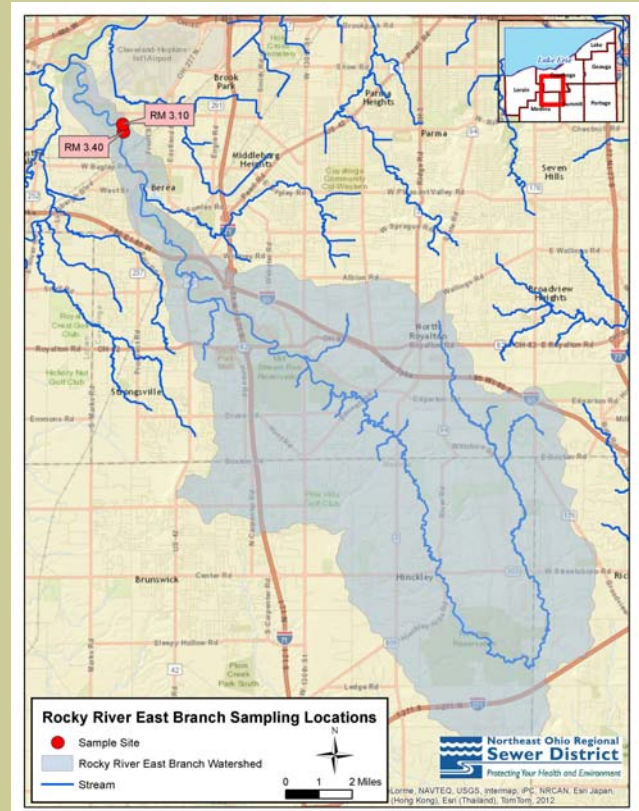


Rocky River East Branch

The Rocky River East Branch has a drainage area of 77 square miles and enters the main branch of the Rocky River north of Berea. In 1993, the Berea Wastewater Treatment Plant (WWTP) was decommissioned, and flows from the plant were redirected to the Northeast Ohio Regional Sewer District's Southerly Wastewater Treatment Center. Environmental monitoring on the Rocky River East Branch was conducted by NEORS D prior to and after decommissioning of the Berea WWTP, to determine the health of the stream and any impacts from the WWTP. Sampling that was completed in 1995 and 2000 indicated some slight improvements in the fish and macroinvertebrate communities at both sites.

In 2012, NEORS D conducted additional sampling to determine any further improvements that had taken place as a result of the WWTP decommissioning. Below are links to study plan and report detailing the work that was completed along with fish and macroinvertebrate taxa lists, habitat evaluation sheets and analysis results for water chemistry sampling.



[Click for map of sampling locations](#)

Rocky River East Branch Reports and Data

2012	Study Plan	Report	Water Chemistry	Fish	Macroinvertebrates	Habitat
------	------------	--------	-----------------	------	--------------------	---------



Upstream of Valley Parkway