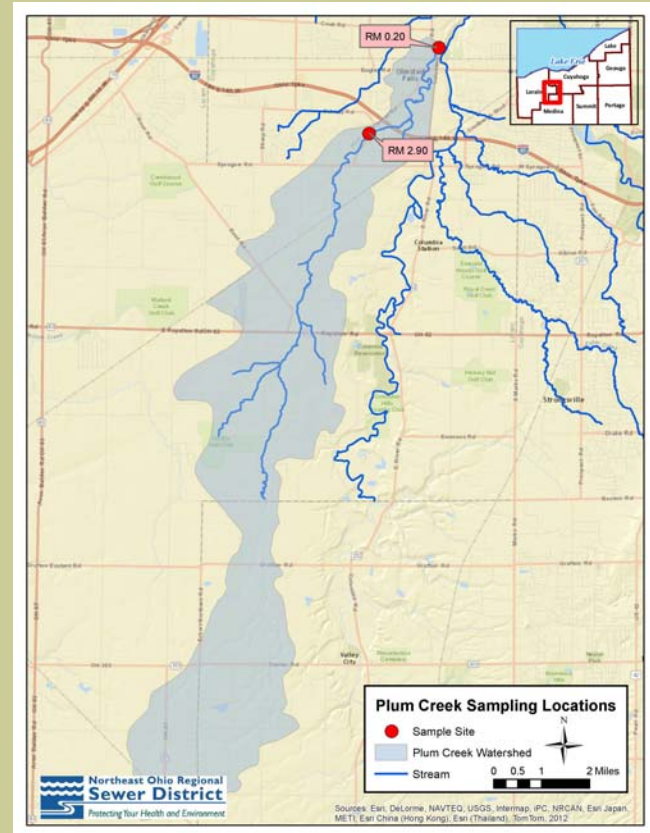


Plum Creek

Plum Creek is tributary to the Rocky River West Branch. In the mid-1990s, the Northeast Ohio Regional Sewer District completed the Olmsted Falls Connector Interceptor. Following the completion of the interceptor, the Western Ohio Utility Co., Inc. and Brentwood Subdivision wastewater treatment plants (WWTPs) were decommissioned on November 1, 1997.

Prior to the closure of the two wastewater treatment facilities, the Ohio Environmental Protection Agency (EPA) surveyed the area in 1996 and found that Plum Creek did not meet the warmwater habitat designated use based on the biological communities. In 2012, NEORSRD conducted water chemistry sampling, habitat assessments, and fish and benthic macroinvertebrate community surveys on Plum Creek to determine any improvements to the stream that had occurred since the treatment plants were decommissioned.

Below are links to the study plan and report that details the work that was completed along with fish and macroinvertebrate taxa lists, habitat evaluation sheets and analysis results for water chemistry sampling.



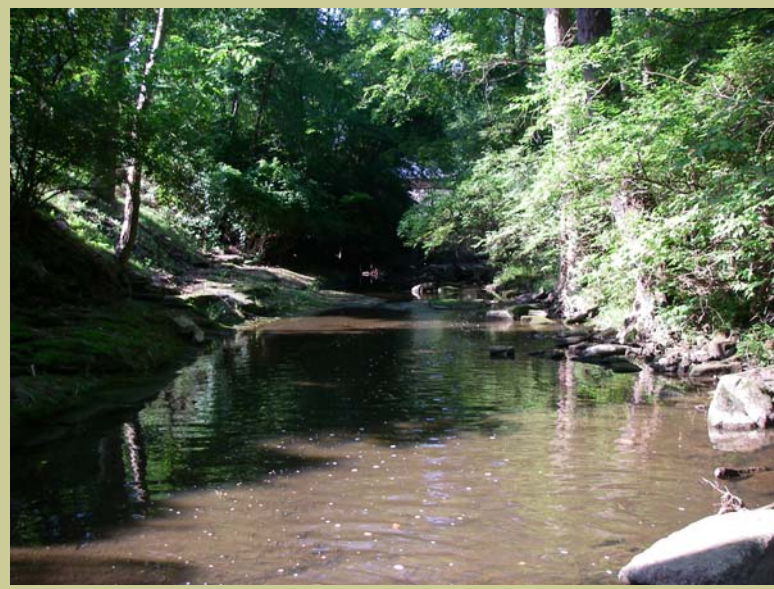
[Click for map of sampling locations](#)

Plum Creek Reports and Data

2012	Study Plan	Report	Water Chemistry	Fish	Macroinvertebrates	Habitat
------	------------	--------	-----------------	------	--------------------	---------



Installing a Hester-Dendy Artificial Substrate Sampler



Upstream of Main Street