

## *2018 Euclid Creek Environmental Monitoring*

### (1) Objectives

Euclid Creek, a tributary to Lake Erie, is a relatively urbanized stream located in parts of Cuyahoga and Lake Counties, Ohio. In 2018, the Northeast Ohio Regional Sewer District (NEORS) intends to conduct stream monitoring activities on the main branch of Euclid Creek.

The study objective at river miles (RMs) 0.55, and 1.65, on the main branch of Euclid Creek, will be to assess the attainment status of the stream segments. Stream monitoring at these sites will include fish community surveys, macroinvertebrate community surveys, habitat assessments, and water chemistry sampling. This sampling will be conducted by the NEORS's Environmental Assessment group in the Water Quality and Industrial Surveillance (WQIS) Division and will occur from June 15 through September 30, 2018 (through October 15 for fish sampling assessments), as required in the Ohio EPA Biological Criteria for the Protection of Aquatic Life Volume III (1987b)<sup>1</sup>. The sites at RMs 0.55 and 1.65 are required under the Ohio Environmental Protection Agency (Ohio EPA) National Pollution Discharge Elimination System (NPDES) Permit No. 3PA00002\*HD.

An additional objective will be to collect pre- and post-construction monitoring data of three NEORS Project Clean Lake capital improvement projects that are expected to reduce the amount of CSO discharges entering Euclid Creek, from over 60 to less than 2 events per year. The Euclid Creek Pump Station Project is complete, as well as the Euclid Creek Tunnel. However, the Easterly Tunnel Dewatering Pump Station is not ready for flow from these CSO points. This deep pump station is currently being tested with clean water and will be introduced with CSO flows later this summer to finish testing. It is expected that these projects will be brought online later this year.

Post-construction monitoring will continue to be conducted at RM 0.40 where the wetland restoration work was completed five years ago. The Wildwood Stream and Wetland Restoration Project began in July 2012 and was completed in January 2013. The purpose of the project was to restore coastal and lacustrine wetlands, increase fish habitat and increase overall ecological function in the lower Euclid Creek. In 2018, stream monitoring at RM 0.40 will include fish community surveys, macroinvertebrate community surveys, habitat assessments, and water chemistry sampling. Results from post-monitoring will determine what effect, if any, the restoration had on the chemical, biological, and physical characteristics of the creek.

---

<sup>1</sup> See Appendix H for a list of references.

Stream monitoring activities will be conducted at each site by NEORSD Level 3 Qualified Data Collectors certified by Ohio EPA in Fish Community Biology, Benthic Macroinvertebrate Biology, Chemical Water Quality, and Stream Habitat Assessment. Fish and macroinvertebrate community health will be evaluated through the use of Ohio EPA's Index of Biotic Integrity (IBI), Modified Index of Well-Being (MIwb), and Invertebrate Community Index (ICI). An examination of the specific characteristics of the biological communities will be used in conjunction with water quality data, the NEORSD Macroinvertebrate Field Sheet, and Qualitative Habitat Evaluation Index (QHEI) results to identify impacts to the communities. Results will be compared to historic data to show temporal as well as spatial trends. Water chemistry data will also be compared to the Ohio Water Quality Standards to determine attainment of applicable uses (Ohio EPA, 2017). In addition, chlorophyll *a* levels in the creek may be measured at one location in the vicinity of a long-term data sonde station. The data sonde along with chlorophyll *a* results will provide a more comprehensive understanding of the relationship among algal production, nutrient levels, and dissolved oxygen diel swings in the creek. The data sonde is located on the downstream side of the Lakeshore Boulevard bridge in Cleveland, OH (Lat: 41.5822, Lon: -81.5590). This location is approximately 150 meters upstream of the site at RM 0.55.

(2) Point/Nonpoint Sources

Point Sources	Nonpoint Sources
Combined Sewer Overflows	Urban Runoff
Storm Sewer Outfalls	Landfills
Sanitary Sewer Overflows	Spills
Home Septic Systems	Agriculture
NPDES Permitted Locations	

The map presented in Section 6 shows point sources that may be influencing the water quality at each sample location. These sources, along with the nonpoint sources listed in the table above, may be impacting the health of the fish and benthic macroinvertebrate communities in Euclid Creek. Other factors that may influence ecological conditions during the study include periods of drought or precipitation.

(6) Sampling Locations

The following sample locations will be surveyed on Euclid Creek during the 2018 field season. Benthic macroinvertebrate and water chemistry collection sites are located near the midpoint of each electrofishing zone, indicated by RM. For the site at RM 0.40, macroinvertebrates will also be collected from the wetland area to determine any specific changes that have taken place there. GPS coordinates are recorded at the downstream end of each electrofishing zone.

2018 Euclid Creek Environmental Monitoring  
 April 3, 2018

Water Body	Latitude	Longitude	River Mile	Location Information	USGS HUC 8 Number Name	Purpose
Euclid Creek, Main Branch	41.5741	-81.5467	1.65	Upstream of Saint Clair Avenue	04110003 Ashtabula-Chagrin	Evaluate water chemistry, habitat, fish & macroinvertebrates in support of Ohio EPA Permit No. 3PA00002*HD
Euclid Creek, Main Branch	41.5833	-81.5594	0.55	Downstream of Lake Shore Boulevard	04110003 Ashtabula-Chagrin	Evaluate water chemistry, habitat, fish & macroinvertebrates in support of Ohio EPA Permit No. 3PA00002*HD
Euclid Creek, Main Branch	41.5857	-81.5622	0.40	Upstream of Villa Angela Drive bridge	04110003 Ashtabula-Chagrin	Evaluate water chemistry, fish, macroinvertebrates, and habitat post-restoration.



Euclid Creek Study Plan

Overview Map

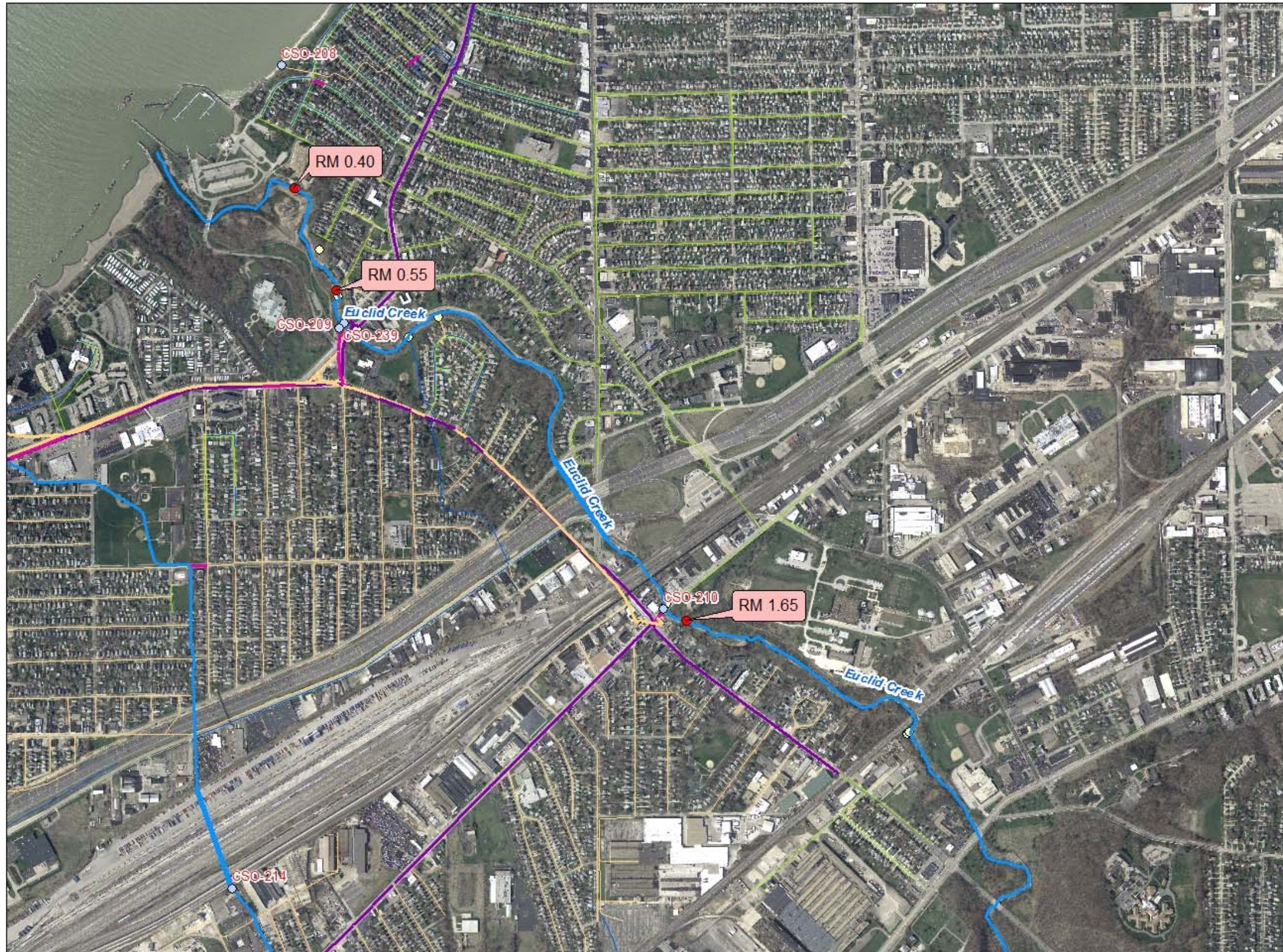


Legend

- Monitoring Site
- Regional Drainage
- CSO Outfall
- District Facility
- Outfalls
- NEORS CSO Combined Sewer
- NEORS CSO Responsibility Sewer
- NEORS Intercommunity Relief Sewer
- NEORS INTERCEPTOR
- Local Combined Sewer
- Local Culverted Stream
- Local Sanitary Sewer
- Local Storm Sewer



0.15  
Miles



This information is for display purposes only. The Northeast Ohio Regional Sewer District (NEORS) makes no warranties, expressed or implied, with respect to the accuracy of and the use of this map for any specific purpose. This map was created to serve as base information for use in Geographic Information Systems (GIS) for a variety of planning and analysis purposes. The NEORS expressly disclaims any liability that may result from the use of this map. For more information, please contact: NEORS GIS Services, 3900 Euclid Avenue, Cleveland, Ohio 44115 --- (216) 881-6600 --- GIS@neorsd.org

## 2018 Project Study Plans

### (3) Parameters Covered

Fish specimens will be identified to species level, weighed, counted and examined for the presence of external anomalies including DELTs (deformities, eroded fins, lesions and tumors). An Ohio EPA Fish Data Sheet (Appendix A) will be completed during each assessment. Quantitative fish sampling is expected to be conducted at all locations.

Macroinvertebrate community assemblages will be collected from each location. An external Level 3 Qualified Data Collector for Benthic Macroinvertebrate Biology Identification will identify and enumerate the specimens collected from each site<sup>1</sup>. All specimens will be identified to the lowest practical taxonomic level as recommended in Ohio EPA's *Biological Criteria for the Protection of Aquatic Life, Volume III* (1987b)<sup>2</sup>. The NEORSD Macroinvertebrate Field Sheet (Appendix A) will be completed at each site during sample retrieval or when qualitative sampling is conducted.

Stream habitat will be measured by scoring components of the QHEI at all locations, including the substrate, instream cover, channel morphology, riparian zone, bank erosion, pool/glide and riffle/run quality and gradient. The Lacustrary QHEI (L-QHEI) will be performed at sites that are affected by the water level of Lake Erie. Examples of the Ohio EPA field sheets for the QHEI and the L-QHEI can be found in Appendix A.

Water chemistry samples will be collected at each electrofishing/ macroinvertebrate sampling site included in the study. Water chemistry samples will be analyzed by NEORSD's Analytical Services Division. Appendix B lists the parameters to be tested along with the detection limits and practical quantitation limits. Field measurements for dissolved oxygen, pH, temperature, conductivity and turbidity will also be performed. A Surface Water Condition Sampling Field Data Form will be completed at each site during each sampling event (Appendix A).

Benthic and water column chlorophyll *a* samples may be collected from stream locations. Chemical and physical water quality parameters to be measured in conjunction with the chlorophyll *a* samples include total phosphorus, dissolved reactive phosphorus, nitrite, nitrate+nitrite, ammonia, alkalinity, turbidity and suspended solids. In the Cuyahoga River, YSI 6600EDS, or EXO2 data sondes may

---

<sup>1</sup> The contractor responsible for doing this work as not been identified yet. Once this contract is awarded, their contact information will be submitted.

<sup>2</sup>See Appendix H for a list of all references.

be installed at RMs 16.20, 10.75, 10.10, and 7.00 around the time that this sampling is conducted to more frequently monitor dissolved oxygen, temperature, conductivity, specific conductivity and pH.

(4) Field Collection and Data Assessment Techniques

Field collections for fish will be conducted at all stream locations. Sampling will be conducted using longline, tote barge, backpack, or boat electrofishing techniques and will consist of shocking all habitat types within a sampling zone. Headwater and wading sites, which are 0.15 and 0.20 kilometers in length, respectively, will be surveyed by moving from downstream to upstream. Boat sites, which are 0.50 kilometers in length, will be surveyed by moving from upstream to downstream. The stunned fish will be collected and placed into a live well for later identification. The longline, tote barge, backpack, and boat electrofishing zones will be assessed one to three times during the field season (June 15 - October 15).

Fish will be identified to the species level, weighed, counted, and examined for the presence of external anomalies including DELTs. Fish easily identified (commonly collected from year to year) will be returned to the site from which they are collected. Fish species difficult to identify will be brought back to the laboratory for verification by NEORS Level 3 Fish Qualified Data Collectors (QDC). If necessary, vouchers will be sent to The Ohio State University Museum of Biological Diversity for verification by the Curator and/or Associate Curator of Fish. Voucher specimens will be collected as described in section (14). Endangered species and those too large for preservation will not be collected as voucher specimens, but will instead be photographed. Photographed vouchers will include features that permit definitive identification of the particular species.

Fish will be preserved in 10 percent formalin in the field, soaked in tap water for 24 to 48 hours after 5 to 7 days, then transferred to solutions of 30 and 50 percent ethanol for 5 to 7 days each and, finally, to 70 percent ethanol for long-term storage. Specimens larger than six inches will be slit along the right side and then soaked in formalin for approximately 10 to 14 days before being transferred to water and solutions of 30, 50 and 70 percent ethanol. Label information will include location (description and coordinates), date, time, collectors' names and sample identification code for each specimen collected.

Macroinvertebrate sampling will be conducted using quantitative and qualitative sampling techniques. Quantitative sampling will be done using a modified Hester-Dendy multi-plate artificial substrate sampler (HD) that is colonized for a six-week period. Multiple HD samplers may be installed at one or all sampling locations in case samplers are lost due to vandalism, burial, etc. or for the purposes of providing a replicate sample. Qualitative sampling will be conducted using a D-frame dip net

when HD samplers are retrieved. The NEORSD Macroinvertebrate Field Sheet will be completed during each HD retrieval. NEORSD Level 3 QDCs for Benthic Macroinvertebrate Biology Identification may identify specimens in replicate samples to the lowest practical taxonomic level as recommended in Ohio EPA's *Biological Criteria for the Protection of Aquatic Life, Volume III* (1987b).

Macroinvertebrate voucher specimens for both quantitative and qualitative sampling will be collected as described in section (14). Macroinvertebrate community assemblages collected will be shipped to an external Level 3 Qualified Data Collector for Benthic Macroinvertebrate Biology Identification for identification and enumeration. The Level 3 QDC will identify specimens to the lowest practical taxonomic level as recommended in Ohio EPA's *Biological Criteria for the Protection of Aquatic Life, Volume III* (1987b).

A detailed description of the sampling and analysis methods utilized in the fish community and macroinvertebrate surveys, including calculations of the IBI, MIwb, and ICI, can be found in Ohio EPA's *Biological Criteria for the Protection of Aquatic Life, Volumes II* (1987a) and *III* (1987b). Methods for assessing fish and macroinvertebrate communities in lacustrary zones can be found in Ohio EPA's draft *Biological Criteria for the Protection of Aquatic Life, Volume IV* (1997).

The QHEI, as described in Ohio EPA's *Methods for Assessing Habitat in Flowing Waters: Using the Qualitative Habitat Evaluation Index (QHEI)* (2006) will be used to assess aquatic habitat conditions at each sample location. The L-QHEI will be used where appropriate and will follow Ohio EPA's *Methods of Assessing Habitat in Lake Erie Shoreline Waters Using the Qualitative Habitat Evaluation Index (QHEI) Approach (Version 2.1)* (2010).

Water chemistry sampling may occur across a variety of flow conditions. Techniques used for water chemistry sampling and chemical analyses will follow the *Surface Water Field Sampling Manual* (Ohio EPA, 2015a). Chemical water quality samples from each site will be collected with at least one 4-liter disposable polyethylene cubitainers with disposable polypropylene lids and two 473-mL plastic bottles. Water samples collected for analysis of dissolved reactive phosphorus will be filtered using a 0.45- $\mu$ m PVDF syringe filter and will be collected in a 125-mL plastic bottle. Bacteriological samples will be collected in a sterile plastic bottle preserved with sodium thiosulfate. All water quality samples will be collected as grab samples. Field blanks and duplicate samples will each comprise not less than 5% of the total samples collected for this study plan, for a total frequency of quality control samples of not less than 10% of the total samples collected. With the exception of bacteriological duplicate samples, the acceptable percent RPD will be based on the ratio of the sample concentration and detection limit (Ohio EPA, 2015a): Acceptable % RPD =  $[(0.9465X^{-0.344}) * 100] + 5$ , where X

= sample/detection limit ratio. For bacteriological duplicates, duplicate samples more than 5x apart from one another (%RPD > 133.3%) will be rejected in accordance with the Ohio EPA approved method for data validation of bacteriological samples outlined in Section F of the *Ohio 2012 Integrated Water Quality Monitoring and Assessment Report* (Ohio EPA, 2012). Those RPDs that were higher than acceptable may indicate potential problems with sample collection and, as a result, the data will not be used for comparison to the water quality standards. Acid preservation of the samples, as specified in the NEORS D laboratory's standard operating procedure for each parameter, will occur in the field. Appendix B lists the analytical method, method detection limit and practical quantitation limit for each parameter analyzed. Field analyses include the use of either a YSI EXO1 sonde, or YSI 600XL sonde to measure dissolved oxygen (DO), water temperature, conductivity and pH; and when necessary, a Hanna HI 98129 meter to measure pH and a Hach HQ30d meter with LDO101 probe to measure DO. Field turbidity will be measured using a Hach 2100Q Turbidimeter. Specifications for these meters have been included in Appendix C.

Benthic and water column chlorophyll *a* samples may be collected if time and resources allow. Sampling methods will follow those detailed in the NEORS D *Chlorophyll a Sampling and Field Filtering Standard Operating Procedure* (SOP-EA001-00). A Chlorophyll *a* Sampling Field Sheet will be completed for each site (Appendix D). Water chemistry grab samples will be collected at the same time using the methods discussed previously and will be analyzed for nutrients, turbidity, alkalinity and suspended solids. Additionally in the Cuyahoga River, approximately 24-hours prior to each chlorophyll *a* sampling event, YSI 6600 EDS, or EXO2 data sondes may be deployed at RMs 16.20, 10.75, 10.10 and 7.00. If installed, each data sonde will record, at fifteen-minute intervals, dissolved oxygen concentration, pH, temperature, and conductivity from the time the data sonde is deployed until the time it is retrieved. These data sondes will be placed in the stream by inserting each one into a 4.5-inch PVC pipe with holes drilled into the sides of the lower third of the pipe to allow water to pass through it. The data sondes will remain in the river for approximately 24-hours or longer following collection of the chlorophyll *a* samples.

Where possible, data assessment will include an analysis of temporal and spatial trends in the collected data. Species assemblages and individual metrics will be analyzed. Graphs that show current and historic QHEI, L-QHEI, IBI, LIBI, MIwb, ICI, and LIC I scores and how these scores compare to attainment status of biocriteria will be prepared. Water chemistry data collected will be compared to Ohio water quality standards to determine whether any excursions from the applicable water quality criteria have occurred. It will also be used to determine any relationships among individual parameters and chlorophyll *a* concentrations.



Comparisons between water quality and biological community health will only be made if at least three water quality samples have been collected from that site.

(5) Stream Flow Measurement

Stream flow will be recorded for all locations during each electrofishing pass utilizing data from the United States Geological Survey (USGS) gauge station nearest the stream location, if applicable.

Stream flow will be measured with a Marsh-McBirney FloMate Model 2000 Portable Flow Meter, a HACH FH950 Flow Meter or an Aquaflow Probe Model 6900, which measure flow in feet per second, when HD samplers are installed and retrieved. The specifications for the flow meters can be found in Appendix C.

(7) Schedule

One to three electrofishing surveys will be conducted at each site between June 15 and October 15, 2018. Surveys will be conducted at least three weeks apart. Specific dates have not been scheduled. River flow and weather conditions will be assessed weekly to determine when each electrofishing pass will be conducted.

Artificial substrate samplers will be installed at stream locations between June 15 and August 19, 2018, and retrieved six weeks later. Qualitative macroinvertebrate sampling will be conducted one time at all sites. Specific dates have not been scheduled. River flow and weather conditions will be assessed weekly to determine when the HD sampler installations and retrievals and qualitative sampling will be conducted.

QHEI, and, if necessary, L-QHEI habitat evaluations will be conducted one time between June 15 and October 15, 2018. QHEI evaluations will be conducted around the same time as one of the electrofishing surveys.

Water chemistry samples will be collected a minimum of three times from stream locations between June 15 and October 15, 2018.

Benthic and water column chlorophyll *a* samples may be collected at least one time from stream locations between June 15 and October 15, 2018. These samples will be collected under low-flow conditions.

(8) QA/QC

Quality assurance and quality control of sampling and analysis methods for habitat, fish, and macroinvertebrate evaluations will follow Ohio EPA's *Biological Criteria*

*for the Protection of Aquatic Life, Volumes II (1987a) and III (1987b), Methods for Assessing Habitat in Flowing Waters: Using the Qualitative Habitat Evaluation Index (QHEI) (2006), draft Biological Criteria for the Protection of Aquatic Life: Volume IV: Fish and Macroinvertebrate Indices for Ohio's Lake Erie Nearshore Waters, Harbors, and Lacustraries (1997) and Methods of Assessing Habitat in Lake Erie Shoreline Waters Using the Qualitative Habitat Evaluation Index (QHEI) Approach (Version 2.1) (2010)*

Electrofishing equipment will be used according to the guidelines listed in the operation and maintenance manual provided by Smith-Root, Inc. Malfunctioning equipment will not be used to collect data. Proper steps will be taken to correct any problems as soon as possible, whether by repairing in the field, at the NEORS D Environmental & Maintenance Services Center, or by contacting the supplier or an appropriate service company.

Fish species difficult to identify will be brought back to the laboratory for verification by Level 3 Fish QDC's, and if necessary, sent to The Ohio State University Museum of Biological Diversity for verification by the Curator and/or Associate Curator of Fish. Voucher specimens will be collected as described in section (14). Endangered species and those too large for preservation will not be collected as voucher specimens, but will instead be photographed. Photographed vouchers will include features that permit definitive identification of the particular species.

All macroinvertebrate community assemblages from stream locations, except for any replicate samples, will be collected and shipped to an external Level 3 Qualified Data Collector for Benthic Macroinvertebrate Biology Identification for identification and enumeration. All specimens will be identified to the lowest practical taxonomic level as recommended in Ohio EPA's *Biological Criteria for the Protection of Aquatic Life, Volume III (1987b)*. All macroinvertebrate specimens will be returned to NEORS D. At least two voucher specimens of each species, when available, will be separated into individual vials and kept as described in section (14). The remaining specimens for each site will be returned in a single container labeled with the site number and collection method and date. All specimens and accompanying chain-of-custody documentation will be retained by NEORS D and stored at the Environmental & Maintenance Services Center for a period not less than ten years.

Water samples obtained for chemical analyses will be collected, preserved (see Section 4), labeled and then placed on ice inside the field truck. The field truck will remain locked at all times when not occupied/visible. Sampling activities, including sample time and condition of surface water sampled, will be entered in a field log book and on the Surface Water Condition Sampling Field Data Form. The samples

will then be delivered immediately to the NEORSD Analytical Services cooler, after which the door to the cooler will be locked, and the samples will be transferred to the custody of Analytical Services. The NEORSD Analytical Services Quality Manual and associated Standard Operating Procedures are on file with Ohio EPA. The Quality Assurance Officer at Analytical Services will send updates, revisions and any information on document control to Ohio EPA as needed.

For benthic and water column chlorophyll *a* sampling, three filtrations will be performed for each sample. A field filtration blank will be submitted for every 20 samples.

Calibration of YSI 600XL, 6600EDS, EXO1, and EXO2 data sondes will be done according to the YSI Environmental Operations Manual. The conductivity will be calibrated first using a 1.413 mS/cm standard. Second, the pH will be calibrated using two different buffers (7 and 10 s.u.). The DO will be calibrated last with an acceptable error of 0.2 mg/L.

Once the 6600EDS or EXO2 sondes are removed from the river following long-term installation, the accuracy of the data that has been collected will be checked by comparing readings taken by the sondes to known standards. If the measurements taken at this time meet quality control goals, all of the data collected since the last calibration will be considered accurate. The acceptable differences for pH and conductivity will be  $\pm 0.3$  with pH 7 buffer and  $\pm 10\%$  of the conductivity standard, respectively (EPA New England- Region 1, 2005). The acceptable difference for DO will be  $\pm 0.2$  mg/L. If the measurements do not meet quality control goals, best professional judgment will be used to decide if any of the data collected during that period may still be accurate. For example, the data collected from the four locations may be plotted on the same graph, and if it appears that the data points are following similar trends, they may be considered accurate. If any data that do not meet quality control goals are used, a rationale for their inclusion will be provided when the data are submitted.

(9) Work Products

Within one year of completion of the project, fish data (species, numbers, weights, pollution tolerances, the incidence of DELT anomalies, IBI or LIBI, MIwb scores), macroinvertebrate data (types and numbers of macroinvertebrates collected and ICI or LICI scores), habitat data (QHEI or L-QHEI raw data and scores) and water chemistry results will be submitted to the Ohio EPA or an Ohio EPA approved data warehouse. Additionally, reports summarizing, interpreting, graphically presenting and discussing the IBI (LIBI, where applicable), MIwb, ICI (LICI, where applicable) and QHEI (L-QHEI, where applicable) scores, chlorophyll *a* results, and any excursions from water quality standards may be prepared for internal use.

(10) Qualified Data Collectors

The following Level 3 Qualified Data Collectors (QDC) will be involved with this study:

Name	Address	Email Address	Phone Number	QDC Specialty(s)
Seth Hothem <sup>1</sup>	4747 East 49 <sup>th</sup> Street Cuyahoga Hts., Ohio 44125	hothems@neorsd.org	216-641-6000	QDC - 00010 CWQA/FCB/SHA/ BMB
Kelsey Amidon	4747 East 49 <sup>th</sup> Street Cuyahoga Hts., Ohio 44125	amidonk@neorsd.org	216-641-6000	QDC – 01091 CWQA
Nya Dreyfuss	4747 East 49 <sup>th</sup> Street Cuyahoga Hts., Ohio 44125	aronn@neorsd.org	216-641-6000	QDC – 01139 BMB
Jillian Knittle	4747 East 49 <sup>th</sup> Street Cuyahoga Hts., Ohio 44125	knittlej@neorsd.org	216-641-6000	QDC – 00512 CWQA/SHA/BMB
Ron Maichle	4747 East 49 <sup>th</sup> Street Cuyahoga Hts., Ohio 44125	maichler@neorsd.org	216-641-6000	QDC - 00145 CWQA/SHA/BMB
Mark Matteson	4747 East 49 <sup>th</sup> Street Cuyahoga Hts., Ohio 44125	mattesonm@neorsd.org	216-641-6000	QDC – 01031 CWQA/FCB/SHA
Denise Phillips	4747 East 49 <sup>th</sup> Street Cuyahoga Hts., Ohio 44125	phillipsd@neorsd.org	216-641-6000	QDC – 01203 CWQA
John Rhoades	4747 East 49 <sup>th</sup> Street Cuyahoga Hts., Ohio 44125	rhoadesj@neorsd.org	216-641-6000	QDC - 00008 CWQA/FCB/SHA/ BMB
Francisco Rivera	4747 East 49 <sup>th</sup> Street Cuyahoga Hts., Ohio 44125	riveraf@neorsd.org	216-641-6000	QDC - 00262 CWQA/SHA
Eric Soehnlén	4747 East 49 <sup>th</sup> Street Cuyahoga Hts., Ohio 44125	soehnlene@neorsd.org	216-641-6000	QDC – 01030 CWQA/SHA/BMB
Nicole Velez	4747 East 49 <sup>th</sup> Street Cuyahoga Hts., Ohio 44125	velezn@neorsd.org	216-641-6000	QDC – 01202 CWQA
Cathy Zamborsky	4747 East 49 <sup>th</sup> Street Cuyahoga Hts., Ohio 44125	zamborskyc@neorsd.org	216-641-6000	QDC - 00009 CWQA/SHA
Jonathan Brauer <sup>2</sup>	4747 East 49 <sup>th</sup> Street Cuyahoga Hts., Ohio 44125	brauerj@neorsd.org	216-641-6000	QDC – 00663 SHA

<sup>1</sup> NEORS Lead Project Manager

<sup>2</sup> See acknowledgement letter for conducting QHEIs (Appendix F)

<sup>3</sup>Benthic Macroinvertebrate Identification

The following is a list of persons not qualified as Level 3 QDCs who may be involved in the project. Prior to the start of sampling, the project managers will explain to each individual the proper methods for sampling. Sampling will only be completed under the direct observation of a QDC. The lead project manager will be responsible for reviewing all reports and data analysis prepared by qualified personnel prior to completion.

PSP Guidelines 3-5 & 7-17  
February 5, 2018

Name	Address	Email Address	Phone Number
Lindsay Baker	4747 East 49 <sup>th</sup> Street Cuyahoga Hts., Ohio 44125	bakerl@neorsd.org	216-641-6000
Nick Barille	4747 East 49 <sup>th</sup> Street Cuyahoga Hts., Ohio 44125	barillen@neorsd.org	216-641-6000
Mark Colvin	4747 East 49 <sup>th</sup> Street Cuyahoga Hts., Ohio 44125	colvinm@neorsd.org	216-641-6000
Rae Grant	4747 East 49 <sup>th</sup> Street Cuyahoga Hts., Ohio 44125	grantr@neorsd.org	216-641-6000
Mario Meany	4747 East 49 <sup>th</sup> Street Cuyahoga Hts., Ohio 44125	meanym@neorsd.org	216-641-6000
Carrie Millward	4747 East 49 <sup>th</sup> Street Cuyahoga Hts., Ohio 44125	millwardc@neorsd.org	216-641-6000
Brandy Reischman	4747 East 49 <sup>th</sup> Street Cuyahoga Hts., Ohio 44125	reischmanb@neorsd.org	216-641-6000
Joseph Schiel	4747 East 49 <sup>th</sup> Street Cuyahoga Hts., Ohio 44125	schielj@neorsd.org	216-641-6000
Frank Schuschu	4747 East 49 <sup>th</sup> Street Cuyahoga Hts., Ohio 44125	schuschuf@neorsd.org	216-641-6000
William Stanford	4747 East 49 <sup>th</sup> Street Cuyahoga Hts., Ohio 44125	standfordw@neorsd.org	216-641-6000
Justin Telep	4747 East 49 <sup>th</sup> Street Cuyahoga Hts., Ohio 44125	telepj@neorsd.org	216-641-6000
Wolfram von Kiparski	4747 East 49 <sup>th</sup> Street Cuyahoga Hts., Ohio 44125	vonkiparskiw@neorsd.org	216-641-6000
Hannah Boesinger	4747 East 49 <sup>th</sup> Street Cuyahoga Hts., Ohio 44125	boesingerh@neors.org	216-641-6000
WQIS Intern	4747 East 49 <sup>th</sup> Street Cuyahoga Hts., Ohio 44125	-	216-641-6000
WQIS Intern	4747 East 49 <sup>th</sup> Street Cuyahoga Hts., Ohio 44125	-	216-641-6000
WQIS Intern	4747 East 49 <sup>th</sup> Street Cuyahoga Hts., Ohio 44125	-	216-641-6000

(11) Contract laboratory contact information

All bacteriological and/or chemical sample analysis will be completed by NEORSD's Analytical Services Division. Evidence of NEORSD's Analytical Services current accreditation and method dates can be found in Appendix E. The contact information for NEORSD's Analytical Service Division is:

NEORSD Analytical Services  
Cheryl Soltis-Muth  
4747 E. 49th Street  
Cuyahoga Heights, Ohio 44056  
soltis-muthc@neorsd.org

216-641-6000

Any fish that is not positively identified in the field, or at NEORSD, will be sent to The Ohio State University Museum of Biological Diversity for verification by the Curator and/or Associate Curator of Fish. Fish will be identified to the species level.

Mr. Marc Kibbey, Associate Curator of Fish  
1315 Kinnear Road, Columbus, Ohio 43212  
[cavender.1@osu.edu](mailto:cavender.1@osu.edu) / [kibbey.3@osu.edu](mailto:kibbey.3@osu.edu)  
614-292-7873

Identification of macroinvertebrates for stream locations will be completed by an external Level 3 Qualified Data Collector for Benthic Macroinvertebrate Biology Identification<sup>3</sup>. Benthic macroinvertebrates will be identified to the lowest practical level as recommended by Ohio EPA (1987b). Contact information for this contractor will be submitted once the contract is awarded.

(12) Copy of ODNR collector's permit

To be submitted once received from ODNR.

(13) Digital Catalog Statement

A digital photo catalog of all sampling locations will be maintained for 10 years and will include photos of the specific sampling location(s), the riparian zone adjacent to the sampling location(s) and the general land use in the immediate vicinity of the sampling location(s).

Print/Signature: Seth Hothem / 

Date: 4/3/18

(14) Voucher Specimen Statement

NEORSD will maintain a benthic macroinvertebrate and fish voucher collection which includes two specimens, or appropriate photo vouchers, of each species or taxa collected during the course of biological sampling from any stream within the NEORSD's service area. When benthic macroinvertebrates from multiple surface waters are collected within the same year and identified by the same QDC, one voucher collection will be created to represent the specimens collected from those streams. When fish specimens from multiple surface waters are collected within the same year, one voucher collection will be created to represent the specimens

---

<sup>3</sup> A letter of acknowledgement of the macroinvertebrate identification responsibilities will be added as an addendum to this study plan, in Appendix F, upon finalization of the macroinvertebrate identification contract.

collected from those streams. A separate collection for each sampling event will not be maintained.

NEORS D will provide specimens or photo vouchers to the Director upon request. This collection will be stored at the NEORS D laboratory in the Environmental and Maintenance Services Center.

Print/Signature: Seth Hothem/  Date: 4/3/18

(15) Sample Location Statement

I attest that I will make available any and all sampling location information, including but not limited to; the name of the water body sampled, sampling location latitude and longitude, sampling location river mile where possible, general location information, the U.S. geological survey HUC 8 number and name, and the purpose for data collection at each sampling location.

Print/Signature: Seth Hothem/  Date: 4/3/18

(16) Additional L3 Data Collector Statement

The Lead Project Manager for all stream locations is approved for all project data types.


Print/Signature: Seth Hothem/  Date: 4/3/18

(17) Trespassing Statement

I have not been convicted or pleaded guilty to a Violation of section 2911.21 of the Revised Code (criminal trespass) or a substantially similar municipal ordinance within the previous five years.

Print/Signature: Seth Hothem/  Date: 4/3/18

Print/Signature: Kelsey Amidon/  Date: 4/3/18

Print/Signature: Nya Dreyfuss/  Date: 4/3/18

PSP Guidelines 3-5 & 7-17  
April 3, 2018

Print/Signature: Jillian Knittle/ 	Date: 4/3/18
Print/Signature: Ron Maichle/ 	Date: 04-03-18
Print/Signature: Mark Matteson/ 	Date: 4/3/18
Print/Signature: Denise Phillips/	Date:
Print/Signature: John Rhoades/ 	Date: 04/03/18
Print/Signature: Francisco Rivera/ 	Date: 4/3/18
Print/Signature: Eric Soehnen/ 	Date: 04/03/18
Print/Signature: Nicole Velez 	Date: 04/03/2018
Print/Signature: Cathy Zamborsky/ 	Date: 4/3/18



## Appendix A



FISH DATA SHEET

Sheet ID For Office Use Only

[Empty box for Sheet ID]

New Station

(requires lat/long & county)

Mix Zone

Page \_\_\_ of \_\_\_

Station ID \_\_\_\_\_ River Code \_\_\_\_\_ RM \_\_\_\_\_ Date \_\_\_\_\_ Time \_\_\_\_\_

Stream \_\_\_\_\_ Location \_\_\_\_\_

Comments \_\_\_\_\_

Lat \_\_\_\_\_ Long \_\_\_\_\_ County \_\_\_\_\_ ALP \_\_\_\_\_ Time Fished \_\_\_\_\_

Crew \_\_\_\_\_ Netter \_\_\_\_\_ Others \_\_\_\_\_ Sampler Type \_\_\_\_\_

Distance \_\_\_\_\_ Flow \_\_\_\_\_ Temp. C \_\_\_\_\_ Secchi \_\_\_\_\_ Source \_\_\_\_\_ Project \_\_\_\_\_

Fins Code	Number Weighed	Total Counted	Total Weight	Weights <u>Counts</u>		DELT ANOMALIES Deformities, Erosions, Lesions, Tumors Multiple DELTs on one fish									
				D	E	L	T	M	*						
1															
V	10x														
2															
V	10x														
3															
V	10x														
4															
V	10x														
5															
V	10x														
6															
V	10x														
7															
V	10x														
8															
V	10x														
9															
V	10x														

\* A-anchor worm; B-black spot; C-licees; F-fungus; N-blind; P-parasites; S-emaciated, W-swirled scales Y-popeye; Z-other



**NEORSD Macroinvertebrate Field Sheet**

Stream: \_\_\_\_\_ River Mile: \_\_\_\_\_ Year: \_\_\_\_\_

Location: \_\_\_\_\_ Project: \_\_\_\_\_

Drainage Area (mi<sup>2</sup>): \_\_\_\_\_ Latitude (°N)/Longitude (°W): \_\_\_\_\_

**Hester-Dendy Deployment Information**

Install Date: \_\_\_\_\_ Crew (QDC Circled): \_\_\_\_\_

Current at HD (fps): \_\_\_\_\_ Depth (cm): \_\_\_\_\_ Pictures Obtained: Yes No

Reinstall Date: \_\_\_\_\_ Crew (QDC Circled): \_\_\_\_\_

Current (fps): \_\_\_\_\_ Depth (cm): \_\_\_\_\_ Reason: \_\_\_\_\_

Reinstall Date: \_\_\_\_\_ Crew (QDC Circled): \_\_\_\_\_

Current (fps): \_\_\_\_\_ Depth (cm): \_\_\_\_\_ Reason: \_\_\_\_\_

**Sampling/Retrieval Information**

Sampling Method: Hester-Dendy Dipnet Surber Core Other: \_\_\_\_\_

Sample ID: HD: \_\_\_\_\_ Qualitative: \_\_\_\_\_ Other: \_\_\_\_\_

Sampling Date: \_\_\_\_\_ Crew (QDC Circled): \_\_\_\_\_

HD Condition- Current (fps): \_\_\_\_\_ Depth (cm): \_\_\_\_\_ Water Temp: \_\_\_\_\_ °F / °C

Number of HD Blocks Obtained: \_\_\_\_\_ Remarks: \_\_\_\_\_

Disturbed: Yes No Comments: \_\_\_\_\_

Debris: Yes No Comments: \_\_\_\_\_

Silt/Solids: None Slight Moderate Heavy

Dipnet- Time Sampled (min): \_\_\_\_\_ X Number of Crew: \_\_\_\_\_ = Total (min): \_\_\_\_\_

Habitats Sampled: Pool Riffle Run Margin Backwater

**River Sampling Conditions**

Flow Condition: Flood Above Normal Normal Low Interstitial Intermittent Dry

Current Velocity: Fast Moderate Slow Non-detect

Channel Morphology: Natural Channelized Channelized (Recovered) Impounded

Bank Erosion: Extensive Moderate Slight None

Riffle Development: Extensive Moderate Sparse Absent

Riffle Quality: Good Fair Poor Embedded: Yes No

Water Clarity: Clear Murky Turbid Other: \_\_\_\_\_

Water Color: None Green Brown Grey Other: \_\_\_\_\_

Canopy over HD: Open 75 % 50 % 25 % Closed

**Comment Section:** \_\_\_\_\_  
\_\_\_\_\_  
\_\_\_\_\_  
\_\_\_\_\_

**OEPA Comment Field Codes:** \_\_\_\_\_

**Samples Analyzed By:** \_\_\_\_\_ QDC #: \_\_\_\_\_ Date: \_\_\_\_\_

**Physical Characteristics**

**Substrate Characteristics**

	Pool Units	Riffle Units	Run Units
Bedrock			
Boulder			
Rubble			
Coarse Gravel			
Fine Gravel			
Sand			
Silt			
Clay/Hardpan			
Detritus			
Peat			
Muck			
Other			
Macrophytes			
Algae			
Artifacts			
Compaction (F,M,S)			
Depth (Avg)			
Width (Avg)			

**Predominant Land Use (Left, Right or Both)**

Forest	Urban	Open Pasture
Shrub	Residential/Park	Closed Pasture
Old Field	Mining/Construction	
Rowcrop	Wetland	
Industrial	Other	

**Predominant Riparian Vegetation**

Left	Right	Type
_____	_____	Large Trees
_____	_____	Small Trees
_____	_____	Shrubs
_____	_____	Grass/Weeds
_____	_____	None

**Margin Habitat**

Margin Quality:	Good	Fair	Poor
Undercut Banks	Root Mats	Tree Roots	
Grass	Water Willow	Woody Debris	
Shallows	Clay/Hardpan	Macrophytes	
Rip Rap	Bulkhead		
Other	_____		

**Biological Characteristics**

Riffle:

Predominant Organism: \_\_\_\_\_  
 Other Common Organisms: \_\_\_\_\_  
 Density: High Moderate Low  
 Diversity: High Moderate Low

Run:

Predominant Organism: \_\_\_\_\_  
 Other Common Organisms: \_\_\_\_\_  
 Density: High Moderate Low  
 Diversity: High Moderate Low

Pool:

Predominant Organism: \_\_\_\_\_  
 Other Common Organisms: \_\_\_\_\_  
 Density: High Moderate Low  
 Diversity: High Moderate Low

Margin:

Predominant Organism: \_\_\_\_\_  
 Other Common Organisms: \_\_\_\_\_  
 Density: High Moderate Low  
 Diversity: High Moderate Low

Other Notable Collections: \_\_\_\_\_

V= Very Abundant; A= Abundant; C= Common; R= Rare

Overall Amount (V= >151; A= 150-101; C= 100-11; R= 10-1)

/	Porifera, Bryozoa
/ /	Turbellaria, Oligochaeta, Hirudinea
/	Isopoda, Amphipoda
/	Decapoda, Hydracarina
	Ephemeroptera
	Baetidae
/ /	Heptageniidae, Leptohephidae, Caenidae
	Other _____
/	Zygoptera, Anisoptera
	Plecoptera
	Hemiptera
/	Megaloptera, Neuroptera
	Trichoptera
	Hydropsychidae
/	Hydroptilidae, Leptoceridae
	Other _____
	Coleoptera
	Elmidae
	Other _____
	Diptera
	Chironomidae
	Other _____
/	Gastropoda, Bivalvia
	Other _____

Field Narrative Rating: E VG G MG F P VP

Stream & Location: \_\_\_\_\_ RM: \_ \_ \_ Date: \_ / \_ / \_

Scorers Full Name & Affiliation: \_\_\_\_\_ Northeast Ohio Regional Sewer District

River Code: - - - STORET #: \_\_\_\_\_ Lat./Long.: \_\_\_\_\_ /8 \_\_\_\_\_ Office verified location [ ]

1] SUBSTRATE Check ONLY Two substrate TYPE BOXES; estimate % or note every type present Check ONE (Or 2 & average)

Substrate assessment section with categories: BEST TYPES, OTHER TYPES, ORIGIN, and QUALITY. Includes checkboxes for various substrate types and a score box for Substrate (Maximum 20).

2] INSTREAM COVER Indicate presence 0 to 3: 0-Absent; 1-Very small amounts or if more common of marginal quality; 2-Moderate amounts, but not of highest quality or in small amounts of highest quality; 3-Highest quality in moderate or greater amounts

Instream Cover assessment section with categories: UNDERCAT BANKS, OVERHANGING VEGETATION, SHALLOWS, ROOTMATS, POOLS, ROOTWADS, BOULDERS, OXBOWS, BACKWATERS, AQUATIC MACROPHYTES, LOGS OR WOODY DEBRIS. Includes checkboxes and a score box for Cover (Maximum 20).

3] CHANNEL MORPHOLOGY Check ONE in each category (Or 2 & average)

Channel Morphology assessment section with categories: SINUOSITY, DEVELOPMENT, CHANNELIZATION, STABILITY. Includes checkboxes and a score box for Channel (Maximum 20).

4] BANK EROSION AND RIPARIAN ZONE Check ONE in each category for EACH BANK (Or 2 per bank & average)

Bank Erosion and Riparian Zone assessment section with categories: EROSION, RIPARIAN WIDTH, FLOOD PLAIN QUALITY, CONSERVATION TILLAGE, URBAN OR INDUSTRIAL, MINING / CONSTRUCTION. Includes checkboxes and a score box for Riparian (Maximum 10).

5] POOL / GLIDE AND RIFFLE / RUN QUALITY

Pool / Glide and Riffle / Run Quality assessment section with categories: MAXIMUM DEPTH, CHANNEL WIDTH, CURRENT VELOCITY. Includes checkboxes and a score box for Pool / Current (Maximum 12).

Indicate for functional riffles; Best areas must be large enough to support a population of riffle-obligate species: Check ONE (Or 2 & average). [ ] NO RIFFLE [metric=0]

Riffle / Run Quality assessment section with categories: RIFFLE DEPTH, RUN DEPTH, RIFFLE / RUN SUBSTRATE, RIFFLE / RUN EMBEDDEDNESS. Includes checkboxes and a score box for Riffle / Run (Maximum 8).

6] GRADIENT (ft/mi) [ ] VERY LOW - LOW [2-4] [ ] MODERATE [6-10] [ ] HIGH - VERY HIGH [10-6] %POOL: [ ] %GLIDE: [ ] %RUN: [ ] %RIFFLE: [ ] Gradient Maximum 10

*A/ SAMPLED REACH*

Check ALL that apply

Comment RE: Reach consistency/ Is reach typical of stream?, Recreation/ Observed - Inferred, Other/ Sampling observations, Concerns, Access directions, etc.

---

---

---

---

---

**METHOD**      **STAGE**

- BOAT      1st -sample pass- 2nd
- WADE       HIGH
- L. LINE     UP
- OTHER       NORMAL
- LOW
- DRY

**DISTANCE**

- 0.5 Km
- 0.2 Km
- 0.15 Km
- 0.12 Km
- OTHER

**CLARITY**

- 1st --sample pass-- 2nd
- < 20 cm
  - 20-<40 cm
  - 40-70 cm
  - > 70 cm/ CTB
  - SECCHI DEPTH

\_\_\_\_\_ meters

**CANOPY**

- > 85%- OPEN
- 55%-<85%
- 30%-<55%
- 10%-<30%
- <10%- CLOSED

- 1st \_\_\_\_\_ cm
- pass
- 2nd \_\_\_\_\_ cm

*C/ RECREATION*

AREA DEPTH

POOL:  >100ft<sup>2</sup>  >3ft

*B/ AESTHETICS*

- NUISANCE ALGAE
- INVASIVE MACROPHYTES
- EXCESS TURBIDITY
- DISCOLORATION
- FOAM / SCUM
- OIL SHEEN
- TRASH / LITTER
- NUISANCE ODOR
- SLUDGE DEPOSITS
- CSOs/SSOs/OUTFALLS

*D/ MAINTENANCE*

- PUBLIC / PRIVATE / BOTH / NA
- ACTIVE / HISTORIC / BOTH / NA
- YOUNG-SUCCESSION-OLD
- SPRAY / SNAG / REMOVED
- MODIFIED / DIPPED OUT / NA
- LEVEED / ONE SIDED
- RELOCATED / CUTOFFS
- MOVING-BEDLOAD-STABLE
- ARMOURED / SLUMPS
- ISLANDS / SCOURED
- IMPOUNDED / DESICCATED
- FLOOD CONTROL / DRAINAGE

Circle some & COMMENT

*E/ ISSUES*

- WWTP / CSO / NPDES / INDUSTRY
- HARDENED / URBAN / DIRT&GRIME
- CONTAMINATED / LANDFILL
- BMPs-CONSTRUCTION-SEDIMENT
- LOGGING / IRRIGATION / COOLING
- BANK / EROSION / SURFACE
- FALSE BANK / MANURE / LAGOON
- WASH H<sub>2</sub>O / TILE / H<sub>2</sub>O TABLE
- ACID / MINE / QUARRY / FLOW
- NATURAL / WETLAND / STAGNANT
- PARK / GOLF / LAWN / HOME
- ATMOSPHERE / DATA PAUCITY

*F/ MEASUREMENTS*

- $\bar{x}$  width
- $\bar{x}$  depth
- max. depth
- $\bar{x}$  bankfull width
- bankfull  $\bar{x}$  depth
- W/D ratio
- bankfull max. depth
- floodprone x<sup>2</sup> width
- entrench. ratio

*Legacy Tree:*

*Stream Drawing:*

# Lake / Lacustrary (Lentic) QHEI Field Sheet



Environmental Protection Agency

QHEI Score:

RIVERCODE \_\_\_\_\_ RIVERMILE \_\_\_\_\_ WATERBODY \_\_\_\_\_ DISTANCE ASSESSED (m): \_\_\_\_\_  
 DATE \_\_\_\_\_ LOCATION \_\_\_\_\_  
 SCORER \_\_\_\_\_ LAT. \_\_\_\_\_ LONG. \_\_\_\_\_ COMMENT \_\_\_\_\_

1) **SUBSTRATE** (Check ONLY Two Substrate TYPE BOXES; Estimate % or note every type present); LAKE: \_\_\_\_\_ LACUSTRARY: \_\_\_\_\_

TYPE	SHORE	BOTTOM	SUBSTRATE ORIGIN	SILT:	SUBSTRATE QUALITY	
<input type="checkbox"/> BLDR/SLABS [7] <input type="checkbox"/> BOULDER [10] <input type="checkbox"/> COBBLE [8] <input type="checkbox"/> GRAVEL [7] <input type="checkbox"/> SAND [6]			Check ONE (or 2 & AVERAGE) <input type="checkbox"/> LIMESTONE [1] <input type="checkbox"/> TILLS [1] <input type="checkbox"/> WETLANDS [1] <input type="checkbox"/> LACUSTRARINE [1] <input type="checkbox"/> SANDSTONE [1] <input type="checkbox"/> RIPRAP [1] <input type="checkbox"/> HARDPAN [0] <input type="checkbox"/> SHALE [1] <input type="checkbox"/> COAL/ORE [-2]	<input type="checkbox"/> SILT HEAVY [-2] <input type="checkbox"/> SILT MODERATE [-1] <input type="checkbox"/> SILT NORMAL [0] <input type="checkbox"/> SILT FREE [1] <input type="checkbox"/> CLAY [-2] <input type="checkbox"/> INDUSTRIAL [-1] <input type="checkbox"/> ORGANIC [1] <input type="checkbox"/> NONE [1]	Substrate <div style="border: 1px solid black; width: 40px; height: 40px; margin: 0 auto;"></div> Max 20	
<input type="checkbox"/> HARDPAN [4] <input type="checkbox"/> BEDROCK [3] <input type="checkbox"/> DETRITUS [3] <input type="checkbox"/> SILT [2] <input type="checkbox"/> MUCK [2]				SILT ORIGIN: <input type="checkbox"/> -5 or More [2] <input type="checkbox"/> -4 or Less [0]		

NOTE: Ignore sludge that originates from point-sources, score on natural substrates

COMMENTS: \_\_\_\_\_

2) **COVER TYPES** TYPE: (Check All That Apply) AMOUNT: (Check ONLY One or check 2 and AVERAGE)

<input type="checkbox"/> OFF-SHORE SAND BARS [4] <input type="checkbox"/> OVERHANGING VEGETATION [1] <input type="checkbox"/> SHALLOWS (ON BEACH) [1] <input type="checkbox"/> ROOTMATS [1]	<input type="checkbox"/> DEEPWATER > 1 M [1] <input type="checkbox"/> ROOTWADS [1] <input type="checkbox"/> BOULDERS [1] <input type="checkbox"/> SAND BEACH [1]	<input type="checkbox"/> WETLAND POOLS [1] <input type="checkbox"/> SUBMERGED AQUATIC VEG. [4] <input type="checkbox"/> LOGS OR WOODY DEBRIS [1] <input type="checkbox"/> GRAVEL BEACH [1]	<input type="checkbox"/> EXTENSIVE > 75% [9] <input type="checkbox"/> MODERATE 25-75% [7] <input type="checkbox"/> SPARSE 5-25% [3] <input type="checkbox"/> NEARLY ABSENT < 5% [1]	Cover <div style="border: 1px solid black; width: 40px; height: 40px; margin: 0 auto;"></div> Max 20
--	---	---	--	---

COMMENTS: \_\_\_\_\_

3) **SHORELINE MORPHOLOGY** (Check ONLY one PER category or check 2 and AVERAGE)

SHORE SINUOSITY	DEVELOPMENT	MODIFICATION	STABILITY	MODIFICATIONS OF SAMPLED SHORELINE
<input type="checkbox"/> HIGH [2] <input type="checkbox"/> MODERATE [4] <input type="checkbox"/> LOW [3] <input type="checkbox"/> NONE [1]	<input type="checkbox"/> EXCELLENT [6] <input type="checkbox"/> GOOD [5] <input type="checkbox"/> FAIR [3] <input type="checkbox"/> POOR [1]	<input type="checkbox"/> NONE [7] <input type="checkbox"/> RECOVERED [5] <input type="checkbox"/> RECOVERING [3] <input type="checkbox"/> RECENT OR NO RECOVERY [1]	<input type="checkbox"/> HIGH [3] <input type="checkbox"/> MODERATE [2] <input type="checkbox"/> LOW [1]	<input type="checkbox"/> CEMENTED [-1] <input type="checkbox"/> RIP RAPPED [1] <input type="checkbox"/> RAILROAD TIES [-1] <input type="checkbox"/> DREDGED [-1] <input type="checkbox"/> TWO SIDE CHANNEL MODIFICATIONS [-1] <input type="checkbox"/> SHIP CHANNEL [-2]
<b>SHORE to BOTTOM SLOPE MORPHOLOGIES</b> <input type="checkbox"/> SLOPE < 15 deg. [0] <input type="checkbox"/> SLOPE > 45 deg. [2] <input type="checkbox"/> SLOPE < 25 deg. [1] <input type="checkbox"/> SLOPE 90 deg. [0] <input type="checkbox"/> SLOPE > 25 deg. [3]		<b>AVERAGE DEPTH (of 5 measures)</b> <input type="checkbox"/> < 50 cm [0] <input type="checkbox"/> > 400 - 500 cm [4] <input type="checkbox"/> 50 - < 100 cm [1] <input type="checkbox"/> > 500 - 900 cm [2] <input type="checkbox"/> ≥ 100 - 200 cm [2] <input type="checkbox"/> > 900 cm [1] <input type="checkbox"/> > 200 - 4 00 cm [3]		Shore Line <div style="border: 1px solid black; width: 40px; height: 40px; margin: 0 auto;"></div> Max 20

COMMENTS: \_\_\_\_\_

4) **RIPARIAN ZONE AND BANK EROSION** (Check ONE box PER bank or 2 and AVERAGE)

★ Shore Right Looking East or South on Lake ★  
 ★ Shore Right Looking Toward Lake in Lacustrary ★

RIPARIAN WIDTH	SHORE LINE QUALITY (PAST 100 FOOT RIPARIAN)	BANK EROSION	
L R (Per Bank) <input type="checkbox"/> WIDE > 50 m [4] <input type="checkbox"/> MODERATE 10-50 m [3] <input type="checkbox"/> NARROW 5-10 m [2] <input type="checkbox"/> VERY NARROW < 5 m [1] <input type="checkbox"/> NONE [0]	L R (Most Predominant Per Bank) <input type="checkbox"/> FOREST, WETLAND, LAKE [3] <input type="checkbox"/> SHRUB OR OLD FIELD [2] <input type="checkbox"/> VINEYARD, ORCHARD [2] <input type="checkbox"/> FENCED PASTURE [1] <input type="checkbox"/> RESIDENTIAL, PARK, NEW FIELD [1]	L R <input type="checkbox"/> CONSERVATION TILLIAGE [1] <input type="checkbox"/> URBAN OR INDUSTRIAL [0] <input type="checkbox"/> OPEN PASTURE, ROWCROP [0] <input type="checkbox"/> MINING CONSTRUCTION [0] <input type="checkbox"/> DIKED WETLAND [0]	L R (Per Bank) <input type="checkbox"/> NONE/LITTLE [3] <input type="checkbox"/> MODERATE [-1] <input type="checkbox"/> HEAVY/SEVERE [-3]
Riparian <div style="border: 1px solid black; width: 40px; height: 40px; margin: 0 auto;"></div> Max 10			

COMMENTS: \_\_\_\_\_

5) **AQUATIC VEGETATION QUALITY: PLANT SPECIES OBSERVED** (Sum All Scores)

(Score all for observed abundance: ABUNDANT = [3]; COMMON = [5]; FEW = [1]; UNCOMMON = [0]) \_\_\_\_\_ NO AQUATIC VEGETATION = 0



<input type="checkbox"/> Pond Lilies (NYMPHAEA) <input type="checkbox"/> Pond Weed (POTAMOGETON)	<input type="checkbox"/> Sedge (CYPERACEAE) <input type="checkbox"/> Bulrush (SCIRPUS)	<input type="checkbox"/> Wild Celery (VALLISNERIA) <input type="checkbox"/> Waterweed (ELODEA)	<input type="checkbox"/> Wild Rice (ZIZANIA)	Vegetation <div style="border: 1px solid black; width: 40px; height: 40px; margin: 0 auto;"></div> Max 30
(Score all for observed abundance: ABUNDANT = [-2]; COMMON = [-1]; FEW = [0]) <input type="checkbox"/> Purple Loosestrife <input type="checkbox"/> Reed Grass <input type="checkbox"/> Eurasian Milfoil <input type="checkbox"/> Cattails <input type="checkbox"/> Algae (mats) <input type="checkbox"/> Algae (planktonic)				

COMMENTS: \_\_\_\_\_



Is the Sampling Reach Representative of Area Habitat? (Y/N) \_\_\_\_ If Not, Explain: \_\_\_\_\_

Depth measures: \_\_\_\_\_  
Zebra Mussel/Quagga Mussel Coverage  >60%  60-25%  25-10%  <10-1%  1-0%

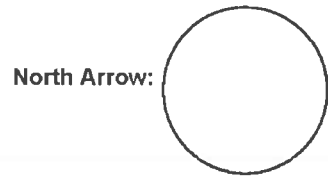
	Gear	Distance	Water Clarity	Wave Height		
First Sampling Pass:	_____	_____	_____	_____		
Second Sampling Pass:	_____	_____	_____	_____		
Third Sampling Pass:	_____	_____	_____	_____		

Subjective Rating (1-10)      Aesthetic Rating (1-10)

Photos: \_\_\_\_\_

WATERBODY MEASUREMENTS:      AVERAGE WIDTH: \_\_\_\_\_      AVERAGE DEPTH: \_\_\_\_\_      Maximum Depth: \_\_\_\_\_

**DRAWING OF SITE:**



## NEORSD Surface Water Condition Sampling Field Data Form

Stream: \_\_\_\_\_ Date: \_\_\_\_\_ Collectors: \_\_\_\_\_

Gage Station and ID: \_\_\_\_\_ Daily Mean Discharge: \_\_\_\_\_ ft<sup>3</sup>/sec

Was this sample taken during or following a wet weather event? YES / NO

Water Quality Meters Used: \_\_\_\_\_

Time (hrs): \_\_\_\_\_ River Mile (Site): \_\_\_\_\_

Weather: Clear Partly Cloudy Overcast Light Rain/Showers Heavy Rain  
Steady Rain Heavy Snow Melt Other: \_\_\_\_\_

Flow: Dry Intermittent Minimal Baseline/Normal Elevated Flood

HD Status: OK Other: \_\_\_\_\_

Color: Clear Muddy Tea Milky Other: \_\_\_\_\_

Odor: Normal Petroleum Anaerobic Sewage Chemical Other: \_\_\_\_\_

Surface Coating: None Foam Oily Scum Other: \_\_\_\_\_

Field Parameters: Conductivity (µmhos/cm): \_\_\_\_\_ Sp. Cond. (µmhos/cm): \_\_\_\_\_

Dissolved Oxygen (mg/L): \_\_\_\_\_ D.O. (%): \_\_\_\_\_

Temperature (°C): \_\_\_\_\_ pH (s.u.): \_\_\_\_\_

Turbidity 1 (NTU): \_\_\_\_\_ Turbidity 2 (NTU): \_\_\_\_\_ Average (NTU): \_\_\_\_\_

General Comments: \_\_\_\_\_

Sample ID: \_\_\_\_\_

Reporting sig figs: (Cond and DO% - 1) (pH, DO mg/L, and Chlor/BGA-PC - 0.1) (Temp- 0.01)

Time (hrs): \_\_\_\_\_ River Mile (Site): \_\_\_\_\_

Weather: Clear Partly Cloudy Overcast Light Rain/Showers Heavy Rain  
Steady Rain Heavy Snow Melt Other: \_\_\_\_\_

Flow: Dry Intermittent Minimal Baseline/Normal Elevated Flood

HD Status: OK Other: \_\_\_\_\_

Color: Clear Muddy Tea Milky Other: \_\_\_\_\_

Odor: Normal Petroleum Anaerobic Sewage Chemical Other: \_\_\_\_\_

Surface Coating: None Foam Oily Scum Other: \_\_\_\_\_

Field Parameters: Conductivity (µmhos/cm): \_\_\_\_\_ Sp. Cond. (µmhos/cm): \_\_\_\_\_

Dissolved Oxygen (mg/L): \_\_\_\_\_ D.O. (%): \_\_\_\_\_

Temperature (°C): \_\_\_\_\_ pH (s.u.): \_\_\_\_\_

Turbidity 1 (NTU): \_\_\_\_\_ Turbidity 2 (NTU): \_\_\_\_\_ Average (NTU): \_\_\_\_\_

General Comments: \_\_\_\_\_

Sample ID: \_\_\_\_\_

## Appendix B

Parameter	Additional Name	Test	Unit	2017 Minimum Detection Limit	2017 Practical Quantitation Limit
Alkalinity	Alkalinity	EPA 310.2	mg/L	4.36	10.0
Mercury	Hg	EPA 245.1	µg/L	0.025	0.050
Ammonia <sup>1</sup>	NH <sub>3</sub>	EPA 350.1	mg/L	0.010	0.020
Nitrite	NO <sub>2</sub>	SM 4500 NO <sub>2</sub> -B <sup>2</sup>	mg/L	0.005	0.020
Nitrite + Nitrate	NO <sub>2</sub> + NO <sub>3</sub>	EPA 353.2	mg/L	0.010	0.020
Total Kjeldahl Nitrogen	TKN	EPA 351.2	mg/L	0.237	0.500
Dissolved Reactive Phosphorus	DRP	EPA 365.1	mg/L	0.003	10.0000
Low Level Dissolved Reactive Phosphorus	LLDRP	EPA 365.1	µg/L	1.06	2.5
Total Phosphorus	Total-P	EPA 365.1	mg/L	0.002	0.010
Chloride	Chloride by IC	EPA 300.0	mg/L	2.500	5.000
Sulfate	Sulfate by IC	EPA 300.0	mg/L	2.500	5.000
Silver	Ag	EPA 200.8	µg/L	0.127	0.500
Aluminum	Al	EPA 200.8	µg/L	2.500	5.000
Arsenic	As	EPA 200.8	µg/L	0.582	2.000
Barium	Ba	EPA 200.8	µg/L	0.134	0.500
Beryllium	Be	EPA 200.8	µg/L	0.094	0.500
Calcium	Ca	EPA 200.8	µg/L	28.216	125.000
Cadmium	Cd	EPA 200.8	µg/L	0.053	0.500
Cobalt	Co	EPA 200.8	µg/L	0.036	0.500
Chromium	Cr	EPA 200.8	µg/L	0.477	1.000
Copper	Cu	EPA 200.8	µg/L	0.110	1.000
Iron	Fe	EPA 200.8	µg/L	2.104	5.000
Potassium	K	EPA 200.8	µg/L	53.799	250.000
Magnesium	Mg	EPA 200.8	µg/L	12.053	125.000
Manganese	Mn	EPA 200.8	µg/L	0.127	1.000
Molybdenum	Mo	EPA 200.8	µg/L	0.119	0.500
Sodium	Na	EPA 200.8	µg/L	21.836	250.000
Nickel	Ni	EPA 200.8	µg/L	0.104	2.000
Lead	Pb	EPA 200.8	µg/L	0.084	0.500
Antimony	Sb	EPA 200.8	µg/L	0.397	1.000
Selenium	Se	EPA 200.8	µg/L	0.622	2.500
Tin	Sn	EPA 200.8	µg/L	0.668	5.000
Strontium	Sr	EPA 200.8	µg/L	0.066	0.500
Titanium	Ti	EPA 200.8	µg/L	0.237	1.000
Thallium	Tl	EPA 200.8	µg/L	0.098	0.500
Vanadium	V	EPA 200.8	µg/L	2.069	5.000
Zinc	Zn	EPA 200.8	µg/L	0.313	5.000
Total Metals	Total Metals (calc.)	EPA 200.8	µg/L	µg/L =(Cr µg/L)+(Cu µg/L)+(Ni µg/L)+(Zn µg/L)	
Hardness	Hardness (calc.)	SM 2340 <sup>2</sup>	mg/L	CaCO <sub>3</sub> mg/L =(2.497*Ca mg/L)+(4.118*Mg mg/L)	
<i>Escherichia coli</i>	<i>E. coli</i>	EPA 1603	cfu/100mL	1 colony	--
		Colilert QT (SM 9223 B 20th Ed)	MPN/100mL	1 MPN	1 MPN
Chlorophyll <i>a</i>	Chlorophyll <i>a</i>	EPA 445.0	µg/L	0.02	0.1
Chemical Oxygen Demand	COD	EPA 410.4	mg/L	4.6	10
Biological Oxygen Demand	BOD	SM 5210 <sup>2</sup>	mg/L	2	N/A
Total Solids	TS	SM 2540 B <sup>2</sup>	mg/L	1	5
Total Suspended Solids	TSS	SM 2540 D <sup>2</sup>	mg/L	0.5	1
Total Dissolved Solids	TDS	SM 2540 C <sup>2</sup>	mg/L	1	5
Turbidity **		EPA 180.1	NTU	0.1	0.2
<b>Field Parameter</b>		<b>Test</b>		<b>(Value Reported in)</b>	
pH		EPA 150.1 <sup>2</sup>		s.u.	
Conductivity		SM 2510A <sup>2</sup>		µs/cm	
Specific Conductivity		SM 2510B <sup>2</sup>		µs/cm	
Dissolved Oxygen	DO	SM 4500-0 G <sup>2</sup>		mg/L	
Temperature	Temp	EPA 1701.1 <sup>2</sup>		°C	
Turbidity **		EPA 180.1		NTU	

<sup>1</sup> Listed MDL/PQL is for undistilled samples. Any samples that require distillation will have a MDL = 0.051 mg/L, PQL = 0.100 mg/L

<sup>2</sup> Standard Methods for the Examination of Water and Wastewater, Method approved by Standard Methods Committee, 1997. Editorial revisions, 2011.

\*\* Turbidity will either be completed in the field or at the laboratory.

## Appendix C



## YSI 600XL and 600XLM Sondes

### **Measure multiple parameters simultaneously**

The YSI 600XL and YSI 600XLM compact sondes measure eleven parameters simultaneously:

Temperature	TDS
Conductivity	pH
Specific Conductance	ORP
Salinity	Depth or Level
Resistivity	Rapid Pulse™ DO (% and mg/L)



The YSI 600XL and 600XLM

### **Connect with Data Collection Platforms**

Either sonde can easily connect to the YSI 6200 DAS (Data Acquisition System), YSI EcoNet™ or your own data collection platform, via SDI-12 for remote and real-time data acquisition applications.

### **Economical Logging System**

The YSI 600XLM is an economical logging system for long-term, *in situ* monitoring and profiling. It will log all parameters at programmable intervals and store 150,000 readings. At one-hour intervals, the instrument will log data for about 75 days utilizing its own power source. The 600XL can also be utilized in the same manner with user-supplied external power.

- Either sonde fits down 2-inch wells
- Horizontal measurements in very shallow waters
- Stirring-independent Rapid Pulse® dissolved oxygen sensor
- Field-replaceable sensors
- Easily connects to data collection platforms
- Available with detachable cables to measure depth up to 200 feet
- Compatible with YSI 650 Multiparameter Display System
- Use with the YSI 5083 flow cell for groundwater applications

Pure  
Data for a  
Healthy  
Planet.®

*Economical, multiparameter  
sampling or logging in a  
compact sonde*

### **Sensor performance verified\***

The 6820 VZ and 6920 VZ sondes use sensor technology that was verified through the US EPA's Environmental Technology Verification Program (ETV). For information on which sensors were performance-verified, turn this sheet over and look for the ETV logo.





To order, or for more info,  
contact YSI Environmental.

+1 937 767 7241  
800 897 4151 (US)  
www.ysi.com

YSI Environmental  
+1 937 767 7241  
Fax +1 937 767 9353  
environmental@ysi.com

Endeco/YSI  
+1 508 748 0366  
Fax +1 508 748 2543  
systems@ysi.com

SonTek/YSI  
+1 858 546 8327  
Fax +1 858 546 8150  
inquiry@sontek.com

YSI Gulf Coast  
+1 225 753 2650  
Fax +1 225 753 8669  
environmental@ysi.com

YSI Hydrodata (UK)  
+44 1462 673 581  
Fax +44 1462 673 582  
europe@ysi.com

YSI Middle East (Bahrain)  
+973 1753 6222  
Fax +973 1753 6333  
halsalem@ysi.com

YSI (Hong Kong) Limited  
+852 2891 8154  
Fax +852 2834 0034  
hongkong@ysi.com

YSI (China) Limited  
+86 10 5203 9675  
Fax +86 10 5203 9679  
beijing@ysi-china.com

YSI Nanotech (Japan)  
+81 44 222 0009  
Fax +81 44 221 1102  
nanotech@ysi.com

ISO 9001  
ISO 14001

Yellow Springs, Ohio Facility

ROX and Rapid Pulse are trademarks and  
EcoWatch, Pure Data for a Healthy Planet  
and Who's Minding the Planet? are registered  
trademarks of YSI Incorporated.

© 2007 YSI Incorporated  
Printed in USA 0107 E55-01



\*Sensors sold with the ETV logo were submitted into the ETV  
program on the 1st of 2007. Information on the full range  
characteristics of YSI water quality sensors can be found at  
www.ysi.com or call YSI at 800 897 4151 for the ETV verification  
report. Use of the ETV name or logo does not imply approval  
or certification of this product nor does it make any explicit or  
implied warranties or guarantees as to product performance.

YSI incorporated  
Who's Minding  
the Planet?

## YSI 600XL & 600XLM Sensor Specifications

	Range	Resolution	Accuracy
Dissolved Oxygen % Saturation 6562 Rapid Pulse™ Sensor* <b>ETV</b>	0 to 500%	0.1%	0 to 200%: ±2% of reading or 2% air saturation, whichever is greater; 200 to 500%: ±6% of reading
Dissolved Oxygen mg/L 6562 Rapid Pulse™ Sensor* <b>ETV</b>	0 to 50 mg/L	0.01 mg/L	0 to 20 mg/L: ±0.2 mg/L or 2% of reading, whichever is greater; 20 to 50 mg/L: ±6% of reading
Conductivity* 6560 Sensor* <b>ETV</b>	0 to 100 mS/cm	0.001 to 0.1 mS/cm (range dependent)	±0.5% of reading + 0.001 mS/cm
Salinity	0 to 70 ppt	0.01 ppt	±1% of reading or 0.1 ppt, whichever is greater
Temperature 6560 Sensor* <b>ETV</b>	-5 to +50°C	0.01°C	±0.15°C
pH 6561 Sensor* <b>ETV</b>	0 to 14 units	0.01 unit	±0.2 unit
ORP	-999 to +999 mV	0.1 mV	±20 mV
Depth & Level Medium Shallow Vented Level	0 to 200 ft, 61 m	0.001 ft, 0.001 m	±0.4 ft, ±0.12 m
	0 to 30 ft, 9.1 m	0.001 ft, 0.001 m	±0.06 ft, ±0.02 m
	0 to 30 ft, 9.1 m	0.001 ft, 0.001 m	±0.01 ft, 0.003 m

\* Report outputs of specific conductance (conductivity corrected to 25°C), resistivity, and total dissolved solids are also provided. These values are automatically calculated from conductivity according to algorithms found in *Standard Methods for the Examination of Water and Wastewater* (ed 1989).

## YSI 600XL & 600XLM Sonde Specifications

Medium		Fresh, sea or polluted water
Temperature	Operating	-5 to +50°C
	Storage	-10 to +60°C
Communications		RS-232, SDI-12
Software		EcoWatch*
Dimensions 600XL   600XLM	Diameter	1.65 in, 4.19 cm   1.65 in, 4.9 cm
	Length	16 in, 40.6 cm   21.3 in, 54.1 cm
	Weight	1.3 lbs, 0.59 kg   1.5 lbs, 0.69 kg
Power	External	12 V DC
	Internal (600XLM only)	4 AA-size alkaline batteries

YSI model 5083  
flow cell and  
600XL. This is an  
ideal combination  
for groundwater  
applications.



# HI 98129

## Combo pH/EC/TDS/Temperature Tester with Low Range EC



### Description

The HI 98129 Combo waterproof tester offer high accuracy pH, EC/TDS and temperature measurements in a single tester! No more switching between meters for your routine measurements. The waterproof Combo (it even floats) has a large easy-to-read, dual-level LCD and automatic shut-off. pH and EC/TDS readings are automatically compensated for the effects of temperature (ATC). This technologically advanced tester has a replaceable pH electrode cartridge with an extendable cloth junction as well as an EC/TDS graphite electrode that resists contamination by salts and other substances. This gives these meters a greatly extended life. Your tester no longer needs to be thrown away when the pH sensor is exhausted.

The EC/TDS conversion factor is user selectable as is the temperature compensation coefficient ( $\beta$ ). Fast, efficient, accurate and portable, the Combo pH, EC/TDS and temperature tester brings you all the features you've asked for and more!

### Specifications

Range	pH	0.00 to 14.00 pH
Range	EC	0 to 3999 $\mu\text{S}/\text{cm}$
Range	TDS	0 to 2000 ppm
Range	Temperature	0.0 to 60.0°C / 32 to 140.0°F
Resolution	pH	0.01 pH
Resolution	EC	1 $\mu\text{S}/\text{cm}$
Resolution	TDS	1 ppm
Resolution	Temperature	0.1°C / 0.1°F
Accuracy	pH	$\pm 0.05$ pH
Accuracy	EC/TDS	$\pm 2\%$ F.S.
Accuracy	Temperature	$\pm 0.5^\circ\text{C}$ / $\pm 1^\circ\text{F}$
Temperature Compensation		pH: automatic; EC/TDS: automatic with $\beta$ adjustable from 0.0 to 2.4% / °C
Calibration	pH	automatic, 1 or 2 points with 2 sets of memorized buffers (pH 4.01 / 7.01 / 10.01 or 4.01 / 6.86 / 9.18)
Calibration	EC/TDS	automatic, 1 point
TDS Conversion Factor		adjustable from 0.45 to 1.00
pH Electrode		HI 73127 (replaceable; included)
Environment		0 to 50°C (32 to 122°F); RH max 100%
Battery Type / Life		4 x 1.5V / approx. 100 hours of continuous use; auto-off after 8 minutes of non-use
Dimensions		163 x 40 x 26 mm (6.4 x 1.6 x 1.0")
Weight		100 g (3.5 oz.)





## HQ30d Portable pH, Conductivity, Dissolved Oxygen (DO), ORP, and ISE Multi-Parameter Meter



Product #: HQ30D53000000 Quantity  
 USD Price: \$750.00

★★★★★ 5/5

[Read 1 review](#) [Write a review](#) [Follow this product](#)

Portable meter measures critical water quality parameters - without the need for multiple instruments

Single input channel for flexible measurement of pH, Conductivity, Dissolved Oxygen (DO), BOD, ORP, Ammonia, Ammonium, Fluoride, Chloride, Sodium, and temperature - any INTELiCAL™ smart probe

Intuitive user interface for simple operation and accurate results

Guided calibration and check standard reviews reduce calibration errors. Stabilization alerts and visual measurement lock ensure that you can trust the accuracy of the results.

Trust your measurements - INTELiCAL™ smart probes store all calibrations in the probe

Calibration history allows quick and easy change out of probes without re-calibrating. The HCD™ smart system records serial numbers, current calibration data, user ID, sample ID time, and date automatically in the data log for complete GLP traceability.

Designed for demanding conditions

Rugged, waterproof (IP67) meter provides worry-free, reliable operation in lab or field environments.

Convenient kit includes everything you need to start testing

Meter kit includes 4 AA batteries, quick-start guide, user manual and documentation CD

### Specifications

AC and USB Operation	optional
Automatic Buffer Recognition	Color-coded: 4.01, 7.00, 10.01 pH IUPAC: 1.070, 4.005, 7.000, 10.012, 12.45 DIN: 1.00, 4.05, 6.323 User-defined custom buffer sets
Barometric Pressure Measurement	For automatic compensation of DO when using an LDO or LBOD probe
Battery Requirements	4 AA
Benchtop	with stand
BOD5/CBOD resolution	Available when used with Hach WIMS BOD Manager software
Cable resistance correction	Digital - not needed
Calibration curves display	Calibration summary data logged and displayed
Calibration Intervals/Alerts/Reminder	2 hours to 7 days
Compliance	CE, WEEE
Conductivity Accuracy	± 0.5 % from (1µS/cm - 200 mS/cm)
Conductivity measurement	5 different stability modes
Conductivity Measurement Range	0.01 µS/cm to 200 mS/cm
Conductivity resolution	0.01 µS/cm with 2 digits
Custom Calibration Standards	User-defined standard sets
Data Export	Download via USB connection to PC or flash stick Automatically transfer entire data log or as readings are taken
Data Memory	500 results
Digital (Intelligent) electrode inputs	2
Dimensions (H x W x D)	7.8 in x 3.7 in x 1.4 in (197 mm x 95 mm x 36 mm)
Display	Display readings from one or two probes Simultaneous readings from two probes (HQ40d only) pH, pH, mV, temperature Conductivity, Conductivity, TDS, salinity, resistivity, temperature LDO, dissolved oxygen, pressure, temperature LBOD, dissolved oxygen, pressure, temperature ORP/Redox, mV, temperature Sodium, Sodium, mV, temperature
Display Lock Function	Continuous measurement or press to read mode available with averaging function for LDO measurement.
Display Type	240 x 160 pixel Display readings from one or two probes pH, pH, mV, temperature Conductivity, Conductivity, TDS, salinity, resistivity, temperature LDO, dissolved oxygen, pressure, temperature ORP/Redox, mV, temperature Sodium, Sodium, mV, temperature
DO Measurement Range	0.01 to 20 mg/L (0 to 200%)
DO Resolution	0.01 mg/L
Fixed Buffer Selection	(IUPAC standards [DIN 19286] or Technical buffer [DIN 19287] or 4-7-10 series or user defined)
Inputs	M12 digital (1) for INTELiCAL probes
Interface Languages	13**
Internal Data Storage	500
IP Rating	IP67
Languages:	English, French, German, Italian, Spanish, Danish, Dutch, Polish, Portuguese, Turkish, Swedish, Czech, Russian
mV Accuracy	± 0.1 mV
mV Measurement at Stable Reading	5 (auto) stabilization settings
mV Resolution	0.1 mV
Operating Error Messages	Text messages displayed
Operating Humidity	90 % relative humidity (non-condensing)
Operating Interface	Keypad
Operating Temperature	5 to 45 °C
ORP Electrode Calibration	Predefined ORP standards (including Zobell's solution)
Outputs	USB to PC / flash stick
PC Data Transfer Software	Included
pH Measurement at stable reading	5 stabilization settings
Printer	Optional accessory
Salinity Resolution	0.01 ppt
Warranty	3 years
Water Resistance	Meter Casing: 1 meter submersion for 30 minutes (IP67)
Weight	0.74 lbs (0.335 kg)

# 2100P and 2100P IS Portable Turbidimeter

Turbidimetry

## Features and Benefits

### Laboratory Quality in a Portable Unit

The Hach 2100P and 2100P IS Portable Turbidimeters offer a level of performance previously possible only with laboratory instruments. Microprocessor-controlled operation and Hach's unique Ratio™ optics bring great accuracy, sensitivity, and reliability to field and in-plant testing.

### Two Models for Specific Requirements

- **2100P Turbidimeter**—Get fast, accurate turbidity testing in the field or the lab, over a wide range of samples. Compliant with USEPA Method 180.1 design criteria.
- **2100P IS Turbidimeter**—Designed to meet international standards that mandate measurement using an LED light source.

### Two-detector Optical System

The two-detector optical system compensates for color in the sample, light fluctuation, and stray light, enabling analysts to achieve laboratory-grade performance on a wide range of samples, even under difficult, onsite conditions.



The Hach 2100P and 2100P IS Portable Turbidimeters bring laboratory-level performance on-site, offering fast, accurate results and the ease-of-use analysts demand in the field.

With a measurement range of 0 to 1000 NTU and a resolution of 0.01 NTU, the 2100P turbidimeter is ideal for regulatory monitoring, process control or field studies.

## Specifications\*

	2100P	2100P IS
<b>Measurement Method</b>	Nephelometric Ratio	
<b>Regulatory</b>	Meets EPA Method 180.1	Meets EN ISO 7027
<b>Light Source</b>	Tungsten lamp	Light-emitting diode (LED) @ 860 nm
<b>Range</b>		
<i>Automatic Range Mode</i>	0 to 1000 NTU	0 to 1000 FNU
<i>Manual Range Selection</i>	0 to 9.99, 0 to 99.9 and 0 to 1000 NTU	0 to 9.99, 0 to 99.9 and 0 to 1000 FNU
<b>Accuracy</b>	±2% of reading plus stray light	
<b>Repeatability</b>	±1% of reading, or 0.01 NTU, whichever is greater	±1% of reading, or 0.01 FNU, whichever is greater
<b>Resolution</b>	0.01 on lowest range	
<b>Signal Averaging</b>	Selectable on/off	
<b>Power Requirement</b>	4 AA alkaline batteries or optional battery eliminator	
<b>Battery Life, Typical</b>	300 tests with signal average mode off 180 tests with signal average mode on	
<b>Operating Temperature</b>	0 to 50°C (32 to 122°F)	
<b>Sample Required</b>	15 mL (0.5 oz.)	
<b>Sample Cells</b>	60 x 25 mm (2.36 x 1 in.) borosilicate glass with screw caps	
<b>Dimensions</b>	22.2 x 9.5 x 7.9 cm (8.75 x 3.75 x 3.12 in.)	
<b>Weight</b>	0.5 kg (1.1 lb.); shipping weight 2.7 kg (6 lb.)	
<b>Warranty</b>	2 years	

\*Specifications subject to change without notice.

DW = drinking water WW = wastewater municipal PW = pure water / power  
IW = industrial water E = environmental C = collections FB = food and beverage



Be Right™



## 2100Q and 2100Q is Portable Turbidimeter



*The Hach 2100Q and 2100Q is Portable Turbidimeters offer unsurpassed ease of use and accuracy in turbidity measurement. Only Hach offers this unique combination of advanced features, such as assisted calibration and simplified data transfer, and measurement innovation, giving you accurate results every time.*

D

W

P

I

F

### Features and Benefits

#### Easy Calibration and Verification

Hach 2100Q and 2100Q is Portable Turbidimeters provide confidence your measurements are right every time. On-screen assisted calibration and verification save you time and ensure accuracy. With an easy-to-follow interface, complicated manuals are not needed to perform routine calibrations. Single-standard RapidCal™ calibration offers a simplified solution for low level measurements.

#### Simple Data Transfer

Data transfer with the optional USB + Power Module is simple, flexible, and doesn't require additional software. All data can be transferred to the module and easily downloaded to your computer with a USB connection, providing superior data integrity and availability. With two different module options, you can customize connectivity and power to meet your unique needs.

#### Accurate for Rapidly Settling Samples

The Hach 2100Q Portable Turbidimeter incorporates an innovative Rapidly Settling Turbidity™ mode to provide accurate, repeatable measurements for difficult to measure, rapidly settling samples. An exclusive algorithm that

calculates turbidity based on a series of automatic readings eliminates redundant measurements and estimating.

#### Convenient Data Logging

Up to 500 measurements are automatically stored in the instrument for easy access and backup. Stored information includes: date and time, operator ID, reading mode, sample ID, sample number, units, calibration time, calibration status, error messages and the result.

#### Optical System for Precision in the Field

The two-detector optical system compensates for color in the sample, light fluctuation, and stray light, enabling analysts to achieve laboratory-grade performance on a wide range of samples, even under difficult site conditions.

#### Two Models for Specific Requirements

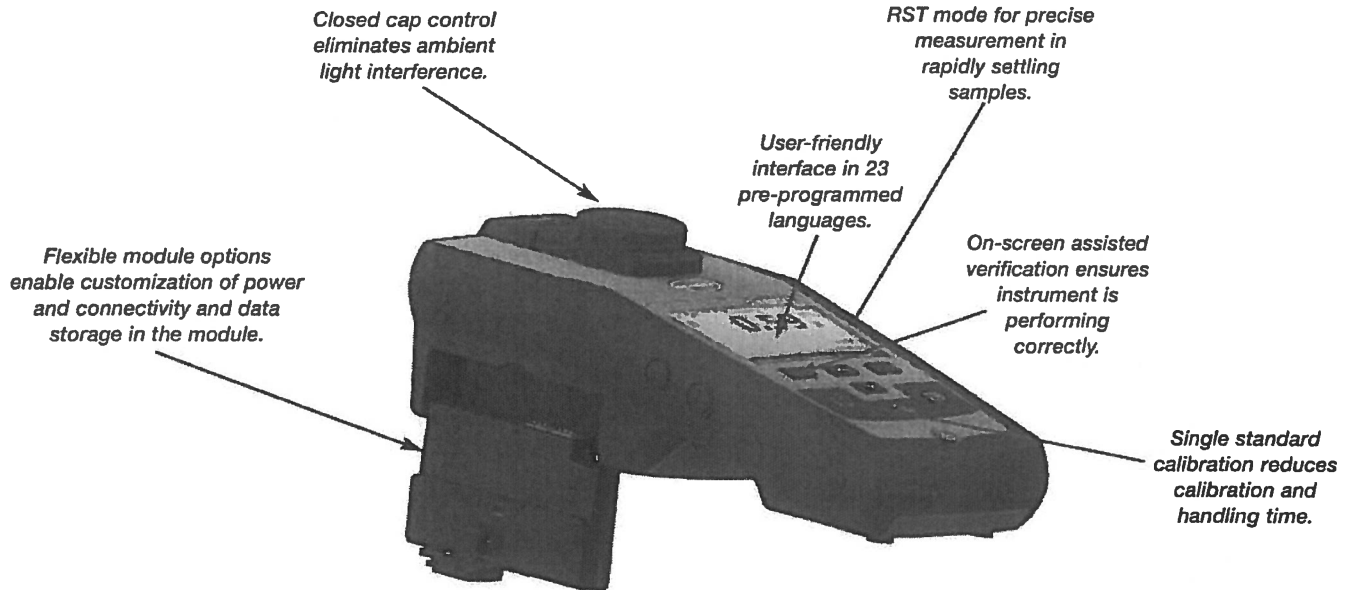
- **2100Q Turbidimeter**—Compliant with USEPA Method 180.1 design criteria.
- **2100Q is Turbidimeter**—Compliant with ISO 7027 design criteria.

DW = drinking water WW = wastewater municipal PW = pure water / power  
IW = industrial water E = environmental C = collections FB = food and beverage



Be Right™

## Key Features



## Specifications\*

### Measurement Method

Ratio turbidimetric determination using a primary nephelometric light scatter signal (90°) to the transmitted light scatter signal.

### Regulatory

2100Q: Meets EPA Method 180.1  
2100Q is: Meets ISO 7027

### Light Source

2100Q: Tungsten filament lamp  
2100Q is: Light-emitting diode (LED) @ 860 nm

### Range

0 to 1000 NTU (FNU)

### Accuracy

±2% of reading plus stray light from 0 to 1000 NTU

### Repeatability

±1% of reading, or 0.01 NTU (FNU), whichever is greater

### Resolution

0.01 NTU on lowest range

### Stray Light

<0.02 NTU (FNU)

### Signal Averaging

Selectable on/off

### Detector

Silicon photovoltaic

### Reading Modes (user selectable)

Normal (Push to Read)  
Signal Averaging  
Rapidly Settling Turbidity

### Data Logger

500 records

### Power Requirement

110-230 Vac, 50/60 Hz (with Power or USB+Power Module)  
4 AA alkaline batteries  
Rechargeable NiMH (for use with USB+Power Module)

### Operating Conditions

Temperature: 0 to 50°C (32 to 122°F)  
Relative Humidity: 0 to 90% @ 30°C,  
0 to 80% @ 40°C, 0 to 70% @ 50°C, noncondensing

### Storage Conditions

-40 to 60°C (-40 to 140°F), instrument only

### Languages

English, French, German, Italian, Spanish, Portuguese (BR), Portuguese (PT), Bulgarian, Chinese, Czech, Danish, Dutch, Finnish, Greek, Hungarian, Japanese, Korean, Polish, Romanian, Russian, Slovenian, Swedish, Turkish

### Interface

Optional USB

### Instrument Enclosure Rating

IP67 (closed lid, battery compartment excluded)

### Protection Class

Power Supply: Class II

### Certification

CE certified

### Sample Required

15 mL (0.3 oz.)

### Sample Cells

60 x 25 mm (2.36 x 1 in.) borosilicate glass with screw cap

### Dimensions

22.9 x 10.7 x 7.7 cm (9.0 x 4.2 x 3.0 in.)

### Weight

527 g (1.16 lb) without batteries  
618 g (1.36 lb) with four AA alkaline batteries

### Warranty

1 year

\*Specifications subject to change without notice.

# Sondes: EXO1 EXO2

Removable Bail

6-Pin Cable Connector

High-impact Xenoy Housing

Pressure Transducer Opening

Red LED Indicator - Status

Blue LED Indicator - Bluetooth

On/Off Magnetic Switch for Power and Bluetooth

4-Pin Wet-Mateable Connectors

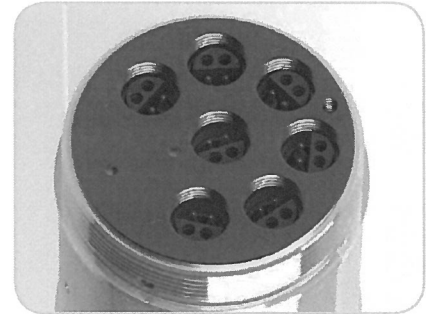
Port Plug

Anti-fouling Wiper

# EXO2



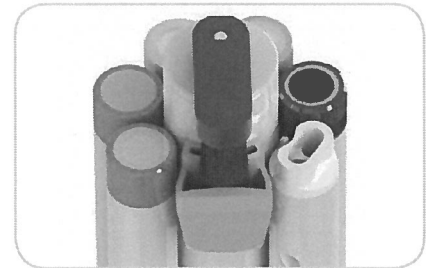
Cable connector, battery valve, and expansion port for an additional sensor



EXO2 sonde contains 6 universal sensor ports plus a central port for an anti-fouling wiper

Battery Compartment

Cutaway: Reinforced internal structure



Anti-fouling wiper keeps sensors clear of biofouling and lengthens deployment times by 25%

Welded Titanium Housing



EXO1 sonde contains 4 universal sensor ports

## Instrument Specifications\*

<b>EXO1 Sonde</b>		
Ports	4 sensor ports Peripheral port: 1 power communication port	
Size	Diameter: 4.70 cm (1.85 in) Length: 64.77 cm (25.50 in)	
Weight	1.42 kg (3.15 lbs) with 4 probes, guard and batteries installed	
<b>EXO2 Sonde</b>		
Ports	7 sensor ports (6 ports available when central wiper used) Peripheral ports: 1 power communication port; 1 auxiliary expansion port	
Size	Diameter: 7.62 cm (3.00 in) Length: 71.10 cm (28.00 in)	
Weight	3.60 kg (7.90 lbs) with 5 probes, guard and batteries installed	
<b>Sondes</b>		
Operating Temperature	-5 to 50°C	
Storage Temperature	-20 to 80°C (except 0 to 60°C for pH and pH/ORP sensors)	
Depth Rating	0 to 250 m (0 to 820 ft)	
Communications	Computer Interface: Bluetooth wireless technology, RS-485, USB Output Options: USB with signal output adapter (SOA); RS-232 & SDI-12 with DCP-SOA	
Sample Rate	Up to 4 Hz	
Battery Life	90 days**	
Data Memory	512 MB total memory; >1,000,000 logged readings	
<b>Sensors</b>		<b>Calculated Parameters</b>
Ammonium	ORP	Salinity
Chloride	pH	Specific Conductance
Conductivity	Temperature	Total Dissolved Solids
Depth	Total Algae (Chlorophyll + BGA-PC or PE)	Total Suspended Solids
Dissolved Oxygen	Turbidity	
Fluorescent Dissolved Organic Matter (fDOM)	Vented Level	
Nitrate		
<b>EXO Handheld</b>		
Size	Width: 12.00 cm (4.72 in) Height: 25.00 cm (9.84 in)	
Weight	0.71 kg (1.56 lbs) without batteries	
Operating System	Windows CE 5.0	
Operating Temperature	-10 to 50°C	
Storage Temperature	-20 to 80°C	
IP Rating	IP-67	
Data Memory	2 GB total memory; >2,000,000 data sets	
<b>Accessories</b>		
Cables (vented and non-vented)	Flow cells	Sonde/sensor guard
Carrying case	KOR software	Calibration cup
DCP Signal Output Adapter	USB Signal Output Adapter	Anti-fouling components
<b>Warranty</b>		
3 months	Replaceable reagent modules for ammonium, chloride, and nitrate	
1 Year	Optical DO membranes and replaceable reagent modules for pH and pH/ORP	
2 Years	Cables; sonde bulkheads; handheld; conductivity, temperature, depth, and optical sensors; electronics base for pH, pH/ORP, ammonium, chloride, and nitrate sensors; and accessories	

\* Specifications indicate typical performance and are subject to change. Please check EXOwater.com for up-to-date information.

\*\* Typically 90 days at 20°C at 15-minute logging interval; temperature/conductivity, pH/ORP, DO, and turbidity sensors installed on EXO1; or temperature/conductivity, pH/ORP, DO, total algae, and turbidity sensors installed with central wiper that rotates once per logging interval on EXO2. Battery life is heavily dependent on sensor configuration.

EXO Bluetooth modules comply with Part 15C of FCC Rules and have FCC, CE Mark and C-tick approval. Bluetooth-type approvals and regulations can be country specific. Check local laws and regulations to insure that the use of wireless products purchased from Xylem are in full compliance.

## Sensor Specifications\*

Sensor	Range	Accuracy*	Response	Resolution
Ammonium <sup>11</sup> (ammonia with pH sensor)	0 to 200 mg/L <sup>1</sup>	±10% of reading or 2 mg/L-N, w.i.g.	-	0.01 mg/L
Barometer	375 to 825 mmHg	±1.5 mmHg from 0 to 50°C	-	0.1 mmHg
Blue-green Algae Phycocyanin (PC) (part of Total Algae sensor)	0 to 100 RFU; 0 to 100 µg/L PC	Linearity: R <sup>2</sup> > 0.999 for serial dilution of Rhodamine WT solution from 0 to 100 µg/mL PC equivalents	T63<2 sec	0.01 RFU; 0.01 µg/L PC
Blue-green Algae Phycoerythrin (PE) (part of Total Algae sensor)	0 to 100 RFU; 0 to 280 µg/L PE	Linearity: R <sup>2</sup> > 0.999 for serial dilution of Rhodamine WT solution from 0 to 280 µg/mL PE equivalents	T63<2 sec	0.01 RFU; 0.01 µg/L PE
Chloride <sup>11</sup>	0 to 1000 mg/L-Cl <sup>2</sup>	±15% of reading or 5 mg/L-Cl, w.i.g.	-	0.01 mg/L
Chlorophyll (part of Total Algae sensor)	0 to 400 µg/L Chl; 0 to 100 RFU	Linearity: R <sup>2</sup> > 0.999 for serial dilution of Rhodamine WT solution from 0 to 400 µg/L Chl equivalents	T63<2 sec	0.01 µg/L Chl; 0.01 RFU
Conductivity <sup>3</sup>	0 to 200 mS/cm	0 to 100: ±0.5% of reading or 0.001 mS/cm, w.i.g.; 100 to 200: ±1% of reading	T63<2 sec	0.0001 to 0.01 mS/cm (range dependent)
Depth <sup>4</sup> (non-vented)	0 to 10 m (0 to 33 ft)	±0.04% FS (±0.004 m or ±0.013 ft)	T63<2 sec	0.001 m (0.001 ft) (auto-ranging)
	0 to 100 m (0 to 328 ft)	±0.04% FS (±0.04 m or ±0.13 ft)		
	0 to 250 m (0 to 820 ft)	±0.04% FS (±0.10 m or ±0.33 ft)		
Vented Level	0 to 10 m (0 to 33 ft)	±0.03% FS (±0.003 m or ±0.010 ft)		
Dissolved Oxygen Optical	0 to 500% air saturation	0 to 200%: ±1% of reading or 1% saturation, w.i.g.; 200 to 500%: ±5% of reading <sup>5</sup>	T63<5 sec <sup>6</sup>	0.1% air saturation
	0 to 50 mg/L	0 to 20 mg/L: ±0.1 mg/L or 1% of reading, w.i.g.; 20 to 50 mg/L: ±5% of reading <sup>5</sup>		0.01 mg/L
fDOM	0 to 300 ppb Quinine Sulfate equivalents (QSE)	Linearity: R <sup>2</sup> > 0.999 for serial dilution of 300 ppb QS solution Detection Limit: 0.07 ppb QSE	T63<2 sec	0.01 ppb QSE
Nitrate <sup>11</sup>	0 to 200 mg/L-N <sup>1</sup>	±10% of reading or 2 mg/L-N, w.i.g.	-	0.01 mg/L
ORP	-999 to 999 mV	±20 mV in Redox standard solutions	T63<5 sec <sup>7</sup>	0.1 mV
pH	0 to 14 units	±0.1 pH units within ±10°C of calibration temp; ±0.2 pH units for entire temp range <sup>8</sup>	T63<3 sec <sup>9</sup>	0.01 units
Salinity (Calculated from Conductivity and Temperature)	0 to 70 ppt	±1.0% of reading or 0.1 ppt, w.i.g.	T63<2 sec	0.01 ppt
Specific Conductance (Calculated from Cond. and Temp.)	0 to 200 mS/cm	±0.5% of reading or .001 mS/cm, w.i.g.	-	0.001, 0.01, 0.1 mS/cm (auto-scaling)
Temperature	-5 to 50°C	-5 to 35°C: ±0.01°C <sup>10</sup> 35 to 50°C: ±0.05°C <sup>10</sup>	T63<1 sec	0.001 °C
Total Dissolved Solids (TDS) (Calculated from Conductivity and Temperature)	0 to 100,000 g/L Cal constant range 0.30 to 1.00 (0.64 default)	Not Specified	-	variable
Total Suspended Solids (TSS) (Calculated from Turbidity and user reference samples)	0 to 1500 mg/L	Not Specified	T63<2 sec	variable
Turbidity <sup>11</sup>	0 to 4000 FNU	0 to 999 FNU: 0.3 FNU or ±2% of reading, w.i.g.; 1000 to 4000 FNU: ±5% of reading <sup>12</sup>	T63<2 sec	0 to 999 FNU: 0.01 FNU; 1000 to 4000 FNU: 0.1 FNU

All sensors have a depth rating to 250 m (820 ft), except shallow and medium depth sensors and ISEs. EXO sensors are not backward compatible with 6-Series sondes.

\* Specifications indicate typical performance and are subject to change. Please check EXOwater.com for up-to-date information. Accuracy specification is attained immediately following calibration under controlled and stable environmental conditions. Performance in the natural environment may vary from quoted specification.

<sup>1</sup> 0-30°C    <sup>2</sup> 0-40°C    w.i.g. = whichever is greater

<sup>3</sup> Outputs of specific conductance (conductivity corrected to 25°C) and total dissolved solids are also provided. The values are automatically calculated from conductivity according to algorithms found in *Standard Methods for the Examination of Water and Wastewater* (Ed. 1989).

<sup>4</sup> Accuracy specifications apply to conductivity levels of 0 to 100,000 µS/cm.

<sup>5</sup> Relative to calibration gases

<sup>6</sup> When transferred from air-saturated water to stirred deaerated water

<sup>7</sup> When transferred from water-saturated air to Zobell solution

<sup>8</sup> Within the environmental pH range of pH 4 to pH 10

<sup>9</sup> On transfer from water-saturated air to rapidly stirred air-saturated water at a specific conductance of 800 µS/cm at 20°C; T63<5 seconds on transfer from water-saturated air to slowly-stirred air-saturated water.

<sup>10</sup> Temperature accuracy traceable to NIST standards

<sup>11</sup> Calibration: 1-, 2-, or 3-point, user-selectable

<sup>12</sup> Specification is defined in AMCO-AEPA Standards



## FH950 Portable Velocity Meter with 20' Cable



Product #: FH950.10020      Quantity  
 USD Price: \$4,585.00  
 Ships within 2 weeks

### Reduce manhours 50%

The step-by-step user interface simplifies programming, delivers real-time data, and downloads directly to PC allowing a single person to take the readings and eliminating post site visit manual data transfer from logbook to PC

### Automatically calculates total discharge based on USGS and ISO methods

Reduces time to manually calculate and likelihood of errors

### Real-time velocity graphed on color display

Visualize velocity trends quickly

### Lowest maintenance solution on the market

Electromagnetic velocity sensor with no moving parts never requires mechanical maintenance

### Lightweight, rugged portable meter

Only 1.5 pounds

### What's in the box

#### FH950.1 System Includes:

- Portable Velocity Meter
- Electromagnetic Sensor with 20' cable
- Fabric Carrying Case
- Adjustable Meter Rod Mount
- Universal Sensor Mount
- Battery Charger with Domestic/International Plug Adapters
- USB Cable
- Lanyard
- Sensor Screw Kit
- Absorbent Wipe

### Specifications

Accuracy 2:	$\pm 2\%$ of reading $\pm 0.05$ ft/s ( $\pm 0.015$ m/s) through the range of 0 to 10 ft/s (0 to 3.04 ms/s); $\pm 4\%$ of reading from 10 to 16 ft/s (3.04 to 4.87 m/s)
Battery Life:	heavy typical day use; 68°F (20°C)
Display: LCD:	Color, LCD 3.5 QVGA transfective (readable in direct sunlight)
Keypad:	Alpha-numerica
Operating Temperature Range:	-20 to 55 °C
Range:	to ft/s
Resolution:	Measurement Resolution - <10: 0.001; <100: 0.01; >100: 0.1
Storage Conditions:	-20 °C to 60 °C



## Appendix D

## NEORSD Chlorophyll a Sampling Field Sheet

Stream: \_\_\_\_\_  
 Location: \_\_\_\_\_  
 RM: \_\_\_\_\_  
 Lat/Long: \_\_\_\_\_

Collectors: \_\_\_\_\_  
 Date: \_\_\_\_\_  
 Time: \_\_\_\_\_

Number of Rocks: \_\_\_\_\_

Total Area Scraped: \_\_\_\_\_ cm<sup>2</sup>

Diameter of individual scrape

Area of individual scrape

- 1 \_\_\_\_\_
- 2 \_\_\_\_\_
- 3 \_\_\_\_\_
- 4 \_\_\_\_\_
- 5 \_\_\_\_\_
- 6 \_\_\_\_\_
- 7 \_\_\_\_\_
- 8 \_\_\_\_\_
- 9 \_\_\_\_\_
- 10 \_\_\_\_\_
- 11 \_\_\_\_\_
- 12 \_\_\_\_\_
- 13 \_\_\_\_\_
- 14 \_\_\_\_\_
- 15 \_\_\_\_\_
- 16 \_\_\_\_\_
- 17 \_\_\_\_\_
- 18 \_\_\_\_\_
- 19 \_\_\_\_\_
- 20 \_\_\_\_\_
- 21 \_\_\_\_\_
- 22 \_\_\_\_\_
- 23 \_\_\_\_\_
- 24 \_\_\_\_\_
- 25 \_\_\_\_\_

- 1 \_\_\_\_\_
- 2 \_\_\_\_\_
- 3 \_\_\_\_\_
- 4 \_\_\_\_\_
- 5 \_\_\_\_\_
- 6 \_\_\_\_\_
- 7 \_\_\_\_\_
- 8 \_\_\_\_\_
- 9 \_\_\_\_\_
- 10 \_\_\_\_\_
- 11 \_\_\_\_\_
- 12 \_\_\_\_\_
- 13 \_\_\_\_\_
- 14 \_\_\_\_\_
- 15 \_\_\_\_\_
- 16 \_\_\_\_\_
- 17 \_\_\_\_\_
- 18 \_\_\_\_\_
- 19 \_\_\_\_\_
- 20 \_\_\_\_\_
- 21 \_\_\_\_\_
- 22 \_\_\_\_\_
- 23 \_\_\_\_\_
- 24 \_\_\_\_\_
- 25 \_\_\_\_\_

Total: \_\_\_\_\_

Diameter to Area Conversion	
Diameter (cm)	Area (cm <sup>2</sup> )
1.6	2.011
1.7	2.27
1.8	2.545
1.9	2.835
2.0	3.142
2.1	3.464
2.2	3.801
2.3	4.155

Total Sample Volume \_\_\_\_\_ ml

Filter 1 LABLynx ID \_\_\_\_\_  
 Vol \_\_\_\_\_ ml

Filter 2 LABLynx ID \_\_\_\_\_  
 Vol \_\_\_\_\_ ml

Filter 3 LABLynx ID \_\_\_\_\_  
 Vol \_\_\_\_\_ ml

Water Column Chlorophyll Sample

Filter 1 LABLynx ID \_\_\_\_\_  
 Vol \_\_\_\_\_ ml

Filter 2 LABLynx ID \_\_\_\_\_  
 Vol \_\_\_\_\_ ml

Filter 3 LABLynx ID \_\_\_\_\_  
 Vol \_\_\_\_\_ ml

**Flow:**    None      Low      Normal      Elevated      High

**Turbidity:** Clear      Low      Moderate\*      High\*

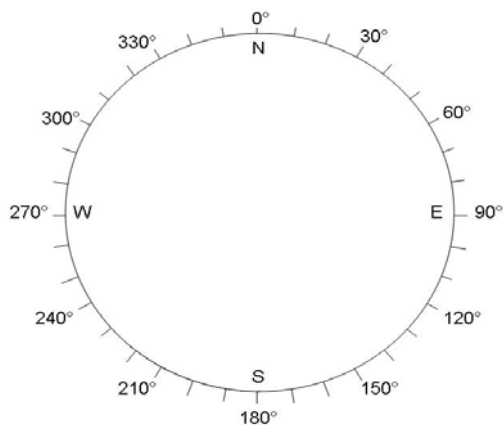
\*Explain \_\_\_\_\_

**Sky:**      Overcast    Cloudy      Partly Cloudy    Mostly Clear    Clear

**Canopy:** Open      Mostly Open    Partly Closed    Closed

**Riparian** None      Narrow L R    Moderate L R    Wide L R

Downstream Channel Direction



Clinometer

Left Bank \_\_\_\_\_°

Right Bank \_\_\_\_\_°

Left Bank \_\_\_\_\_°

Right Bank \_\_\_\_\_°

Left Bank \_\_\_\_\_°

Right Bank \_\_\_\_\_°

Stream Widths

\_\_\_\_\_m \_\_\_\_\_m \_\_\_\_\_m

Record two most predominate substrates with an X, and check all present.

	Riffle	Run	Reach
Boulder/Slabs	_____	_____	_____
Bedrock	_____	_____	_____
Boulder/Slabs	_____	_____	_____
Cobble	_____	_____	_____
Gravel	_____	_____	_____
Sand	_____	_____	_____
Silt	_____	_____	_____
Hardpan	_____	_____	_____
Detritus	_____	_____	_____
Artificial	_____	_____	_____

Substrate Origin

Limestone     Tills     Rip-rap  
 Sandstone     Shale     Wetlands  
 Lacustrine     Hardpan     Coal Fines

Silt

Heavy     Moderate     Normal     None

Embeddedness

Extensive     Moderate     Normal     None

Notes: \_\_\_\_\_

Length of Reach: \_\_\_\_\_m

Stream Drawing

## Appendix E

**COMMONWEALTH OF PENNSYLVANIA**  
**DEPARTMENT OF ENVIRONMENTAL PROTECTION**

*BUREAU OF LABORATORIES*  
*LABORATORY ACCREDITATION PROGRAM*



**pennsylvania**  
DEPARTMENT OF ENVIRONMENTAL  
PROTECTION

Certifies That

68-03670

**Northeast Ohio Regional Sewer District Analytical Services**  
**4747 East 49th Street, Cuyahoga Heights, OH 44125**



Having duly met the requirement of  
The act of June 29, 2002 (P.L. 596, No. 90)  
dealing with Environmental Laboratories Accreditation  
(27 Pa. C.S. §§4104-4113) and the  
National Environmental Laboratory Accreditation Program Standard

is hereby approved as an

**Accredited Laboratory**

to conduct analysis within the fields of accreditations more fully described in the attached Scope of Accreditation

Expiration Date: 11/30/2018

Certificate Number: 011

A handwritten signature in black ink, reading "Aaren Alger".

Aaren S. Alger, Chief  
Laboratory Accreditation Program  
Bureau of Laboratories

Continued accreditation status depends on successful ongoing participation in the program  
Certificate not transferable Surrender upon revocation  
To be conspicuously displayed at the Laboratory  
Not valid unless accompanied by a valid Scope of Accreditation  
Shall not be used to imply endorsement by the Commonwealth of Pennsylvania  
Customers are urged to verify the laboratory's current accreditation status  
PA DEP is a NELAP recognized accreditation body

### Laboratory Scope of Accreditation

Attached to Certificate of Accreditation 011-001 expiration date November 30, 2018. This listing of accredited analytes should be used only when associated with a valid certificate of accreditation.

DEP Laboratory ID: 68-03670

EPA Lab Code: OH00300

TNI Code: TNI02140


(216) 641-6000

PADWIS ID: 03670

**Northeast Ohio Regional Sewer District Analytical Services**  
4747 East 49th Street  
Cuyahoga Heights, OH 44125

#### Matrix: Non-Potable Water

Method	Revision	Analyte	Accreditation Type	Primary	Effective Date
EPA 1000.0		Pimephales promelas	NELAP	PA	1/8/2009
EPA 1002.0		Ceriodaphnia dubia	NELAP	PA	1/8/2009
EPA 160.4		Residue, volatile	NELAP	PA	10/22/2008
EPA 1600		Enterococci	NELAP	PA	11/22/2010
EPA 1603		E. coli (Enumeration)	NELAP	PA	11/29/2007
EPA 1631	E	Mercury	NELAP	PA	3/31/2008
EPA 1664	A	Oil and grease	NELAP	PA	4/27/2015
EPA 180.1		Turbidity	NELAP	PA	12/31/2007
EPA 200.7	4.4	Aluminum	NELAP	PA	11/29/2007
EPA 200.7	4.4	Antimony	NELAP	PA	11/29/2007
EPA 200.7	4.4	Arsenic	NELAP	PA	11/29/2007
EPA 200.7	4.4	Barium	NELAP	PA	11/29/2007
EPA 200.7	4.4	Beryllium	NELAP	PA	11/29/2007
EPA 200.7	4.4	Cadmium	NELAP	PA	11/29/2007
EPA 200.7	4.4	Calcium	NELAP	PA	11/29/2007
EPA 200.7	4.4	Chromium	NELAP	PA	11/29/2007
EPA 200.7	4.4	Cobalt	NELAP	PA	11/29/2007
EPA 200.7	4.4	Copper	NELAP	PA	12/31/2007
EPA 200.7	4.4	Iron	NELAP	PA	11/29/2007
EPA 200.7	4.4	Lead	NELAP	PA	11/29/2007
EPA 200.7	4.4	Magnesium	NELAP	PA	11/17/2010
EPA 200.7	4.4	Manganese	NELAP	PA	11/29/2007
EPA 200.7	4.4	Molybdenum	NELAP	PA	11/29/2007
EPA 200.7	4.4	Nickel	NELAP	PA	11/29/2007
EPA 200.7	4.4	Potassium	NELAP	PA	12/31/2007
EPA 200.7	4.4	Selenium	NELAP	PA	11/29/2007
EPA 200.7	4.4	Silver	NELAP	PA	11/29/2007
EPA 200.7	4.4	Sodium	NELAP	PA	12/31/2007
EPA 200.7	4.4	Strontium	NELAP	PA	4/27/2015
EPA 200.7	4.4	Thallium	NELAP	PA	4/15/2014
EPA 200.7	4.4	Tin	NELAP	PA	11/29/2007
EPA 200.7	4.4	Titanium	NELAP	PA	11/29/2007
EPA 200.7	4.4	Vanadium	NELAP	PA	11/29/2007
EPA 200.7	4.4	Zinc	NELAP	PA	12/31/2007
EPA 200.8	5.4	Aluminum	NELAP	PA	4/27/2015
EPA 200.8	5.4	Antimony	NELAP	PA	4/27/2015
EPA 200.8	5.4	Arsenic	NELAP	PA	4/27/2015
EPA 200.8	5.4	Barium	NELAP	PA	4/27/2015
EPA 200.8	5.4	Beryllium	NELAP	PA	4/27/2015



The Pennsylvania Department of Environmental Protection Laboratory Accreditation Program is a NELAP recognized Accreditation Body. Customers are urged to verify the laboratory's current accreditation standing.

## Laboratory Scope of Accreditation

Attached to Certificate of Accreditation 011-001 expiration date November 30, 2018. This listing of accredited analytes should be used only when associated with a valid certificate of accreditation.

DEP Laboratory ID: 68-03670

EPA Lab Code: OH00300

TNI Code: TNI02140

(216) 641-6000

PADWIS ID: 03670

### Matrix: Non-Potable Water

Method	Revision	Analyte	Accreditation Type	Primary	Effective Date
EPA 200.8	5.4	Cadmium	NELAP	PA	4/27/2015
EPA 200.8	5.4	Calcium	NELAP	PA	12/1/2015
EPA 200.8	5.4	Chromium	NELAP	PA	4/27/2015
EPA 200.8	5.4	Cobalt	NELAP	PA	4/27/2015
EPA 200.8	5.4	Copper	NELAP	PA	4/27/2015
EPA 200.8	5.4	Iron	NELAP	PA	8/12/2015
EPA 200.8	5.4	Lead	NELAP	PA	4/27/2015
EPA 200.8	5.4	Magnesium	NELAP	PA	8/12/2015
EPA 200.8	5.4	Manganese	NELAP	PA	4/27/2015
EPA 200.8	5.4	Molybdenum	NELAP	PA	4/27/2015
EPA 200.8	5.4	Nickel	NELAP	PA	4/27/2015
EPA 200.8	5.4	Potassium	NELAP	PA	12/1/2015
EPA 200.8	5.4	Selenium	NELAP	PA	4/27/2015
EPA 200.8	5.4	Silver	NELAP	PA	4/27/2015
EPA 200.8	5.4	Sodium	NELAP	PA	12/1/2015
EPA 200.8	5.4	Strontium	NELAP	PA	12/1/2015
EPA 200.8	5.4	Thallium	NELAP	PA	4/27/2015
EPA 200.8	5.4	Tin	NELAP	PA	8/12/2015
EPA 200.8	5.4	Titanium	NELAP	PA	8/12/2015
EPA 200.8	5.4	Vanadium	NELAP	PA	4/27/2015
EPA 200.8	5.4	Zinc	NELAP	PA	4/27/2015
EPA 245.1	3.0	Mercury	NELAP	PA	11/29/2007
EPA 300.0	2.1	Bromide	NELAP	PA	11/22/2010
EPA 300.0	2.1	Chloride	NELAP	PA	11/22/2010
EPA 300.0	2.1	Fluoride	NELAP	PA	11/22/2010
EPA 300.0	2.1	Nitrate as N	NELAP	PA	11/22/2010
EPA 300.0	2.1	Nitrite as N	NELAP	PA	4/27/2015
EPA 300.0	2.1	Orthophosphate as P	NELAP	PA	11/22/2010
EPA 300.0	2.1	Sulfate	NELAP	PA	11/22/2010
EPA 3005	A	Preconcentration under acid	NELAP	PA	11/29/2007
EPA 3010	A	Hot plate acid digestion (HNO <sub>3</sub> + HCl)	NELAP	PA	11/29/2007
EPA 3015		Microwave-assisted acid digestion	NELAP	PA	11/29/2007
EPA 310.2		Alkalinity as CaCO <sub>3</sub>	NELAP	PA	9/20/2012
EPA 350.1		Ammonia as N	NELAP	PA	11/29/2007
EPA 351.2		Kjeldahl nitrogen, total (TKN)	NELAP	PA	11/17/2010
EPA 353.2		Nitrate as N	NELAP	PA	11/29/2007
EPA 353.2		Total nitrate-nitrite	NELAP	PA	11/17/2010
EPA 365.1		Orthophosphate as P	NELAP	PA	12/1/2015
EPA 365.1		Phosphorus, total	NELAP	PA	10/22/2008
EPA 410.4		Chemical oxygen demand (COD)	NELAP	PA	11/29/2007
EPA 420.1		Total phenolics	NELAP	PA	11/29/2017
EPA 445		Chlorophyll A	NELAP	PA	11/22/2010
EPA 6010		Aluminum	NELAP	PA	11/29/2007
EPA 6010		Antimony	NELAP	PA	11/29/2007
EPA 6010		Arsenic	NELAP	PA	11/29/2007



The Pennsylvania Department of Environmental Protection Laboratory Accreditation Program is a NELAP recognized Accreditation Body. Customers are urged to verify the laboratory's current accreditation standing.

## Laboratory Scope of Accreditation

Attached to Certificate of Accreditation 011-001 expiration date November 30, 2018. This listing of accredited analytes should be used only when associated with a valid certificate of accreditation.

DEP Laboratory ID: 68-03670

EPA Lab Code: OH00300

TNI Code: TNI02140

(216) 641-6000

PADWIS ID: 03670

### Matrix: Non-Potable Water

Method	Revision	Analyte	Accreditation Type	Primary	Effective Date
EPA 6010		Barium	NELAP	PA	11/29/2007
EPA 6010		Beryllium	NELAP	PA	11/29/2007
EPA 6010		Cadmium	NELAP	PA	11/29/2007
EPA 6010		Calcium	NELAP	PA	11/29/2007
EPA 6010		Chromium	NELAP	PA	11/29/2007
EPA 6010		Cobalt	NELAP	PA	11/29/2007
EPA 6010		Copper	NELAP	PA	12/31/2007
EPA 6010		Iron	NELAP	PA	11/29/2007
EPA 6010		Lead	NELAP	PA	11/29/2007
EPA 6010		Magnesium	NELAP	PA	11/29/2007
EPA 6010		Manganese	NELAP	PA	11/29/2007
EPA 6010		Molybdenum	NELAP	PA	11/29/2007
EPA 6010		Nickel	NELAP	PA	11/29/2007
EPA 6010		Potassium	NELAP	PA	12/31/2007
EPA 6010		Selenium	NELAP	PA	11/29/2007
EPA 6010		Silver	NELAP	PA	11/29/2007
EPA 6010		Sodium	NELAP	PA	12/31/2007
EPA 6010		Thallium	NELAP	PA	4/15/2014
EPA 6010		Tin	NELAP	PA	11/29/2007
EPA 6010		Titanium	NELAP	PA	11/29/2007
EPA 6010		Vanadium	NELAP	PA	11/29/2007
EPA 6010		Zinc	NELAP	PA	12/31/2007
EPA 7470		Mercury	NELAP	PA	11/29/2007
Enterolert		Enterococci (Enumeration)	NELAP	PA	11/22/2010
Lachat 10-204-00-1X		Cyanide	NELAP	PA	12/1/2015
OIA 1677		Available cyanide	NELAP	PA	11/29/2007
SM 2540 B		Residue, total	NELAP	PA	11/29/2007
SM 2540 C		Residue, filterable (TDS)	NELAP	PA	11/29/2007
SM 2540 D		Residue, nonfilterable (TSS)	NELAP	PA	11/29/2007
SM 2540 F		Residue, settleable	NELAP	PA	11/29/2007
SM 2550 B		Temperature, deg. C	NELAP	PA	10/22/2008
SM 3500-Cr B	20-22	Chromium VI	NELAP	PA	11/29/2007
SM 4500-CN- G		Amenable cyanide	NELAP	PA	11/29/2007
SM 4500-Cl E		Total residual chlorine	NELAP	PA	11/29/2007
SM 4500-Cl- C		Chloride	NELAP	PA	11/19/2012
SM 4500-H+ B		pH	NELAP	PA	11/29/2007
SM 4500-NO2- B		Nitrite as N	NELAP	PA	11/29/2007
SM 4500-Norg B		Kjeldahl nitrogen, total (TKN)	NELAP	PA	10/22/2008
SM 4500-P B		Preliminary treatment of phosphate samples	NELAP	PA	11/13/2013
SM 4500-P E		Orthophosphate as P	NELAP	PA	11/13/2013
SM 5210 B		Biochemical oxygen demand (BOD)	NELAP	PA	11/29/2007
SM 5210 B		Carbonaceous BOD (CBOD)	NELAP	PA	11/29/2007
SM 9222 D		Fecal coliform (Enumeration)	NELAP	PA	11/29/2007
SM 9223 Colilert MPN or QT		E. coli (Enumeration)	NELAP	PA	11/29/2007



The Pennsylvania Department of Environmental Protection Laboratory Accreditation Program is a NELAP recognized Accreditation Body. Customers are urged to verify the laboratory's current accreditation standing.



### Laboratory Scope of Accreditation

Attached to Certificate of Accreditation 011-001 expiration date November 30, 2018. This listing of accredited analytes should be used only when associated with a valid certificate of accreditation.

DEP Laboratory ID: 68-03670      EPA Lab Code: OH00300      TNI Code: TNI02140      (216) 641-6000  
PADWIS ID: 03670

#### Matrix: Non-Potable Water

Method	Revision	Analyte	Accreditation Type	Primary	Effective Date
SM 9223 Colilert MPN or QT		Total coliform (Enumeration)	NELAP	PA	11/22/2010

#### Matrix: Solid and Chemical Materials

Method	Revision	Analyte	Accreditation Type	Primary	Effective Date
EPA 245.1	3.0	Mercury	NELAP	PA	11/22/2010
EPA 3051		Microwave digestion of solids (HNO3 only)	NELAP	PA	11/17/2010
EPA 350.1		Ammonia as N	NELAP	PA	4/27/2015
EPA 351.2		Kjeldahl nitrogen, total (TKN)	NELAP	PA	4/27/2015
EPA 365.1		Phosphorus, total	NELAP	PA	4/27/2015
EPA 6010		Aluminum	NELAP	PA	11/22/2010
EPA 6010		Antimony	NELAP	PA	11/13/2013
EPA 6010		Arsenic	NELAP	PA	11/22/2010
EPA 6010		Barium	NELAP	PA	11/22/2010
EPA 6010		Beryllium	NELAP	PA	11/22/2010
EPA 6010		Cadmium	NELAP	PA	11/22/2010
EPA 6010		Calcium	NELAP	PA	11/22/2010
EPA 6010		Chromium	NELAP	PA	11/22/2010
EPA 6010		Cobalt	NELAP	PA	11/22/2010
EPA 6010		Copper	NELAP	PA	11/22/2010
EPA 6010		Iron	NELAP	PA	11/22/2010
EPA 6010		Lead	NELAP	PA	11/22/2010
EPA 6010		Magnesium	NELAP	PA	11/22/2010
EPA 6010		Manganese	NELAP	PA	11/22/2010
EPA 6010	B	Metals by ICP/AES	NELAP	PA	1/22/2013
EPA 6010		Molybdenum	NELAP	PA	11/22/2010
EPA 6010		Nickel	NELAP	PA	11/22/2010
EPA 6010		Potassium	NELAP	PA	11/22/2010
EPA 6010		Selenium	NELAP	PA	11/22/2010
EPA 6010		Silver	NELAP	PA	11/22/2010
EPA 6010		Sodium	NELAP	PA	11/22/2010
EPA 6010		Strontium	NELAP	PA	4/27/2015
EPA 6010		Thallium	NELAP	PA	11/22/2010
EPA 6010		Tin	NELAP	PA	4/15/2013
EPA 6010		Titanium	NELAP	PA	11/22/2010
EPA 6010		Vanadium	NELAP	PA	11/22/2010
EPA 6010		Zinc	NELAP	PA	11/22/2010



The Pennsylvania Department of Environmental Protection Laboratory Accreditation Program is a NELAP recognized Accreditation Body. Customers are urged to verify the laboratory's current accreditation standing.

## Appendix F

April 3, 2018

Mr. Seth Hothem  
Supervisor of Environmental Assessment  
Northeast Ohio Regional Sewer District  
4747 East 49<sup>th</sup> Street  
Cuyahoga Heights, Ohio 44125

Dear Mr. Hothem:

This letter is to acknowledge that I am responsible for assisting the Northeast Ohio Regional Sewer District's Water Quality and Industrial Surveillance Division in conducting stream habitat assessments using the Qualitative Habitat Evaluation Index for the 2018 Cuyahoga River, Cuyahoga River Tributaries, Euclid Creek Environmental Monitoring Project Study Plans.

It is understood that an Ohio Environmental Protection Agency Level 3 Qualified Data Collector Certification for Stream Habitat Assessment is required to perform these tasks and that I am responsible for maintaining my Level 3 QDC Certification during the term of these Study Plans.

In addition, I have not been convicted nor pleaded guilty to a Violation of Section 2911.21 of the Revised Code (criminal trespass) or a substantially similar municipal ordinance within the previous five years.

Sincerely,



Jonathan Brauer  
Stormwater Inspector  
Northeast Ohio Regional Sewer District  
4747 East 49<sup>th</sup> Street  
Cuyahoga Heights, Ohio, 44125

## Appendix G

## Appendix H

## References

- Chlorophyll a Sampling and Field Filtering Standard Operating Procedure (SOP-EA001-00)
- EPA New England- Region 1. (2005). *Standard operating procedure for calibration and field measurement procedures for the YSI Model 6-Series Sondes and Data Logger (Including: temperature, pH, specific conductance, turbidity, dissolved oxygen, chlorophyll, rhodamine WT, ORP, and barometric pressure)* (7<sup>th</sup> Revision). North Chelmsford, MA: The Office of Environmental Measurement and Evaluation, Ecosystem Assessment- Ecology Monitoring Team.
- Ohio Environmental Protection Agency. (1987a). *Biological criteria for the protection of aquatic life: Volume II. Users manual for biological field assessment of Ohio surface waters* (Updated January 1988; September 1989; November 2006; August 2008; May 2015). Columbus, OH: Division of Water Quality Monitoring and Assessment.
- Ohio Environmental Protection Agency. (1987b). *Biological criteria for the protection of aquatic life: Volume III. Standardized biological field sampling and laboratory methods for assessing fish and macroinvertebrate communities* (Updated September 1989; March 2001; November 2006; August 2008; September 2015 ; June 2015). Columbus, OH: Division of Water Quality Monitoring and Assessment.
- Ohio Environmental Protection Agency. (1997). Draft. *Biological Criteria for the Protection of Aquatic Life: Volume IV: Fish and Macroinvertebrate Indices for Ohio's Lake Erie Nearshore Waters, Harbors, and Lacustraries*. Columbus, OH: Division of Surface Water, Ecological Assessment Unit.
- Ohio Environmental Protection Agency. (2003). *Total Maximum Daily Load for the Lower Cuyahoga River*. Columbus, OH: Division of Surface Water.
- Ohio Environmental Protection Agency. (2006). *Methods for assessing habitat in flowing waters: using the Qualitative Habitat Evaluation Index (QHEI)*. (Ohio EPA Technical Bulletin EAS/2006-06-1). Columbus, OH: Division of Surface Water; Division of Ecological Assessment Section.
- Ohio Environmental Protection Agency. (2010). *Methods of Assessing Habitat in Lake Erie Shoreline Waters Using the Qualitative Habitat Evaluation Index (QHEI) Approach (Version 2.1)*. Columbus, OH: Division of Surface Water.
- Ohio Environmental Protection Agency. (2012). *Ohio 2012 Integrated Water Quality Monitoring and Assessment Report*. Columbus, Ohio: Division of Surface Water.
- Ohio Environmental Protection Agency. (2015a). *Surface Water Field Sampling Manual for water quality parameters and flow*. Columbus, Ohio: Division of Surface Water.

Ohio Environmental Protection Agency. (2015b). *Proposed Stream Nutrient Assessment Procedure*. Columbus, OH: Division of Surface Water, Ohio EPA Nutrients Technical Advisory Group.

Ohio Environmental Protection Agency. (2017). *State of Ohio Water Quality Standards Ohio Administrative Code Chapter 3745-1* (Revision: February 6, 2017). Columbus, OH: Division of Surface Water; Standards and Technical Support Section.