

Level 3 Project Study Plan

2010 Big Creek Environmental Monitoring

(1) Objectives

Big Creek is an urban stream located in Cuyahoga County, Ohio, and is tributary to the Cuyahoga River. Two studies, whose purposes are outlined in Objectives A and B, will be conducted in 2010 on Big Creek in support of the Northeast Ohio Regional Sewer District's (NEORS) Strategic Plan 2009-2013, Strategic Initiatives 1.E: Develop a long-term Environmental Monitoring Program; 4.C: Identify and execute the top 20 stormwater projects; and 4.D: Monitor the impact of executed stormwater projects and develop a strategy to communicate the benefits to the community and adjust the program as necessary.

Objective A:

The overall objective of the study at RM 0.15 on the Main Branch of Big Creek, RM 4.40 on the East Branch, and RM 4.70 on the Ford Branch will be to evaluate the impact of upstream NEORS CSO discharges on the downstream macroinvertebrate community. The study at RM 0.15, the site downstream of the NEORS CSO discharges, is required under Ohio Environmental Protection Agency (EPA) National Pollutant Discharge Elimination System (NPDES) Permit No. 3PA00002*FD. The studies at RM 4.40 on the East Branch and RM 4.70 on the Ford Branch will be conducted to determine the extent to which the downstream macroinvertebrate community at RM 0.15 is impacted by NEORS CSO discharges and other environmental factors. This will be accomplished by comparing the benthic macroinvertebrate data from the upstream sites with data obtained from the downstream site. Benthic chlorophyll *a* samples will also be taken at each site to establish a baseline data set that can be utilized in the future to evaluate the effects of nutrients in CSO discharges on algal and macrophyte production in the stream. The monitoring at RM 4.70 will be conducted only if the NEORS Stormwater program is *not* implemented. Monitoring at RM 0.15 and RM 4.40 will be conducted regardless.

Objective B:

The objective of the study at RM 1.75, 1.55, 1.25, 0.85, and 0.45 on the Chevrolet Branch of Big Creek is to establish a pre-construction baseline data set with regards to water chemistry, habitat quality, chlorophyll *a* production, and health of the fish and macroinvertebrate communities in the stream. The NEORS Engineering department has proposed a project to construct a detention basin on the Chevrolet Branch to reduce the frequency of flooding in the surrounding community.

This branch of Big Creek has also undergone other restoration projects in the past to stabilize severely eroding banks utilizing soil bioengineering techniques, reestablish active floodplains, and add native vegetation in the riparian zones. In 1999, 220 feet of stream was restored at RM 0.6, near Guardian Avenue, utilizing a live crib wall for bank stabilization and a two-stage channel design to establish an active floodplain within the stream channel. In 2003, 400 feet of stream at RM 1.5, near Milligan Avenue, and 520 feet of stream at RM 0.45, near Brookfield Avenue, were restored. Root wads were used for additional bank stabilization at these locations. NEORSD conducted sampling at each location upstream of the restored area, within the restored area, and downstream of the restored area.

The purpose of the data set to be collected in this study is four-fold. Data obtained in this study will provide insight into existing ecological conditions so they can be considered during the design of the detention basin, and evaluate water quality related to detention basins. The data set may also be utilized to determine the effectiveness of past restoration projects through comparison with environmental data previously collected in conjunction with those projects. Additionally, the data set will provide a baseline for post-monitoring in the stream once the detention basins are constructed, facilitating the future assessment of any chemical or biological changes that may have occurred in the stream. This study will be conducted only if the NEORSD Stormwater program *is* implemented.

Monitoring to be Conducted:

During the course of each of the studies, fish communities, benthic macroinvertebrate communities, habitat, chlorophyll *a*, and water chemistry in Big Creek at RM 0.15, 4.40, 4.70, 1.75, 1.55, 1.25, 0.85, and 0.45 will be surveyed. Sites actually sampled will depend on whether the NEORSD Stormwater Program is implemented, as explained above. The results from these surveys will be used to evaluate the overall health of the fish and macroinvertebrate communities through the use of several Ohio EPA indices: the Index of Biotic Integrity (IBI), the Modified Index of Well-Being (MIwb), and the Invertebrate Community Index (ICI). An examination of the individual metrics that comprise these indices will be used in conjunction with water quality data, the Ohio EPA Macroinvertebrate Field Sheet, and Qualitative Habitat Evaluation Index (QHEI) results in order to identify impacts to the communities. Results will also be compared to historic data, where applicable, to show temporal as well as spatial trends. Water chemistry data will also be utilized to determine attainment of each site with applicable Ohio EPA Water Quality Standards (OEPA 2009b). Benthic chlorophyll *a* sample results will be used to establish a baseline data set that can be utilized in the future to evaluate the effects of nutrient levels on algal and macrophyte production.

(2) Point/Nonpoint Sources

Point Sources	Nonpoint Sources
Combined Sewer Overflows	Urban runoff
Storm Sewer Outfalls	Landfills
Sanitary Sewer Overflows	Spills

A map has been provided in Appendix A to show point sources that may be influencing the water quality at each sample location. These point and nonpoint sources may be impacting the health of the fish and benthic macroinvertebrate communities in Big Creek and may be influencing algal and macrophyte production.

(3) Parameters Covered

Fish specimens will be identified to species level, weighed, counted and examined for the presence of external anomalies including DELTs (deformities, eroded fins, lesions and tumors). An Ohio EPA Fish Data Sheet will be completed during each assessment. Quantitative fish sampling is expected to be conducted at all locations.

Macroinvertebrate community assemblages will be collected from each location and transferred to AMT (Ravenna, Ohio)¹ for identification and enumeration. AMT will identify the specimens to the lowest practical taxonomic level and whenever possible, to the level of taxonomy recommended in Ohio EPA's *Biological Criteria for the Protection of Aquatic Life, Volume III* (1987, updated September 30, 1989; November 8, 2006; and August 26, 2008).

The NEORSD Macroinvertebrate Field Sheet (Appendix B) will be completed at each site during sampler retrieval. In addition, stream habitat will be measured by scoring components of the QHEI at all locations, including the substrate, instream cover, channel morphology, riparian zone and bank erosion, pool/glide and riffle/run quality and gradient.

Water chemistry samples will be collected at each electrofishing/macroinvertebrate site unless otherwise noted in Section 5. Appendix C lists the parameters to be tested along with the detection limits and practical quantitation limits. Field measurements for dissolved oxygen, pH, temperature, and conductivity will also be performed. A Surface Water Condition Sampling Field

¹ The Northeast Ohio Regional Sewer District Board of Trustees has approved the District to enter into a contract with AMT, however at the time of this writing the contract has not been fully executed. An amended study plan will be submitted if the District is unable to enter into a contract with AMT and must contract this service with another vendor.

Data Form will be completed at each site during each sampling event (Appendix D).

Benthic chlorophyll *a* samples will be collected at RM 0.15, 4.40, 4.70, 1.75, 1.55, 1.25, 0.85, and 0.45. The chemical and physical water quality parameters to be measured in conjunction with the chlorophyll *a* samples include total phosphorus, dissolved reactive phosphorus, nitrate+nitrite, alkalinity, turbidity, and suspended solids.

(4) Field Collection and Data Assessment Techniques

Sampling will be conducted using longline electrofishing techniques and will consist of shocking all habitat types within a sampling zone, which is 0.15 kilometers in length for the headwater sites and 0.20 kilometers in length for the wading site (RM 0.15), while moving from downstream to upstream. The stunned fish will be collected and put into a live well for later identification. The site at RM 0.15 will be electrofished twice during the field season (June 15 - October 15), and all other sites will be electrofished once during that period.

Fish will be identified to species level, weighed, counted, and examined for the presence of external anomalies including DELTs. Fish easily identified (commonly collected from year to year) will be returned to the site from which they are collected. Subsamples of difficult-to-identify species will be brought back to the laboratory for verification by NEORS Level 3 Fish Qualified Data Collectors (QDC) and, if necessary, sent to The Ohio State University Museum of Biological Diversity for verification by the Curator and/or Associate Curator of Fish. Voucher specimens will be collected as described in section (14). Endangered species and those too large for preservation will not be collected as voucher specimens, but will instead be photographed. Photographed vouchers will include features that permit definitive identification of the particular species.

Fish will be preserved in 37 percent formaldehyde (formalin) in the field, soaked in tap water for 24 to 48 hours after 5 to 7 days, then transferred to solutions of 30 and 50 percent ethanol for 5 to 7 days each and, finally, to 70 percent ethanol for long-term storage. Specimens larger than six inches will be slit along the right side and then soaked in formalin for approximately 10 to 14 days before being transferred to water and solutions of 30, 50 and 70 percent ethanol. Label information will include location (description and coordinates), date, time, collectors' names and sample identification code for each specimen collected.

Macroinvertebrate sampling will be conducted using quantitative and qualitative sampling techniques. Quantitative sampling will include installation of five replicates of a modified Hester-Dendy multi-plate artificial substrate sampler (HD) that is colonized for a six-week period. Multiple HD samplers will be installed at

one or all of the locations in case samplers are lost due to vandalism, burial, etc. Qualitative sampling will be conducted using a D-frame dip net when HD samplers are retrieved. The NEORSD Macroinvertebrate Field Sheet will be completed during each HD retrieval. Voucher specimens will be collected as described in section (14). All other macroinvertebrate community assemblages will be shipped to AMT for identification and enumeration. AMT will identify specimens to the lowest practical taxonomic level and when the condition of the specimen allows, to the level of taxonomy recommended in Ohio EPA's *Biological Criteria for the Protection of Aquatic Life, Volume III* (1987, updated September 30, 1989; November 8, 2006; and August 26, 2008). Voucher specimens will be collected as described in section (14). Stream flow will be measured in feet per second with a Marsh-McBirney FloMate Model 2000 Portable Flow Meter when the HD samplers are installed and retrieved.

A detailed description of the sampling and analysis methods utilized in the fish community and macroinvertebrate surveys, including calculations of the IBI, MIwb, and ICI, can be found in Ohio EPA's *Biological Criteria for the Protection of Aquatic Life, Volumes II* (1987, updated January 1, 1988; November 8, 2006; and August 26, 2008) and *III* (1987, updated September 30, 1989; November 8, 2006; and August 26, 2008).

The QHEI, as described in Ohio EPA's *Methods for Assessing Habitat in Flowing Waters: Using the Qualitative Habitat Evaluation Index (QHEI)* (2006) will be used to assess aquatic habitat conditions at each sample location.

Water chemistry sampling will occur across a variety of flow conditions. Techniques used for water chemistry sampling and chemical analyses will follow the *Manual of Ohio EPA Surveillance Methods and Quality Assurance Practices* (2009a). Chemical water quality samples from each site will be collected with one 4-liter disposable polyethylene cubitainer with disposable polypropylene lid and two 473-mL plastic bottles. All water quality samples will be collected as grab samples. One duplicate sample and one field blank will be collected at a randomly selected site, at the frequency not less than 10% of the total samples collected, for this study plan. The acceptable relative percent difference (RPD) for field duplicate samples will be ≤ 30 percent; results outside this range will trigger further evaluation and investigation into causes for disparities. RPD values above 30 percent, with results less than ten times the practical quantitation limit, will be reviewed on a case-by-case basis to determine if there is any merit for further investigation. Acid preservation of the samples, as specified in the NEORSD laboratory's standard operating procedure for each parameter, will occur in the field. Appendix C lists the analytical method, method detection limit, and practical quantitation limit for each parameter analyzed. Field analyses include the use of either a YSI-556 MPS Multi-Parameter Water Quality Meter or YSI

600XL sonde to measure dissolved oxygen, water temperature, conductivity and pH; and when necessary, a Hanna HI 98129 meter to measure pH. Specifications for these meters have been included in Appendix E.

Benthic chlorophyll *a* samples will be collected one to three times under low-flow conditions. Water chemistry grab samples will be collected at the same time using the methods discussed previously and will be analyzed for nutrients, turbidity, alkalinity and suspended solids.

Where possible, data assessment will include an analysis of temporal and spatial trends in the collected data. Species assemblages and individual metrics will be analyzed. Graphs that show current and historic QHEI, IBI, MIwb, and ICI scores and how these scores compare to attainment status of biocriteria will be prepared. Water chemistry data collected will be compared to Ohio water quality standards to determine whether any excursions from the applicable water quality criteria have occurred. It will also be used to determine any relationships among individual parameters and chlorophyll *a* concentrations. Comparisons between water quality and biological community health will only be made if at least three water quality samples have been collected from that site.

(5) Sampling Locations

The following electrofishing and macroinvertebrate sample locations will be surveyed during the 2010 field season, listed from upstream to downstream on each respective branch. HD and water chemistry collection sites are located near the mid point of each electrofishing zone, indicated by river mile, unless otherwise noted. GPS coordinates are recorded at the downstream end of each electrofishing zone.

Location	Latitude	Longitude	River Mile	Description	Quadrangle	Purpose
Big Creek – Main Branch	N41.4460°	W81.6865°	0.15	Downstream of Jennings Road	Cleveland South	Ohio EPA Permit No. 3PA00002*FD
Big Creek – East Branch	N41.4460°	W81.7540°	4.40	Memphis MetroPark	Lakewood	Evaluate macroinvertebrates, chlorophyll <i>a</i> , and habitat upstream of CSOs
Big Creek – Ford Branch	N41.4230°	W81.8019°	4.70	West 150 th Street	Lakewood	Evaluate macroinvertebrates, chlorophyll <i>a</i> , and habitat upstream of CSOs
Big Creek – Chevy Branch	N41.4287°	W81.7740°	1.75	McGowan Park	Lakewood	Evaluate impacts to fish, macroinvertebrates, chlorophyll <i>a</i> , water chemistry, and habitat
Big Creek – Chevy Branch	N41.4310°	W81.7769°	1.55	Downstream of Milligan Avenue	Lakewood	Evaluate impacts to fish, macroinvertebrates, chlorophyll <i>a</i> , water chemistry, and habitat
Big Creek –	N41.4337°	W81.7816°	1.25	Downstream of	Lakewood	Evaluate impacts to fish,

2010 Big Creek Environmental Monitoring
November 24, 2014

Location	Latitude	Longitude	River Mile	Description	Quadrangle	Purpose
Chevy Branch				Puritas Avenue		macroinvertebrates, chlorophyll <i>a</i> , water chemistry, and habitat
Big Creek – Chevy Branch	N41.4391°	W81.7791°	0.85	Upstream of Kadel Avenue	Lakewood	Evaluate impacts to fish, macroinvertebrates, chlorophyll <i>a</i> , water chemistry, and habitat
Big Creek – Chevy Branch	N41.4438°	W81.7755°	0.45	Downstream of Brookfield Avenue	Lakewood	Evaluate impacts to fish, macroinvertebrates, chlorophyll <i>a</i> , water chemistry, and habitat

(6) Schedule

Electrofishing surveys will be conducted between June 15 and October 15, 2010. Two electrofishing surveys will be conducted at least three to four weeks apart at RM 0.15, and one electrofishing survey each will be conducted at all the other sites. Specific dates have not been scheduled. River flow and weather conditions will be assessed weekly to determine when each electrofishing pass will be conducted.

Artificial substrate samplers will be installed each site in Big Creek once, between June 15 and August 19, 2010, and retrieved six weeks later. Specific dates have not been scheduled. River flow and weather conditions will be assessed weekly to determine when the HD sampler installations and retrievals will be conducted. Qualitative macroinvertebrate sampling will occur during HD retrieval at each of the sites.

QHEI habitat evaluations will be conducted one time between June 15 and October 15, 2010. These evaluations will be conducted around the same time as one of the electrofishing surveys.

Water chemistry samples will be collected a minimum of three times between June 15 and October 15, 2010. RM 0.15 is scheduled to have six water chemistry sampling events, and all of the other sites are scheduled to have five water chemistry sampling events each.

Benthic chlorophyll *a* samples will be collected one to three times between June 15 and October 15, 2010.

(7) QA/QC

Quality assurance and quality control of sampling and analysis methods for habitat, fish, and macroinvertebrate evaluations will follow Ohio EPA's *Biological Criteria for the Protection of Aquatic Life, Volumes II* (1987, updated January 1,

1988; November 8, 2006; and August 26, 2008) and *III* (1987, updated September 30, 1989; November 8, 2006; and August 26, 2008) and *Methods for Assessing Habitat in Flowing Waters: Using the Qualitative Habitat Evaluation Index (QHEI)* (2006).

Electrofishing equipment will be used according to the guidelines listed in the operation and maintenance manual provided by Smith-Root, Inc. Malfunctioning equipment will not be used to collect data. Proper steps will be taken to correct the problem as soon as possible, whether by repairing in the field, at the NEORSD Environmental & Maintenance Services Center, or by contacting the supplier or an appropriate service company.

Subsamples of fish species that are difficult to identify will be brought back to the laboratory for verification by Level 3 Fish Qualified Data Collectors (QDC), and if necessary, sent to The Ohio State University Museum of Biological Diversity for verification by the Curator and/or Associate Curator of Fish. Voucher specimens will be collected as described in section (14). Endangered species and those too large for preservation will not be collected as voucher specimens, but will instead be photographed. Photographed vouchers will include features that permit definitive identification of the particular species.

All macroinvertebrate community assemblages will be collected and shipped to AMT for identification and enumeration. AMT will identify specimens to the lowest practical taxonomic level and when the condition of the specimen allows, to the level of taxonomy recommended in Ohio EPA's *Biological Criteria for the Protection of Aquatic Life, Volume III* (1987, updated September 30, 1989 and November 8, 2006). The AMT QA/QC manual is attached (Appendix F). AMT will return all macroinvertebrate specimens to NEORSD. Voucher specimens for each site will be separated into individual vials and collected as described in section (14). The remaining specimens for each site will be returned in a single container labeled with the site number and collection method and date. All specimens and accompanying chain-of-custody documentation will be retained by NEORSD and stored at the Environmental & Maintenance Services Center for a period not less than ten years.

Water samples obtained for chemical analyses will be collected, labeled and then placed on ice inside the field truck. The field truck will remain locked at all times when not occupied/visible. Sampling activities, including sample time and condition of surface water sampled, will be entered in a field log book and on the Surface Water Condition Sampling Field Data Form. The samples will then be delivered immediately to the NEORSD Analytical Services cooler, after which the door to the cooler will be locked, and the samples will be transferred to the custody of Analytical Services. The NEORSD Analytical Services Quality

Manual and associated Standard Operating Procedures are on file with Ohio EPA. The Quality Assurance Officer at Analytical Service will send updates, revisions and any information on document control to Ohio EPA as needed.

For benthic chlorophyll *a*, three filtrations will be performed for each sample. Each filtration will be submitted as a separate sample. A field filtration blank will be submitted for every 20 samples.

(8) Work Products

Within one year of completion of the project, fish data (species, numbers, weights, pollution tolerances, the incidence of DELT anomalies, IBI and MIwb scores), macroinvertebrate data (types and numbers of macroinvertebrates collected and ICI scores), habitat data (QHEI raw data and scores) and water chemistry results will be submitted to the Ohio EPA. Additionally, reports summarizing, interpreting, graphically presenting and discussing the IBI, MIwb, ICI and QHEI scores, chlorophyll *a* results, and any excursions from water quality standards may be prepared for internal use.

(9) Qualified Data Collectors

The following Level 3 Qualified Data Collectors (QDC) will be involved with this study:

Name	Address	Email Address	Phone Number	QDC Specialty(s)
¹ John W. Rhoades	4747 East 49 th Street Cuyahoga Hts., Ohio 44125	rhoadesj@neorsd.org	216-641-6000	QDC - 008 CWQA/FCB/SHA/ BMB
Catherine Zamborsky	4747 East 49 th Street Cuyahoga Hts., Ohio 44125	zamborskyc@neorsd.org	216-641-6000	QDC - 009 CWQA/SHA
² Seth Hothem	4747 East 49 th Street Cuyahoga Hts., Ohio 44125	hothems@neorsd.org	216-641-6000	QDC - 010 CWQA/FCB/SHA
Kathryn Crestani	4747 East 49 th Street Cuyahoga Hts., Ohio 44125	crestanik@neorsd.org	216-641-6000	QDC - 011 CWQA/SHA
³ Thomas Zablonty	4747 East 49 th Street Cuyahoga Hts., Ohio 44125	zablontyt@neorsd.org	216-641-6000	QDC - 018 CWQA/FCB/SHA
^{4,6} Ronald Maichle	4747 East 49 th Street Cuyahoga Hts., Ohio 44125	maichler@neorsd.org	216-641-6000	QDC - 145 CWQA/SHA/BMB
Francisco Rivera	4747 East 49 th Street Cuyahoga Hts., Ohio 44125	riveraf@neorsd.org	216-641-6000	QDC - 262 CWQA
⁵ Tiffany Moore	8927 Weaver Road Ravenna, Ohio 44266	tiffany@digitaldesignmedia.com	847-945-8010	QDC - 017 BMB
¹ Lead Project Manager		⁴ Benthic Macroinvertebrate Biology (BMB) Project Manager		
² Fish Community Biology (FCB) Project Manager		⁵ Benthic Macroinvertebrate Identification		
³ Stream Habitat Assessment (SHA) Project Manager		⁶ Chemical Water Quality Assessment (CWQA) Project Manager		

The following is a list of persons not qualified as QDCs who may be involved in the project. Prior to the start of sampling, the project managers will explain to each

individual the proper methods for sampling. Sampling will only be completed under the direct observation of a QDC. The lead project manager will be responsible for reviewing all reports and data analysis prepared by qualified personnel prior to completion.

Name	Address	Email Address	Phone Number
Nicholas Barille	4747 East 49 th Street Cuyahoga Hts., Ohio 44125	barillen@neorsd.org	216-641-6000
Joseph Broz	4747 East 49 th Street Cuyahoga Hts., Ohio 44125	brozj@neorsd.org	216-641-6000
Tim Dobriansky	4747 East 49 th Street Cuyahoga Hts., Ohio 44125	dobrianskyt@neorsd.org	216-641-6000
Kyle Frantz	4747 East 49 th Street Cuyahoga Hts., Ohio 44125	frantzk@neorsd.org	216-641-6000
Kristina Granlund	4747 East 49 th Street Cuyahoga Hts., Ohio 44125	granlundk@neorsd.org	216-641-6000
Rae Grant	4747 East 49 th Street Cuyahoga Hts., Ohio 44125	grantr@neorsd.org	216-641-6000
Eric Hinton	4747 East 49 th Street Cuyahoga Hts., Ohio 44125	hintone@neorsd.org	216-641-6000
John Junkin	4747 East 49 th Street Cuyahoga Hts., Ohio 44125	junkinj@neorsd.org	216-641-6000
Jillian Novak	4747 East 49 th Street Cuyahoga Hts., Ohio 44125	novakj@neorsd.org	216-641-6000
Cathy O'Grady	4747 East 49 th Street Cuyahoga Hts., Ohio 44125	Ogradyc@neorsd.org	216-641-6000
Kevin Roff	4747 East 49 th Street Cuyahoga Hts., Ohio 44125	roffk@neorsd.org	216-641-6000
Frank Schuschu	4747 East 49 th Street Cuyahoga Hts., Ohio 44125	schuschuf@neorsd.org	216-641-6000
Wolfram von Kiparski	4747 East 49 th Street Cuyahoga Hts., Ohio 44125	vonkiparskiw@neorsd.org	216-641-6000
Mark Matteson	4747 East 49 th Street Cuyahoga Hts., Ohio 44125	mattesonm@neorsd.org	216-641-6000
Summer Co-op #1	4747 East 49 th Street Cuyahoga Hts., Ohio 44125	To Be Determined	216-641-6000
Summer Co-op #2	4747 East 49 th Street Cuyahoga Hts., Ohio 44125	To Be Determined	216-641-6000
Summer Co-op #3	4747 East 49 th Street Cuyahoga Hts., Ohio 44125	To Be Determined	216-641-6000

- (10) Documentation of approval of project managers and other personnel as level 3 qualified data collectors

See attached (Appendix G).

- (11) Contract laboratory contact information

Any fish that is not positively identified in the field or NEORSD laboratory will be sent to The Ohio State University Museum of Biological Diversity for verification by the Curator and/or Associate Curator of Fish. Fish will be identified to the species level.

Dr. Ted Cavender, Curator of Fish / Mr. Marc Kibbey, Associate Curator of Fish
1315 Kinnear Road, Columbus, Ohio 43212
cavender.1@osu.edu / kibbey.3@osu.edu
614-292-7873

Identification of macroinvertebrates will be completed by AMT. Benthic macroinvertebrates will be identified to the lowest practical level as recommended in Ohio EPA's *Biological Criteria for the Protection of Aquatic Life, Volume III* (1987, updated September 30, 1989, November 8, 2006, and August 26, 2008).

Tiffany Moore, Benthic Specialist (QDC# 017)
AMT
8927 Weaver Road
Ravenna, OH 44266
tiffany@digitaldesignmedia.com
330-626-2310

(12) Copy of ODNR collector's permit

To be submitted electronically when issued to NEORSD by ODNR (Appendix H). Twenty-four hours prior to biological collection, the county ODNR wildlife officer will be contacted by a NEORSD QDC. See table below for contact information for ODNR Wildlife Officers by county. A message may be left instructing: type of sampling; location of sampling; and duration.

County	Contact Person	Phone Number
Cuyahoga County	Hollie J. Fluharty	(330) 245-3033

The most current wildlife officer contact information should always be checked at the following web address:

http://www.dnr.state.oh.us/Home/wild_resourcessubhomepage/about_the_division_landingpage/contactdefault/WildlifeOfficersbyCounty/tabid/7004/Default.aspx

(13) Catalog Statement

A digital photo catalog of all sampling locations will be maintained for 10 years and will include photos of the specific sampling location(s), the riparian zone adjacent to the sampling location(s) and the general land use in the immediate vicinity of the sampling location(s).

Print/Signature: John W. Rhoades / Date: _____

(14) Voucher Specimen Statement

NEORSD will maintain a benthic macroinvertebrate and fish voucher collection which includes two specimens, or appropriate photo vouchers, of each species or taxa collected during the course of biological sampling from any stream within the NEORSD's service area. When benthic macroinvertebrates from multiple surface waters are collected within the same year and identified by the same QDC, one voucher collection will be created to represent the specimens collected from those streams. When fish specimens from multiple surface waters are collected within the same year, one voucher collection will be created to represent the specimens collected from those streams. A separate collection for each sampling event will not be maintained.

NEORSD will provide specimens or photo vouchers to the Director upon request. This collection will be stored at the NEORSD laboratory in the Environmental and Maintenance Services Center.

Print/Signature: John W. Rhoades / Date: _____

(15) Trespassing Statement

I have not been convicted or pleaded guilty to a Violation of section 2911.21 of the Revised Code (criminal trespass) or a substantially similar municipal ordinance within the previous five years.

Print/Signature: John W. Rhoades / Date: _____

Print/Signature: Catherine Zamborsky / Date: _____

Print/Signature: Seth Hothem / Date: _____

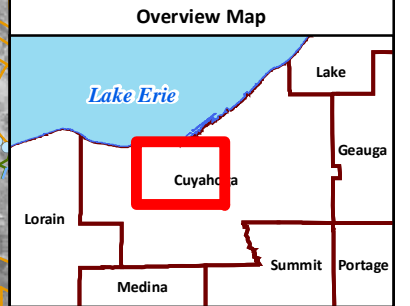
Print/Signature: Kathryn Crestani / Date: _____

Print/Signature: Thomas Zablony / Date: _____

Print/Signature: Ronald Maichle / Date: _____

Print/Signature: Francisco Rivera / Date: _____

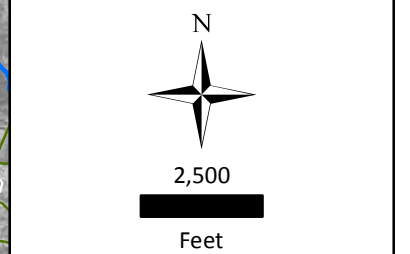
Appendix A



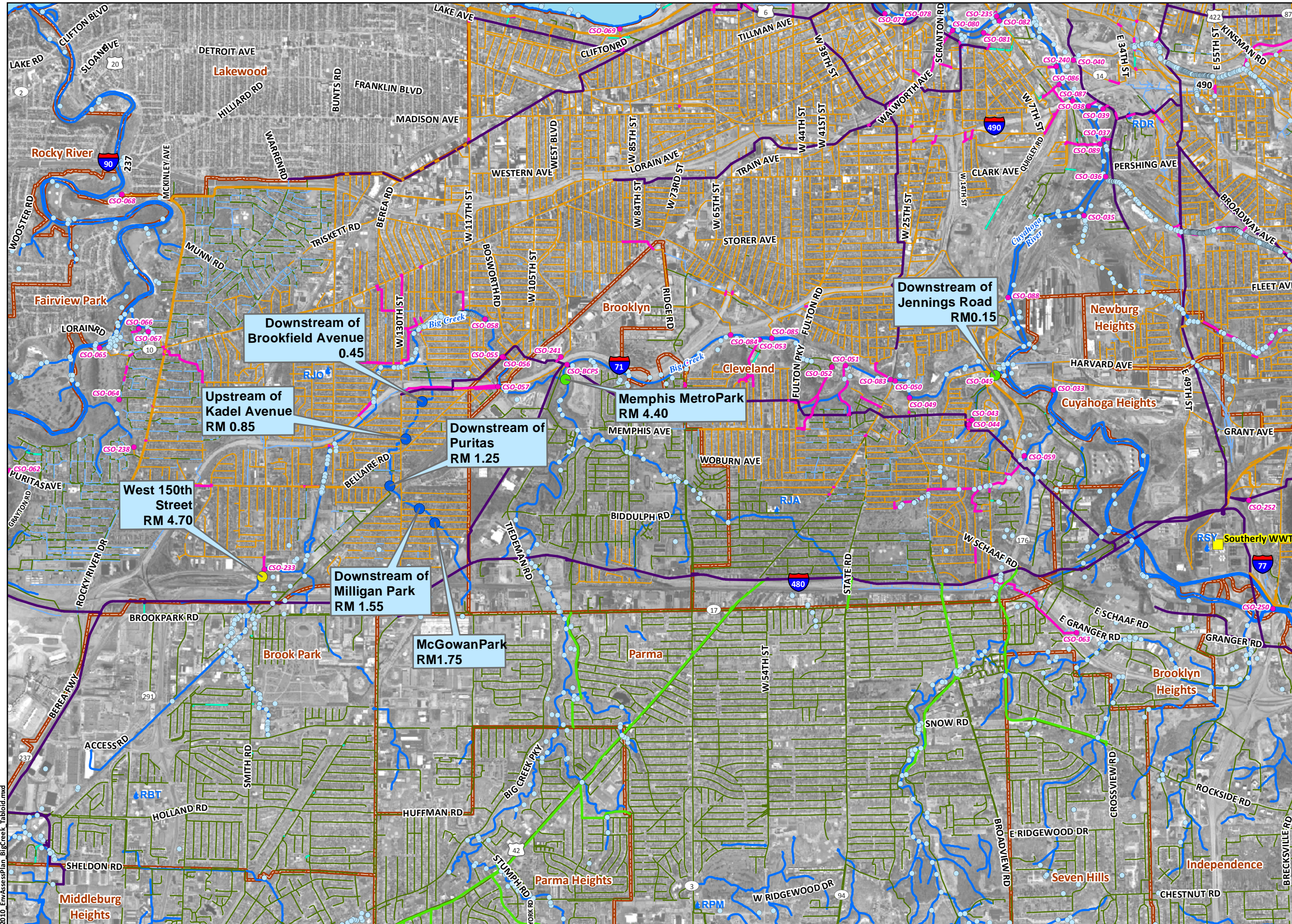
Big Creek 2010 Environmental Assessment

- CSO Outfall
- Outfalls
- ~ Stream
- NEORS Interceptor Sewer
- NEORS Intercommunity Relief Sewer
- NEORS CSO Control Sewer
- NEORS CSO Responsibility Sewer
- Local Combined Sewer
- Local Sanitary Sewer
- Local Storm Sewer
- Local Culverted Stream
- Local Force Main

- Study Sites**
- Downstream of Jennings Road
-Lat.41.4460 Long.-81.6865
 - Memphis MetroPark
-Lat. 41.4460 Long.-81.7540
 - West 150th Street
-Lat 41.4230 Long.-81.8019
 - McGowan Park
-Lat. 41.4287 Long.-81.7740
 - Downstream of Milligan Avenue
-Lat.41.4310 Long.-81.7769
 - Downstream of Puritas Avenue
-Lat. 41.4337 Long. -81.7816
 - Upstream of Kadel Avenue
-Lat. 41.4391 Long. -81.7791
 - Downstream of Brookfield Avenue
-Lat.41.4438 Long.-81.7755



Date: March 2010
Sources: Orthophotos(2008), Street Centerline (2006), Cuyahoga County GIS; Streams(2005), SSURGO; Environmental Assessment Zones (2009), Collection System, NEORS GIS;



This map was compiled by the Northeast Ohio Regional Sewer District ("District") which makes every effort to produce and publish the most current and accurate information possible. This map was created and compiled to serve the District for planning and analysis purposes. The District makes no warranties, expressed or implied, with respect to the accuracy of this map and its use for any specific purpose. The District and its employees expressly disclaim any liability that may result from the use of this map/data. For more information, please contact: Jeffrey Duke, P.E., GISP (Engineering Technical Services) 3900 Euclid Avenue, Cleveland, Ohio 44115 (216-881-6600).

Appendix B

NEORS D Macroinvertebrate Field Sheet

Stream: _____ River Mile: _____ Year: _____

Location Description: _____ Project: _____

Latitude (°N)/Longitude (°W): _____

Hester-Dendy Deployment Information

Install Date: _____ Crew Initials (QDC Circled): _____

Current at HD (fps): _____ Depth (cm): _____ Pictures Obtained: Yes No

Reinstall Date: _____ Crew Initials (QDC Circled): _____

Current (fps): _____ Depth (cm): _____ Reason: _____

Reinstall Date: _____ Crew Initials (QDC Circled): _____

Current (fps): _____ Depth (cm): _____ Reason: _____

Sampling/Retrieval Information

Sampling Method: Hester-Dendy Dipnet Surber Grab Other: _____

Sampling Date: _____ Crew Initials (QDC Circled): _____

HD Condition- Current (fps): _____ Depth (cm): _____ Water Temp: _____ °F / °C

Number of HD Blocks Obtained: _____ Remarks: _____

Disturbed: Yes No Comments: _____

Debris: Yes No Comments: _____

Silt/Solids: None Slight Moderate Heavy

Dipnet- Time Sampled (min): _____ X Number of Crew: _____ = Total (min): _____

Habitats Sampled: Pool Riffle Run Margin Backwater

Samples Analyzed By: _____ QDC #: _____ Date: _____

River Sampling Conditions

Flow Condition:	Flood	Above Normal	Normal	Low	Interstitial	Intermittent	Dry
Current Velocity:	Fast	Moderate	Slow	Non-detect			
Channel Morphology:	Natural	Channelized	Channelized (Recovered)		Impounded		
Bank Erosion:	Extensive	Moderate	Slight	None			
Riffle Development:	Extensive	Moderate	Sparse	Absent			
Riffle Quality:	Good	Fair	Poor		Embedded:	Yes	No
Water Clarity:	Clear	Murky	Turbid		Other:	_____	
Water Color:	None	Green	Brown	Grey	Other:	_____	
Canopy:	Open	75 %	50 %	25 %	Closed	_____	

Comment Section: _____

Physical Characteristics

Substrate Characteristics

	Pool	Units	Riffle	Units	Run	Units
Bedrock						
Boulder						
Rubble						
Coarse Gravel						
Fine Gravel						
Sand						
Silt						
Clay/Hardpan						
Detritus						
Peat						
Muck						
Other						
Macrophytes						
Algae						
Artifacts						
Compaction (F,M,S)						
Depth (Avg)						
Width (Avg)						

Predominant Land Use (Left, Right or Both)

Forest	Urban	Open Pasture
Shrub	Residential/Park	Closed Pasture
Old Field	Mining/Construction	
Rowcrop	Wetland	
Industrial	Other	

Predominant Riparian Vegetation

Left	Right	Type
_____	_____	Large Trees
_____	_____	Small Trees
_____	_____	Shrubs
_____	_____	Grass/Weeds
_____	_____	None

Margin Habitat

Margin Quality:	Good	Fair	Poor
Undercut Banks		Root Mats	
Grass		Water Willow	
Shallows		Caly/Hardpan	
Rip Rap		Bulkhead	
Other	_____		

Biological Characteristics

Riffle:

Predominant Organisms: _____
 Other Common Organisms: _____
 Density: High Moderate Low
 Diversity: High Moderate Low

Run:

Predominant Organisms: _____
 Other Common Organisms: _____
 Density: High Moderate Low
 Diversity: High Moderate Low

Pool:

Predominant Organisms: _____
 Other Common Organisms: _____
 Density: High Moderate Low
 Diversity: High Moderate Low

Margin:

Predominant Organisms: _____
 Other Common Organisms: _____
 Density: High Moderate Low
 Diversity: High Moderate Low

Other Notable Collections: _____

V= Very Abundant; A= Abundant; C= Common; R= Rare; N= None

Overall Amount

/ /	Porifera, Cnidaria, Bryozoa
/ /	Turbellaria, Oligochaeta, Hirudinea
/	Isopoda, Amphipoda
/ /	Decapoda, Hydracarina
	Ephemeroptera
	Baetidae
	Other _____
/	Zygoptera, Anisoptera
	Plecoptera
	Hemiptera
/	Megaloptera, Neuroptera
	Trichoptera
	Hydropsychidae
	Other _____
	Coleoptera
	Elmidae
	Other _____
	Diptera
	Other Dipteran
	Chironomidae
/	Gastropoda, Bivalvia
	Other _____
	Other _____
	Other _____

Appendix C

Parameter	Test	Minimum Detection Limit	Practical Quantitation Limit
Alkalinity	EPA 310.2	2.3 mg/L	10 mg/L
COD	EPA 410.4	5 mg/L	10 mg/L
Hex Chrome	SM 3500 Cr D. ¹	1 µg/L	5 µg/L
Mercury	EPA 245.1	0.016 µg/L	0.050 µg/L
NH3	EPA 350.1	0.002 mg/L	0.010 mg/L
NO2 + NO3	EPA 353.2	0.002 mg/L	0.010 mg/L
NO2	Method 4500-NO ₂ - B. ¹	0.002 mg/L	0.010 mg/L
NO3	EPA 353.2	0.002 mg/L	0.010 mg/L
Soluble-P	EPA 365.1	0.001 mg/L	0.010 mg/L
Total-P	EPA 365.1	0.001 mg/L	0.010 mg/L
Chlorophyll a	EPA 445.0	To be determined	2.0 µg/L
Chloride by IC	EPA 300.0	0.031 mg/L	5.000 mg/L
Sulfate by IC	EPA 300.0	0.061 mg/L	5.000 mg/L
BOD	EPA 405.1 (5 Day)	2 mg/L	
Ag	EPA 200.7	2.8 µg/L	10.00 µg/L
Al	EPA 200.7	26.3 µg/L	100.0 µg/L
As	EPA 200.7	13.9 µg/L	100.0 µg/L
Ba	EPA 200.7	0.70 µg/L	10.00 µg/L
Be	EPA 200.7	0.20 µg/L	1.00 µg/L
Ca	EPA 200.7	25.5 µg/L	275 µg/L
Hardness (calc.)	SM 2340 B	CaCO ₃ mg/L =(2.497*Ca mg/L)+(4.118*Mg mg/L)	
Cd	EPA 200.7	4.6 µg/L	10.00 µg/L
Co	EPA 200.7	2.0 µg/L	10.00 µg/L
Cr	EPA 200.7	4.6 µg/L	10.00 µg/L
Cu	EPA 200.7	1.9 µg/L	10.00 µg/L
Fe	EPA 200.7	3.3 µg/L	10.00 µg/L
K	EPA 200.7	590.0 µg/L	2000.0 µg/L
Mg	EPA 200.7	29.9 µg/L	100.0 µg/L
Mn	EPA 200.7	1.2 µg/L	10.00 µg/L
Mo	EPA 200.7	3.8 µg/L	10.00 µg/L
Na	EPA 200.7	59.5 µg/L	500.0 µg/L
Ni	EPA 200.7	6.2 µg/L	20.00 µg/L
Pb	EPA 200.7	13.4 µg/L	50.00 µg/L
Sb	EPA 200.7	17.0 µg/L	100.0 µg/L
Se	EPA 200.7	36.0 µg/L	75.00 µg/L
Sn	EPA 200.7	13.4 µg/L	50.00 µg/L
Total Metals	EPA 200.7	µg/L =(Cr µg/L)+(Cu µg/L)+(Ni µg/L)+(Zn µg/L)	
Ti	EPA 200.7	1.6 µg/L	10.00 µg/L
TI	EPA 200.7	47.0 µg/L	100.0 µg/L
V	EPA 200.7	4.5 µg/L	10.00 µg/L
Zn	EPA 200.7	1.3 µg/L	10.00 µg/L
TS	SM 2540 B	0.5 mg/L	1.0 mg/L
TSS	SM 2540 D	0.5 mg/L	1.0 mg/L
TDS	SM 2540 C	0.5 mg/L	1.0 mg/L
Turbidity	EPA 180.1	0.1 NTU	0.2 NTU
<i>E. coli</i>	EPA 9213D	1 colony	
Field Parameter	Test	(Value Reported in)	
pH	SM 4500H-B	s.u.	
Conductivity	SM 2510A	µs/cm	
Dissolved Oxygen	SM 4500-0 G	mg/L	
Temperature	SM 2550B	°C	

¹ Standard Methods for the Examination of Water and Wastewater, 19th Edition

Appendix D

NEORSD Surface Water Condition Sampling Field Data Form

Stream: _____ Collectors: _____

Date: _____ Cuyahoga River Daily Mean Discharge*: _____ ft³/sec

Was this sample taken during or following a wet weather event? YES / NO

If yes, when and how much rain occurred? _____

Water Quality Meters Used: _____

Time: _____ Site Location (RM): _____

Flow: Low Normal High Other: _____

HD Status: OK Buried Out of Water H-D was Reset

Unknown (river to high) Missing Not Installed Flow: _____ fps

Clarity: Clear Murky Turbid Other: _____

Color: None Green Brown Other: _____

Field Parameters: Dissolved Oxygen (mg/L): _____ Temperature (°C): _____

Specific Conductance (µmhos/cm): _____ pH (s.u.): _____

General Comments: _____

Field Blank Site / Sample Duplicate Site

Time: _____ Site Location (RM): _____

Flow: Low Normal High Other: _____

HD Status: OK Buried Out of Water H-D was Reset

Unknown (river to high) Missing Not Installed Flow: _____ fps

Clarity: Clear Murky Turbid Other: _____

Color: None Green Brown Other: _____

Field Parameters: Dissolved Oxygen (mg/L): _____ Temperature (°C): _____

Specific Conductance (µmhos/cm): _____ pH (s.u.): _____

General Comments: _____

Field Blank Site / Sample Duplicate Site

Sample ID: (Label Here)

Sample ID:

Sample ID: (Label Here)

Sample ID:

NEORSD Surface Water Condition Sampling Field Data Form

Stream: _____ Collectors: _____

Date: _____ Cuyahoga River Daily Mean Discharge*: _____ ft³/sec

Was this sample taken during or following a wet weather event? YES / NO

If yes, when and how much rain occurred? _____

Water Quality Meters Used: _____

Time: _____ Site Location (RM): _____

Flow: Low Normal High Other: _____

HD Status: OK Buried Out of Water H-D was Reset

Unknown (river to high) Missing Not Installed Flow: _____ fps

Clarity: Clear Murky Turbid Other: _____

Color: None Green Brown Other: _____

Field Parameters: Dissolved Oxygen (mg/L): _____ Temperature (°C): _____

Specific Conductance (µmhos/cm): _____ pH (s.u.): _____

General Comments: _____

Field Blank Site / Sample Duplicate Site

Time: _____ Site Location (RM): _____

Flow: Low Normal High Other: _____

HD Status: OK Buried Out of Water H-D was Reset

Unknown (river to high) Missing Not Installed Flow: _____ fps

Clarity: Clear Murky Turbid Other: _____

Color: None Green Brown Other: _____

Field Parameters: Dissolved Oxygen (mg/L): _____ Temperature (°C): _____

Specific Conductance (µmhos/cm): _____ pH (s.u.): _____

General Comments: _____

Field Blank Site / Sample Duplicate Site

Sample ID: (Label Here)

Sample ID:

Sample ID: (Label Here)

Sample ID:

Appendix E

YSI 556 Meter Specifications

14.1 Sensor Specifications

<i>Dissolved Oxygen</i>	
Sensor Type	Steady state polarographic
Range: % air sat'n mg/L	<ul style="list-style-type: none"> ▪ 0 to 500% air saturation ▪ 0 to 50 mg/L
Accuracy: % air sat'n mg/L	<ul style="list-style-type: none"> ▪ 0 to 200% air saturation: ±2% of the reading or 2% air saturation; whichever is greater ▪ 200 to 500% air saturation: ±6% of the reading ▪ 0 to 20 mg/L: ±2% of the reading or 0.2 mg/L; whichever is greater ▪ 20 to 50 mg/L: ±6% of the reading
Resolution: % air sat'n mg/L	<ul style="list-style-type: none"> ▪ 0.1% air saturation ▪ 0.01 mg/L
<i>Temperature</i>	
Sensor Type:	YSI Precision™ thermistor
Range:	-5 to 45°C
Accuracy:	±0.15°C
Resolution:	0.01°C
<i>Conductivity</i>	
Sensor Type:	4-electrode cell with auto-ranging
Range:	0 to 200 mS/cm
Accuracy:	±0.5% of reading or ±0.001 mS/cm; whichever is greater—4 meter cable ±1.0% of reading or ±0.001 mS/cm; whichever is greater—20 meter cable
Resolution:	0.001 mS/cm to 0.1 mS/cm (range-dependent)
<i>Salinity</i>	
Sensor Type:	Calculated from conductivity and temperature
Range:	0 to 70 ppt
Accuracy:	±1.0% of reading or 0.1 ppt; whichever is greater
Resolution:	0.01 ppt



YSI 650 Multiparameter Display System

Rugged and Reliable Display and Data Logging System



The YSI 650 Multiparameter Display System

Easily log real-time data, calibrate YSI 6-Series sondes, set up sondes for deployment, and upload data to a PC with the feature-packed YSI 650MDS (Multiparameter Display System). Designed for reliable field use, this versatile display and data logger features a waterproof IP-67, impact-resistant case.

- Compatible with EcoWatch® for Windows® data analysis software
- User-upgradable software from YSI's website
- Menu-driven, easy-to-use interface
- Multiple language capabilities
- Graphing feature
- Three-year warranty

Feature-Packed Performance

Battery Life

With the standard alkaline battery configuration of 4 C-cells, the YSI 650 will power itself and a YSI 6600 sonde continuously for approximately 30 hours. Or, choose the rechargeable battery pack option with quick-charge feature.

Optional Barometer

Temperature-compensated barometer readings are displayed and can be used in dissolved oxygen calibration. Measurements can be logged to memory for tracking changes in barometric pressure.

Optional GPS Interface

Designed to NMEA protocol, the YSI 650 MDS will display and log real-time GPS readings with a user supplied GPS interfaced with YSI 6-Series sondes.

Memory Options

Standard memory with 150 data sets, or a high-memory option (1.5 MB) with more than 50,000 data sets; both options with time and date stamp.

Pure
Data for a
Healthy
Planet.®

*A powerful logging
display for your data
collection processes*

*The 650MDS can be
used with YSI sondes
for spot sampling as
well as short-term data
logging.*

*Supply a GPS with
NMEA 0183 protocol,
connect with the YSI
6115 kit, and collect
GPS data along with
water quality data.*

*Upload data from the
650 to EcoWatch® for
instant data viewing.*





To order, or for more information, contact YSI
 +1 937 767 7241
 800 897 4151 (US)
 www.ysi.com

YSI Environmental
 +1 937 767 7241
 Fax +1 937 767 9353
 environmental@ysi.com

YSI Integrated Systems & Services
 +1 508 748 0366
 Fax +1 508 748 2543
 systems@ysi.com

SonTek/YSI
 +1 858 546 8327
 Fax +1 858 546 8150
 inquiry@sontek.com

YSI Gulf Coast
 +1 225 753 2650
 Fax +1 225 753 8669
 environmental@ysi.com

YSI Hydrodata (UK)
 +44 1462 673 581
 Fax +44 1462 673 582
 europe@ysi.com

YSI Middle East (Bahrain)
 +973 1753 6222
 Fax +973 1753 6333
 halsalem@ysi.com

YSI (Hong Kong) Limited
 +852 2891 8154
 Fax +852 2834 0034
 hongkong@ysi.com

YSI (China) Limited
 +86 10 5203 9675
 Fax +86 10 5203 9679
 beijing@ysi-china.com

YSI Nanotech (Japan)
 +81 44 222 0009
 Fax +81 44 221 1102
 nanotech@ysi.com

ISO 9001
ISO 14001

Yellow Springs, Ohio Facility

EcoWatch, Pure Data for a Healthy Planet and Who's Minding the Planet? are registered trademarks of YSI Incorporated. Windows is a registered trademark of the Microsoft Corporation.

©2007 YSI Incorporated
 Printed in USA 0707 E11-03



YSI incorporated
 Who's Minding the Planet?

YSI 650MDS Specifications

Temperature	Operating Storage	-10 to +60°C for visible display -20 to +70°C
Waterproof Rating		IP-67 for both the standard alkaline battery configuration and for the rechargeable battery pack option
Connector		MS-8; meets IP-67 specification
Dimensions	Width Length Weight with batteries	4.7 in, 11.9 cm 9 in, 22.9 cm 2.1 lbs, 0.91 kg
Display		VGA; LCD with 320 by 240 pixels with backlight
Power	Standard Optional	4 alkaline C-cells with detachable battery cover Ni metal hydride battery pack with attached battery cover and 110/220 volt charging system
Communications		RS-232 to all sondes, for data transfer to PC, and for software updates
Optional GPS		NMEA 0183; requires user-supplied GPS and YSI 6115 Y-cable
Backlight		4 LEDs illuminating LCD; user-selectable
Keypad		20 keys, including instrument on/off, backlight on/off, enter, esc, 10 number/letter entry keys, 2 vertical arrow keys, 2 horizontal arrow keys, period key, and minus key
Warranty		3 years

Ordering Information

650-01	Instrument, standard memory
650-02	Instrument, high memory
650-03	Instrument, standard memory, barometer
650-04	Instrument, high memory, barometer
6113	Rechargeable battery pack kit with 110 volt charger and adapter cable
616	Charger, cigarette lighter
4654	Tripod
614	Ultra clamp, C-clamp mount
5081	Carrying case, hard-sided
5085	Hands-free harness
5065	Form-fitted carrying case
6115	Y-cable for interface with user-supplied GPS system



The 650MDS can interface with any YSI sonde for

- spot sampling
- short-term studies
- surface and ground water monitoring
- water level monitoring

Packaged together, the 600QS system includes a 600R conductivity sonde, 650MDS, field cable, and additional sensor options such as pH, dissolved oxygen, ORP, and vented level.



YSI 600XL and 600XLM Sondes

Measure multiple parameters simultaneously

The YSI 600XL and YSI 600XLM compact sondes measure eleven parameters simultaneously:

Temperature	TDS
Conductivity	pH
Specific Conductance	ORP
Salinity	Depth or Level
Resistivity	Rapid Pulse™ DO (% and mg/L)



The YSI 600XL and 600XLM

Connect with Data Collection Platforms

Either sonde can easily connect to the YSI 6200 DAS (Data Acquisition System), YSI EcoNet™ or your own data collection platform, via SDI-12 for remote and real-time data acquisition applications.

Economical Logging System

The YSI 600XLM is an economical logging system for long-term, *in situ* monitoring and profiling. It will log all parameters at programmable intervals and store 150,000 readings. At one-hour intervals, the instrument will log data for about 75 days utilizing its own power source. The 600XL can also be utilized in the same manner with user-supplied external power.

- Either sonde fits down 2-inch wells
- Horizontal measurements in very shallow waters
- Stirring-independent Rapid Pulse® dissolved oxygen sensor
- Field-replaceable sensors
- Easily connects to data collection platforms
- Available with detachable cables to measure depth up to 200 feet
- Compatible with YSI 650 Multiparameter Display System
- Use with the YSI 5083 flow cell for groundwater applications

Pure
Data for a
Healthy
Planet.®

Economical, multiparameter
sampling or logging in a
compact sonde

Sensor performance verified*

The 6820 VZ and 6920 VZ sondes use sensor technology that was verified through the US EPA's Environmental Technology Verification Program (ETV). For information on which sensors were performance-verified, turn this sheet over and look for the ETV logo.





To order, or for more info,
contact YSI Environmental.

+1 937 767 7241
800 897 4151 (US)
www.ysi.com

YSI Environmental
+1 937 767 7241
Fax +1 937 767 9353
environmental@ysi.com

Endeco/YSI
+1 508 748 0366
Fax +1 508 748 2543
systems@ysi.com

SonTek/YSI
+1 858 546 8327
Fax +1 858 546 8150
inquiry@sontek.com

YSI Gulf Coast
+1 225 753 2650
Fax +1 225 753 8669
environmental@ysi.com

YSI Hydrodata (UK)
+44 1462 673 581
Fax +44 1462 673 582
europe@ysi.com

YSI Middle East (Bahrain)
+973 1753 6222
Fax +973 1753 6333
halsalem@ysi.com

YSI (Hong Kong) Limited
+852 2891 8154
Fax +852 2834 0034
hongkong@ysi.com

YSI (China) Limited
+86 10 5203 9675
Fax +86 10 5203 9679
beijing@ysi-china.com

YSI Nanotech (Japan)
+81 44 222 0009
Fax +81 44 221 1102
nanotech@ysi.com

ISO 9001
ISO 14001

Yellow Springs, Ohio Facility

ROX and Rapid Pulse are trademarks and EcoWatch, Pure Data for a Healthy Planet and Who's Minding the Planet? are registered trademarks of YSI Incorporated.

©2007 YSI Incorporated
Printed in USA 0107 E55-01



*Sensors with listed with the ETV logo were submitted to the ETV program on the YSI 6000EIS. Information on the performance characteristics of YSI water quality sensors can be found at www.epa.gov/etv, or call YSI at 800.897.4151 for the ETV verification report. Use of the ETV name or logo does not imply approval or certification of this product nor does it make any explicit or implied warranties or guarantees as to product performance.

YSI incorporated
Who's Minding
the Planet?

YSI 600XL & 600XLM Sensor Specifications

	Range	Resolution	Accuracy
Dissolved Oxygen % Saturation 6562 Rapid Pulse™ Sensor* ET ✓	0 to 500%	0.1%	0 to 200%: ±2% of reading or 2% air saturation, whichever is greater; 200 to 500%: ±6% of reading
Dissolved Oxygen mg/L 6562 Rapid Pulse™ Sensor* ET ✓	0 to 50 mg/L	0.01 mg/L	0 to 20 mg/L: ±0.2 mg/L or 2% of reading, whichever is greater; 20 to 50 mg/L: ±6% of reading
Conductivity* 6560 Sensor* ET ✓	0 to 100 mS/cm	0.001 to 0.1 mS/cm (range dependent)	±0.5% of reading + 0.001 mS/cm
Salinity	0 to 70 ppt	0.01 ppt	±1% of reading or 0.1 ppt, whichever is greater
Temperature 6560 Sensor* ET ✓	-5 to +50°C	0.01°C	±0.15°C
pH 6561 Sensor* ET ✓	0 to 14 units	0.01 unit	±0.2 unit
ORP	-999 to +999 mV	0.1 mV	±20 mV
Depth & Level Medium Shallow Vented Level	0 to 200 ft, 61 m 0 to 30 ft, 9.1 m 0 to 30 ft, 9.1 m	0.001 ft, 0.001 m 0.001 ft, 0.001 m 0.001 ft, 0.001 m	±0.4 ft, ±0.12 m ±0.06 ft, ±0.02 m ±0.01 ft, 0.003 m

* Report outputs of specific conductance (conductivity corrected to 25° C), resistivity, and total dissolved solids are also provided. These values are automatically calculated from conductivity according to algorithms found in *Standard Methods for the Examination of Water and Wastewater* (ed 1989).

YSI 600XL & 600XLM Sonde Specifications

Medium		Fresh, sea or polluted water
Temperature	Operating Storage	-5 to +50°C -10 to +60°C
Communications		RS-232, SDI-12
Software		EcoWatch®
Dimensions	Diameter Length Weight	1.65 in, 4.19 cm 1.65 in, 4.9 cm 16 in, 40.6 cm 21.3 in, 54.1 cm 1.3 lbs, 0.59 kg 1.5 lbs, 0.69 kg
Power	External Internal (600XLM only)	12 V DC 4 AA-size alkaline batteries

YSI model 5083
flow cell and
600XL. This is an
ideal combination
for groundwater
applications.



HI 98129

Combo pH/EC/TDS/Temperature Tester with Low Range EC



Description

The HI 98129 Combo waterproof tester offer high accuracy pH, EC/TDS and temperature measurements in a single tester! No more switching between meters for your routine measurements. The waterproof Combo (it even floats) has a large easy-to-read, dual-level LCD and automatic shut-off. pH and EC/TDS readings are automatically compensated for the effects of temperature (ATC). This technologically advanced tester has a replaceable pH electrode cartridge with an extendable cloth junction as well as an EC/TDS graphite electrode that resists contamination by salts and other substances. This gives these meters a greatly extended life. Your tester no longer needs to be thrown away when the pH sensor is exhausted.

The EC/TDS conversion factor is user selectable as is the temperature compensation coefficient (β). Fast, efficient, accurate and portable, the Combo pH, EC/TDS and temperature tester brings you all the features you've asked for and more!

Specifications

Range	pH	0.00 to 14.00 pH
Range	EC	0 to 3999 $\mu\text{S}/\text{cm}$
Range	TDS	0 to 2000 ppm
Range	Temperature	0.0 to 60.0°C / 32 to 140.0°F
Resolution	pH	0.01 pH
Resolution	EC	1 $\mu\text{S}/\text{cm}$
Resolution	TDS	1 ppm
Resolution	Temperature	0.1°C / 0.1°F
Accuracy	pH	± 0.05 pH
Accuracy	EC/TDS	$\pm 2\%$ F.S.
Accuracy	Temperature	$\pm 0.5^\circ\text{C}$ / $\pm 1^\circ\text{F}$
Temperature Compensation		pH: automatic; EC/TDS: automatic with β adjustable from 0.0 to 2.4% / °C
Calibration	pH	automatic, 1 or 2 points with 2 sets of memorized buffers (pH 4.01 / 7.01 / 10.01 or 4.01 / 6.86 / 9.18)
Calibration	EC/TDS	automatic, 1 point
TDS Conversion Factor		adjustable from 0.45 to 1.00
pH Electrode		HI 73127 (replaceable; included)
Environment		0 to 50°C (32 to 122°F); RH max 100%
Battery Type / Life		4 x 1.5V / approx. 100 hours of continuous use; auto-off after 8 minutes of non-use
Dimensions		163 x 40 x 26 mm (6.4 x 1.6 x 1.0")
Weight		100 g (3.5 oz.)

Appendix F

Aquatic Macroinvertebrate Standard Operating Procedures

Sample Processing

Hester-Dendy samplers (HD) for each site are rinsed and cleaned in a #30 sieve stacked upon a #40 sieve. The resulting #30 and #40 samples are labeled, pre-picked for rare and/or large taxa under 3X magnification and then, if needed, subsampled, using a Folsom sample splitter to achieve more manageable numbers of organisms (minimums of 100 midge larvae, 75 mayflies and 75 caddisflies for #30 sample and minimum of 100 organisms in #40 sample). The resulting macroinvertebrates are then sorted into major orders, using a dissecting scope with at least 10X magnification. The sorted macroinvertebrates are put into labeled vials and preserved in 70% ethanol.

Qualitative samples (QUAL) are not subsampled but are rinsed in a #40 sieve to remove the formalin solution. The sample is then placed in a labeled vial and preserved in 70% ethanol.

Macroinvertebrate Identification

Macroinvertebrates from #30 HD samples and QUAL samples are identified to the lowest practical taxonomic level using OEPA approved references. Exceptions include damaged and immature specimens, which are extrapolated into the counts of the larger, identified specimens. Macroinvertebrates, except for midge larvae, from #40 HD samples are identified, counted and extrapolated into the taxa identified in the corresponding #30 HD sample. Midge larvae from #40 HD samples are also counted and extrapolated into the corresponding #30 HD sample, except for six easily recognizable midge taxa (*Corynoneura spp.*, *Thienemanniella spp.*, *Nilotanytus fimbriatus*, *Labrundinia spp.*, *Stempellina spp.* and *Stempellinella spp.*) If found, these are removed, identified and counted separately from the #40 HD sample and included in the #30 HD sample.

Midge larvae are mounted directly onto labeled slides using CMC-10, which is a clearing agent and a mounting medium. Voucher slides will be ringed with clear nail polish to prevent air fingers from forming.

A voucher collection, consisting of at least two organisms in good condition for each taxon found, will be prepared and will represent all three projects. In the case that only one organism of a certain taxon is found, that organism will be the voucher.

For each site, identifications will be recorded on bench sheets provided by the OEPA. These sheets include identifications, raw counts, extrapolated counts and identification numbers.

Metric Calculations

Invertebrate Community Index (ICI) calculations will be figured by hand for each site containing both a HD sample and a QUAL sample. For samples consisting of only a QUAL sample, a Qualitative Community Tolerance Value (QCTV) score will be calculated by hand and will be based on the most recent Ohio EPA Macroinvertebrate Taxa List, which contains tolerance values.

Supporting Documents References

- Davis, W.S. and T.P. Simon (editors). 1995. Biological Assessment and Criteria: Tools for Water Resource Planning and Decision Making. Lewis Publishers, (Chapter 15 by J.E. DeShon), 217-243.
- Ohio EPA. 1989. Biological Criteria for the Protection of Aquatic Life: Volume III: Standardized Biological Field Sampling and Laboratory Methods for Assessing Fish and Macroinvertebrate Communities, updated 1989, 2006 and 2008.
- Ohio EPA. 1987. Biological Criteria for the Protection of Aquatic Life: Volume II: Users Manual for Biological Field Assessment of Ohio Surface Waters, updated 1988, 2006 and 2008.

Taxonomic References

- Allen, R.K. and G.F. Edmunds. 1962. A revision of the genus *Ephemerella* (Ephemeroptera: Ephemerellidae). IV. The subgenus *Danella*. *Journal of the Kansas Entomological Society* 35:333-338.
- Allen, R.K. and G.F. Edmunds. 1963b. A revision of the genus *Ephemerella* (Ephemeroptera: Ephemerellidae). VI. The subgenus *Serratella* in North America. *Annals of the Entomological Society of America* 56:583-600.
- Bednarik, A.F. and W.P. McCafferty. 1979. Biosystematic revision of the genus *Stenonema* (Ephemeroptera: Heptageniidae). *Canadian Bulletins of Fisheries and Aquatic Sciences* 201:1-73.
- Bode, R.W. 1983. Larvae of North American *Eukiefferiella* and *Tvetenia* (Diptera: Chironomidae). *New York State Museum Bulletin No.* 452:1-40.
- Brown, P. 1972. Aquatic dryopoid beetles (Coleoptera) of the United States. *Biota of Freshwater Ecosystems Identification Manual No. 6*. U.S. Environmental Protection Agency, Washington, D.C.
- Burch, J.B. 1982. Freshwater snails (Mollusca: Gastropoda) of North America. EPA-600/3-82-026. U.S. Environmental Protection Agency, Environmental Monitoring and Support Laboratory, Cincinnati, Ohio.
- Epler, J.H. 2001. Identification manual for the larval Chironomidae (Diptera) of North and South Carolina. A guide to the taxonomy of the midges of the southeastern

United States, including Florida. Special Publication SJ2001-SP13. North Carolina Department of Environmental and Natural Resources, Raleigh, NC, and St. John's River Water Management District, Palatka, FL. 526 pp.

Floyd, M.A. 1995. Larvae of the caddisfly genus *Oecetis* (Trichoptera: Leptoceridae) in North America. *Bulletin of the Ohio Biological Survey* Vol. 10, No. 3. 85 pp.

Glover, J.B. 1996. Larvae of the caddisfly genera *Triaenodes* and *Ylodes* (Trichoptera: Leptoceridae) in North America. *Bulletin of the Ohio Biological Survey* Vol. 11, No. 2. 89 pp.

Glover, J.B. and M.A. Floyd. 2004. Larvae of the genus *Nectopsyche* (Trichoptera: Leptoceridae) in eastern North America, including a new species from North Carolina. *Journal of the North American Benthological Society* 23(3):526-541.

Grodhaus, G. 1987. *Endochironmus* Kieffer, *Tribelos* Townes, *Synendotendipes* new genus, and *Endotribelos* new genus (Diptera: Chironomidae) of the Nearctic region. *Journal of the Kansas Entomological Society* 60(2):167-247.

Hestenes, T.C. and O.A. Saether. 2000. Three new Nearctic *Thienemanniella* Kieffer species with a review of the Nearctic species. *Late 20th Century Research on Chironomidae. An Anthology from the 13th International Symposium on Chironomidae*: pp. 103-127. Shaker Verlag, Aachen.

Hilsenhoff, W.L. 1995. Aquatic insects of Wisconsin. Keys to Wisconsin genera and notes on biology, habitat, distribution and species. Publication Number 3 of the Natural History Museums Council. University of Wisconsin - Madison.

Hitchcock, S.W. 1974. Guide to the insects of Connecticut. Part VII. The Plecoptera or stoneflies of Connecticut. *State Geological and Natural History Survey of Connecticut Bulletin Number 107*:1-262.

Holsinger, J.R. 1972. The freshwater amphipod crustaceans (Gammaridae) of North America. *Biota of Freshwater Ecosystems Identification Manual No. 5*. U.S. Environmental Protection Agency, Washington, D.C.

Jackson, G.A. 1977. Nearctic and Palearctic *Paracladopelma* Harnisch and *Saetheria* n.gen. (Diptera: Chironomidae). *Journal of the Fisheries Research Board of Canada* 34:1321-1359.

Jezerinac, R.F. 1978. Key to the first form male *Procambarus* and *Orconectes* (Decapoda: Cambaridae) of Ohio. Unpublished.

Jezerinac, R.F. 1993. A new subgenus and species of crayfish (Decapoda:Cambaridae) of the genus *Cambarus*, with an amended description of the subgenus

Lacunicambarus. Proceedings of the Biological Society of Washington
106(3):532-544.

- Jezerinac, R.F. and R.F. Thoma. 1984. An illustrated key to the Ohio *Cambarus* and *Fallicambarus* (Decapoda: Cambaridae) with comments and a new subspecies record. *Ohio Journal of Science* 84(3):120-125.
- Johannsen, O.A. 1935. Aquatic diptera. Part II. Orthorrhapha - Brachycera and Cyclorrhapha. Cornell University Agricultural Experiment Station Memoir 177:1-62.
- Klemm, D.J. 1982. Leeches (Annelida: Hirudinea) of North America. EPA-600/3-82-025. U.S. Environmental Protection Agency, Environmental Monitoring and Support Laboratory, Cincinnati, Ohio.
- Lugo-Ortiz, C.R. and W.P. McCafferty. 1998. A new North American genus of Baetidae (Ephemeroptera) and key to Baetis complex genera. *Entomological News* 109(5): 345-353.
- Maschwitz, D.E. and E.F. Cook. 2000. Revision of the Nearctic species of the genus *Polypedilum* Kieffer (Diptera: Chironomidae) in the subgenera *P.* (*Polypedilum*) Kieffer and *P.* (*Uresipedilum*) Oyewo and Saether. *Bulletin of the Ohio Biological Survey. New Series* 12(3): 1-135.
- McCafferty, W.P. 1975. The burrowing mayflies (Ephemeroptera: Ephmeroidea) of the United States. *Transactions of the American Entomological Society* 101:447-504.
- McCafferty, W.P. and R.D. Waltz. 1995. *Labiobaetis* (Ephemeroptera: Baetidae): new status, new North American species, and related new genus. *Ent. News* 106(1): 19-28.
- McCafferty, W.P. and R.D. Waltz. 1990. Revisionary synopsis of the Baetidae (Ephemeroptera) of North and Middle America. *Transactions of the American Entomological Society* 116(4):769- 799.
- Merritt, R.W., K.W. Cummins, and M.B. Berg (editors). 2008. An introduction to the aquatic insects of North America. Fourth Edition. Kendall/Hunt Publishing Company, Dubuque, Iowa 1158 pp.
- Morihara, D.K. and W.P. McCafferty. 1979. The *Baetis* larvae of North America (Ephemeroptera: Baetidae). *Transactions of the American Entomological Society* 105:139-221.
- Needham, J.G., M.J. Westfall, Jr., and M.L. May. 2000. Dragonflies of North America. Revised edition. Scientific Publishers, Gainesville, Florida 939 pp.

- Neunzig, H.H. 1966. Larvae of the genus *Nigronia* Banks (Neuroptera: Corydalidae). *Proceedings of the Entomological Society of Washington* 68(1):11-16.
- Ohio EPA. 2007a. Larval key for the “two tailed” Baetidae of Ohio. Ohio EPA, Division of Surface Water, Ecological Assessment Section, Columbus, Ohio 3 pp.
- Ohio EPA. 2007b. Ohio EPA supplemental keys to the larval Chironomidae (Diptera) of Ohio. Ohio EPA, Division of Surface Water, Ecological Assessment Section, Columbus, Ohio 59 pp plus 8 pp. of figures.
- Oliver, D.R. and M.E. Roussel. 1983. The insects and arachnids of Canada. Part II. The genera of larval midges of Canada (Diptera: Chironomidae). *Agriculture Canada Publication* 1746:1-263.
- Parker, C.R. and G.B. Wiggins. 1987. Revision of the caddisfly genus *Psilotreta* (Trichoptera:Odontoceridae). *Royal Ontario Museum. Life Sciences Contributions* No. 144 55 pp.
- Pennak, R.W. 1989. *Fresh-water invertebrates of the United States. Third Edition.* John Wiley & Sons, New York, New York.
- Pescador, M.L. and L. Berner. 1981. The mayfly family Baetiscidae (Ephemeroptera). Part II. Biosystematics of the genus *Baetisca*. *Transactions of the American Entomological Society* 107:163-228.
- Prather, A.L. and J.C. Morse. 2001. Eastern Nearctic *Rhyacophila* species, with revision of the *Rhyacophila invaria* group (Trichoptera: Rhyacophilidae). *Transactions of the American Entomological Society* 127(1):85-166.
- Resh, V.H. 1976. The biology and immature stages of the caddisfly genus *Ceraclea* in eastern North America (Trichoptera: Leptoceridae). *Annals of the Entomological Society of America* 69(6):1039-1061.
- Roback, S.S. 1977. The immature chironomids of the eastern United States II. Tanypodinae - Tanypodini. *Proceedings of The Academy of Natural Sciences of Philadelphia* 128:55-87.
- Roback, S.S. 1985. The immature chironomids of the eastern United States VI. Penaneurini - genus *Ablabesmyia*. *Proceedings of The Academy of Natural Sciences of Philadelphia* 137(2):153-212.
- Roback, S.S. 1987. The immature chironomids of the eastern United States IX. Pentaneurini - genus *Labrundinia*, with the description of some Neotropical material.

- Proceedings of The Academy of Natural Sciences of Philadelphia 139:159-209.
- Ross, H. 1944. The caddisflies or Trichoptera of Illinois. Bulletin of the Illinois Natural History Survey Division 23(1):1-326.
- Saether, O.A. 1985. A review of the genus *Rheocricotopus* Thienemann & Harnisch, 1932, with the description of three new species (Diptera: Chironomidae). *Spixiana* Supplement 11:59- 108.
- Scheffer, P.W. and G.B. Wiggins. 1986. A systematic study of the Nearctic larvae of the *Hydropsyche morosa* Group (Trichoptera: Hydropsychidae). Royal Ontario Museum. Life Sciences Miscellaneous Publications, Toronto, Ontario 94 pp.
- Schuster, G.A. and D.A. Etnier. 1978. A manual for the identification of the larvae of the caddisfly genera *Hydropsyche* Pictet and *Symphitopsyche* Ulmer in eastern and central North America (Trichoptera: Hydropsychidae). EPA-600/4-78-060. U.S. Environmental Protection Agency, Environmental Monitoring and Support Laboratory, Cincinnati, Ohio.
- Smith, D.G. 2001. Pennak's freshwater invertebrates of the United States. Fourth Edition. Porifera to Crustacea. John Wiley & Sons, Inc., New York, New York. 638 pp.
- Stewart, K.W. and B.P. Stark. 2002. Nymphs of North American stonefly genera (Plecoptera). Second Edition. The Caddis Press, Columbus, Ohio. 510 pp.
- Sun, L and W.P. McCafferty. 2008. Cadistics, classification and identification of the brachycercine mayflies (Insecta: Ephemeroptera: Caenidae). *Zootaxa* 1801:1-239.
- Thorp, J.H. and A.P. Covich (editors). 2001. Ecology and classification of North American freshwater invertebrates. 2nd edition. Academic Press, San Diego, California. 1056 pp.
- Waters, G.T. 1995. A guide to the freshwater mussels of Ohio. Third Edition. The Ohio Department of Natural Resources, Division of Wildlife, Columbus, Ohio.
- Wiederholm, T. (editor). 1983. Chironomidae of the Holarctic region. Keys and diagnoses. Part 1. Larvae. *Entomologica Scandinavica* Supplement No. 19:1-457.
- Wiggins, G.B. 1996. Larvae of the North American caddisfly genera (Trichoptera). Second Edition. University of Toronto Press, Toronto, Canada.
- Yamamoto, T. and G.B. Wiggins. 1964. A comparative study of the North American species in the caddisfly genus *Mystacides* (Trichoptera: Leptoceridae). *Canadian Journal of Zoology* 42: 1105-1126.

"Appendix K

References

- EPA New England- Region 1. (2005). *Standard operating procedure for calibration and field measurement procedures for the YSI Model 6-Series Sondes and Data Logger (Including: temperature, pH, specific conductance, turbidity, dissolved oxygen, chlorophyll, rhodamine WT, ORP, and barometric pressure)*(7th Revision). North Chelmsford, MA: The Office of Environmental Measurement and Evaluation, Ecosystem Assessment- Ecology Monitoring Team.
- Ohio Environmental Protection Agency. (1987a). *Biological criteria for the protection of aquatic life: Volume II. Users manual for biological field assessment of Ohio surface waters* (Updated January 1988; September 1989; November 2006; August 2008). Columbus, OH: Division of Water Quality Monitoring and Assessment.
- Ohio Environmental Protection Agency. (1987b). *Biological criteria for the protection of aquatic life: Volume III. Standardized biological field sampling and laboratory methods for assessing fish and macroinvertebrate communities* (Updated September 1989; March 2001; November 2006; and August 2008). Columbus, OH: Division of Water Quality Monitoring and Assessment.
- Ohio Environmental Protection Agency (OEPA). (1997). Ohio Environmental Protection Agency Authorization to Discharge under the National Pollutant Discharge Elimination System. Permit No. 3PA00002*FD, Part II Section F, for the Northeast Ohio Regional Sewer District, Cleveland, Ohio.
- Ohio Environmental Protection Agency. (2003). *Total maximum daily loads for the lower Cuyahoga River*. Columbus, OH: Division of Surface Water.
- Ohio Environmental Protection Agency. (2005). *Total maximum daily loads for the Euclid Creek Watershed*. Columbus, OH: Division of Surface Water.
- Ohio Environmental Protection Agency. (2006). *Methods for assessing habitat in flowing waters: using the Qualitative Habitat Evaluation Index (QHEI)*. (Ohio EPA Technical Bulletin EAS/2006-06-1). Columbus, OH: Division of Surface Water; Division of Ecological Assessment Section.
- Ohio Environmental Protection Agency. (2008). State of Ohio Draft Water Quality Standards *Ohio Administrative Code Chapter 3745-1*. Columbus, OH: Division of Surface Water, Standards and Technical Support Section.

Ohio Environmental Protection Agency. (2009a). *Ohio EPA manual of surveillance methods and quality assurance practices*. Columbus, OH: Divisions of Surface Water and Environmental Services.

Ohio Environmental Protection Agency. (2009b). State of Ohio Water Quality Standards *Ohio Administrative Code* Chapter 3745-1 (Revision: Adopted July 9, 2009; Effective October 9, 2009). Columbus, OH: Division of Surface Water, Standards and Technical Support Section.