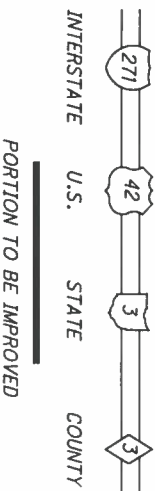
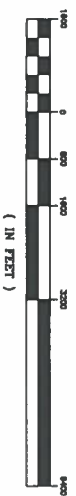




LOCATION PLAN



DESIGN DESIGNATION

CURRENT A.D.T. N/A
 DESIGN YEAR N/A
 D.H.V. N/A
 D. N/A
 T. N/A
 DESIGN SPEED 20 M.P.H. (TOWPATH TRAIL)
 14 M.P.H. (CONNECTOR TRAIL)
 25 M.P.H. (STREETS)
 NONE
 DESIGN EXCEPTION

UNDERGROUND UTILITIES

CONTACT BOTH SERVICES
 CALL TWO WORKING DAYS
 BEFORE YOU DIG
 CALL 1-800-362-2164
 (TOLL FREE)
 OHIO UTILITIES PROTECTION SERVICE
 NON-MEMBERS
 MUST BE CALLED DIRECTLY
 OIL & GAS PRODUCERS PROTECTIVE
 SERVICE CALL: 1-800-925-0988

PLAN PREPARED BY:

CUYAHOGA COUNTY

CUY-TOWPATH TRAIL, STAGE 3

TOWPATH TRAIL
 FROM STEELYARD COMMONS TO LITERARY RD

DECEMBER 8, 2015
 FINAL DESIGN
 REVISED SUBMITTAL

INDEX OF SHEETS:

TITLE SHEET	1				
SCHEMATIC PLAN	2 - 4				
GENERAL NOTES	5 - 10				
DETOUR PLAN	11 - 17				
GENERAL SUMMARY	18				
SUBSUMARIES	19 - 22				
PLAN AND PROFILE (TOWPATH)	23 - 36				
PLAN AND PROFILE (CONNECTOR TRAILS)	37 - 60				
PLAN AND PROFILE (ROADWAYS)	61 - 64				
EARTHWORK PLANS	65 - 76				
GRADING PLANS	77 - 82				
FENCING PLANS	83 - 103				
PAVEMENT JOINT DETAILS	104 - 106				
MISCELLANEOUS DETAILS	107 - 110				
	111 - 115A				
		STORM SEWER PLAN			116
		STORM SEWER PROFILES			117 - 119
		DRAINAGE DETAILS			120 - 122
		CITY OF CLEVELAND SEWER DETAILS			122A - 122F
		UTILITY PLANS			123 - 139A
		LIGHTING PLANS			140 - 194
		DEMO/SITE/LANDSCAPING GENERAL SUMMARY			196 - 199
		DEMOLITION PLANS			200 - 222
		LANDSCAPING PLANS			223 - 269
		STORM WATER POLLUTION PREVENTION			270 - 284
		RETAINING WALL AND REINFORCED SLOPE PLANS			284A - 296
		STRUCTURES (OVER 20' SPAN)			297 - 304
		W. 7TH STREET BRIDGE			306 - 309
		JEFFERSON AVENUE BRIDGE			310 - 337A
		STRUCTURES (OVERLOOK STRUCTURES)			

NOT USED: 23, 159, 195

ENGINEERS SEAL:	ENGINEERS SEAL:	ENGINEERS SEAL:	ENGINEERS SEAL:
MICHAEL BAKER INTERNATIONAL	MICHAEL BAKER INTERNATIONAL	ENVIRONMENTAL DESIGN GROUP	BRANDSTETTER CARROLL, INC.
ROADWAY TRAIL PLANS	STRUCTURAL PLANS	LANDSCAPE PLANS	ARCHITECTURAL PLANS
SIGNED: _____	SIGNED: _____	SIGNED: _____	SIGNED: _____
DATE: _____	DATE: _____	DATE: _____	DATE: _____

NUMBER	DATE	NUMBER	DATE
CR-1	04-14-2008	164-ME	07-08-2008
CONC 1	04-14-2008	A-503	06-21-2012
CD-1	04-14-2008	A-605	06-21-2012
MH-1	07-08-2008	A-695	10-01-1997
CB-1	07-08-2008	MB-1C	01-15-1998
PR-1	07-08-2008	146-ME	07-08-2008

NUMBER	DATE	NUMBER	DATE
832	01-17-2014	1041	01-18-2013
836	01-18-2013	1055	01-18-2013
840	07-17-2015	1073	04-16-2010
863	10-17-2014	1083	10-17-2014
1035	01-18-2013		

RAILROAD INVOLVEMENT	CONSTRUCTION PROJECT NO.	PID NO.	FEDERAL PROJECT NO.
N/A		84112	

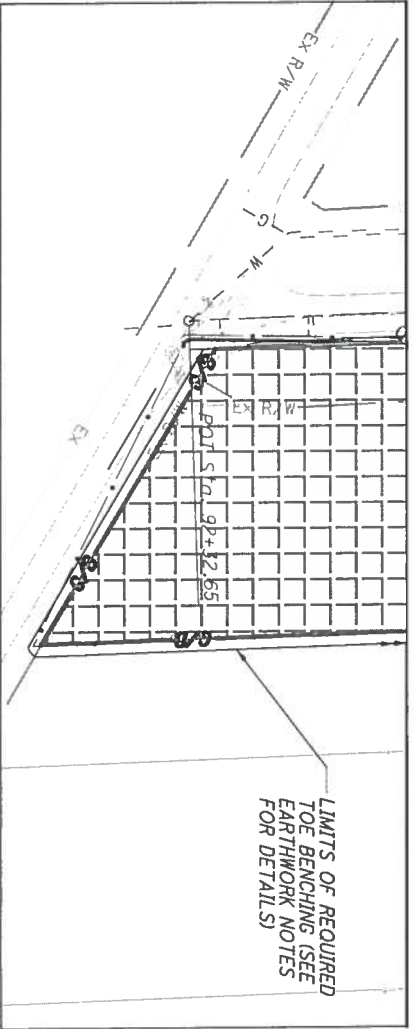
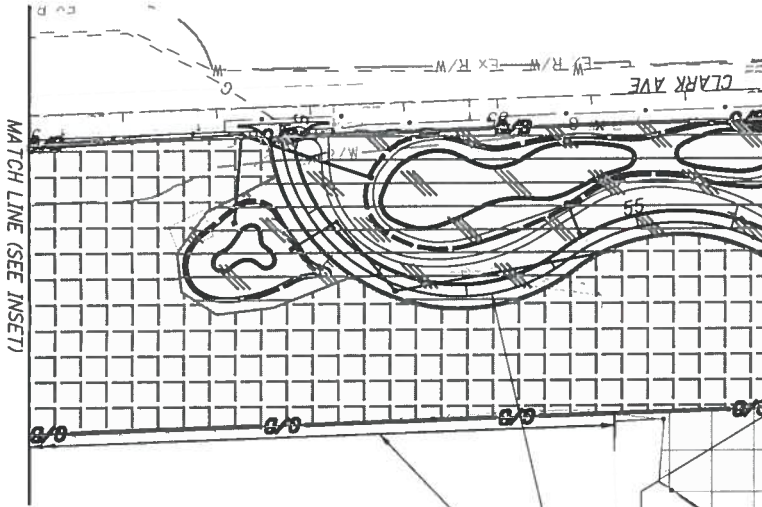
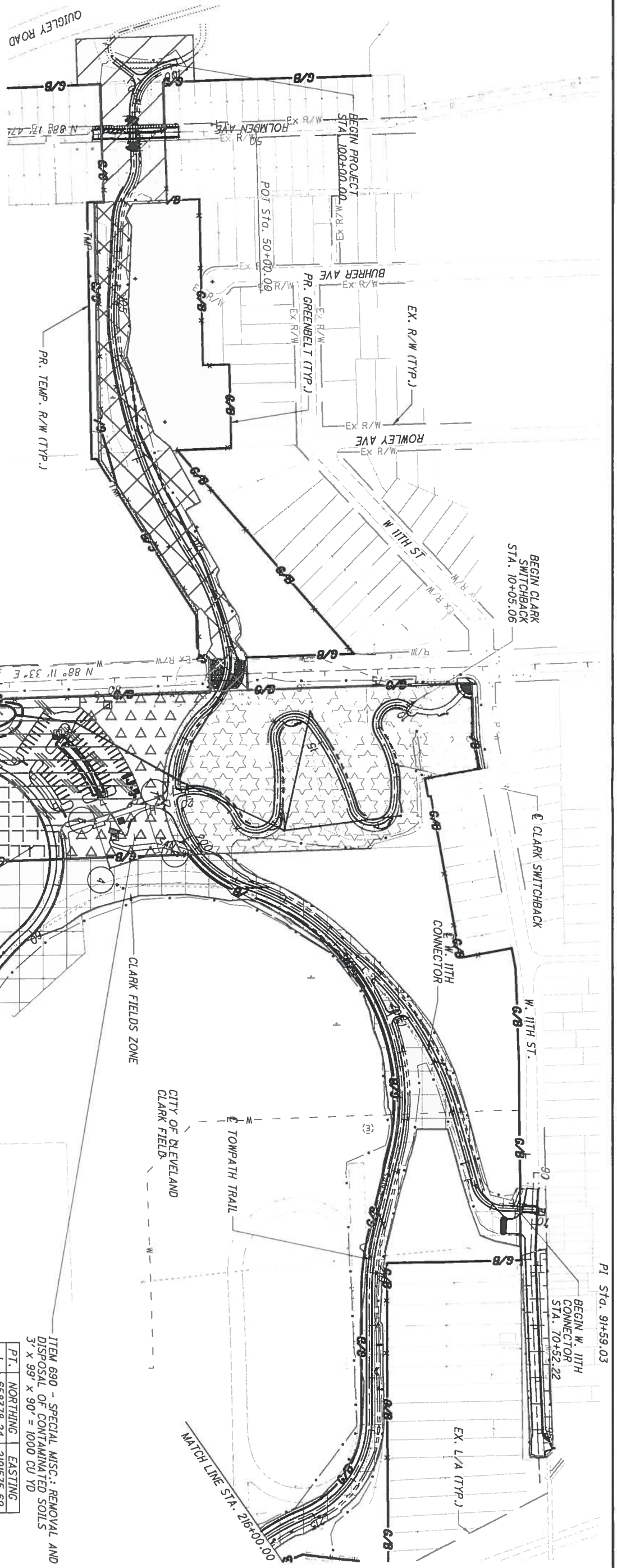
Michael Baker INTERNATIONAL
 1228 EUCLID AVENUE, SUITE 1050
 CLEVELAND, OHIO 44115

Environmental Design Group
 450 Genl. Street
 Akron, OH 44311
 Phone: 330.375.1390
 Fax: 330.375.1390
 www.environmentalgroup.com

BRANDSTETTER CARROLL INC.
 ARCHITECTS, ENGINEERS, PLANNERS
 912 W. 24th Street
 Cleveland, OH 44115
 www.brandstettercarroll.com

LEGEND

	PR. TOWPATH TRAIL GREENBELT		TRAILHEAD EARTHWORK ZONE (B)
	TEMPORARY EASEMENT		TRAILHEAD EARTHWORK ZONE (C)
	EXISTING RIGHT-OF-WAY		TRAILHEAD EARTHWORK ZONE (D)
	HOLMDEN EARTHWORK ZONE		CLARK FIELD EARTHWORK ZONE
	HILLSIDE EARTHWORK ZONE		WEST 11TH EARTHWORK ZONE
	TRAILHEAD EARTHWORK ZONE (A)		



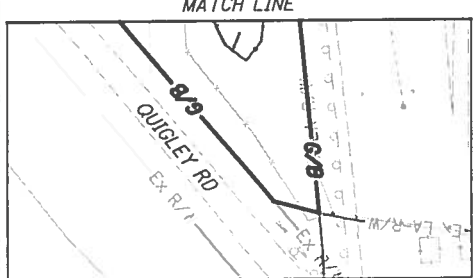
ITEM 690 - SPECIAL MISC.: REMOVAL AND DISPOSAL OF CONTAMINATED SOILS
3' x 99' x 90' = 1000 CU YD

PT.	NORTHING	EASTING
1	658378.24	2191575.69
2	658463.95	2191548.24
3	658408.43	2191659.97
4	658494.14	2191642.53

FOR GRADING DETAILS, SEE SHEETS 83 - 103

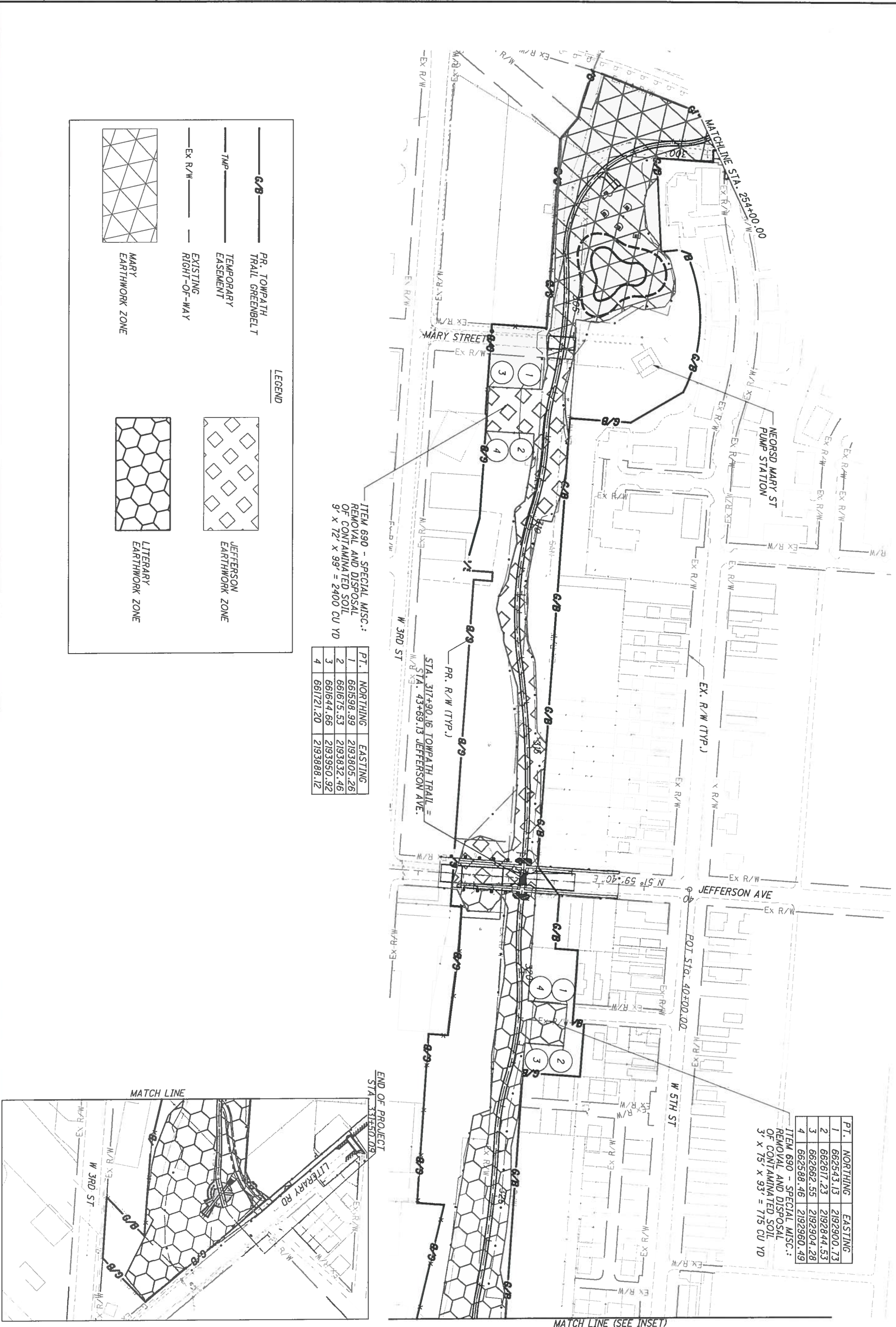
LEGEND

	PR. TOWPATH TRAIL GREENBELT
	TEMPORARY EASEMENT
	EXISTING RIGHT-OF-WAY
	CLARK FIELD EARTHWORK ZONE
	W. 7TH ST. EARTHWORK ZONE
	BLUFFS EARTHWORK ZONE
	MARY EARTHWORK ZONE
	CLARK FIELDS PERMANENT STOCKPILE AREA (SEE EARTHWORK NOTES)



FOR GRADING DETAILS, SEE SHEETS 83 - 103





ITEM 690 - SPECIAL MISC.:
REMOVAL AND DISPOSAL
OF CONTAMINATED SOIL
9' x 72' x 99' = 2400 CU YD

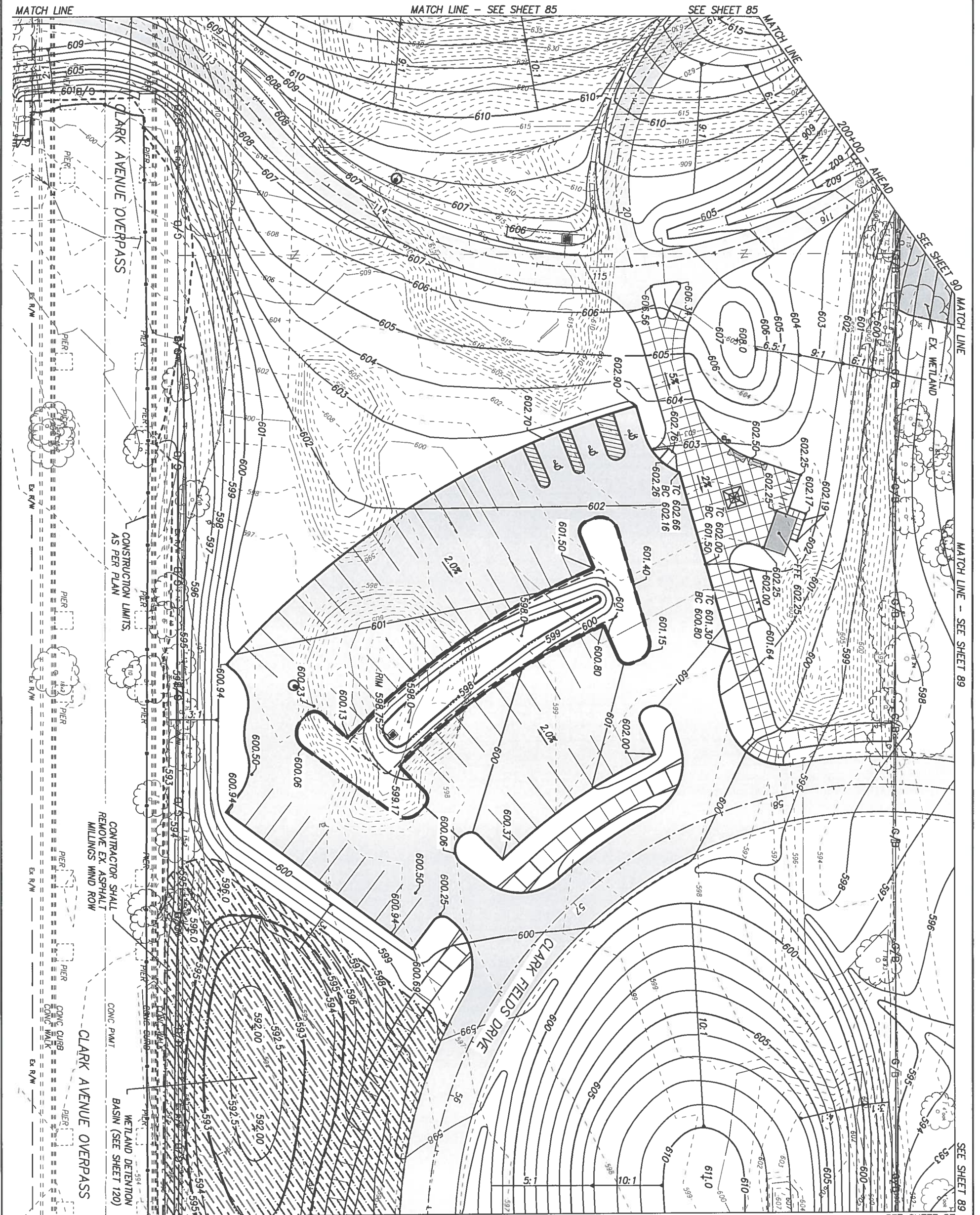
PT.	NORTHING	EASTING
1	661598.99	2193805.26
2	661675.53	2193832.46
3	661644.66	2193950.92
4	661721.20	2193888.12

ITEM 690 - SPECIAL MISC.:
REMOVAL AND DISPOSAL
OF CONTAMINATED SOIL
3' x 75' x 93' = 775 CU YD

PT.	NORTHING	EASTING
1	662543.13	2192900.73
2	662617.23	2192844.53
3	662662.55	2192904.28
4	662588.46	2192960.49

FOR GRADING DETAILS, SEE SHEETS 83 - 103

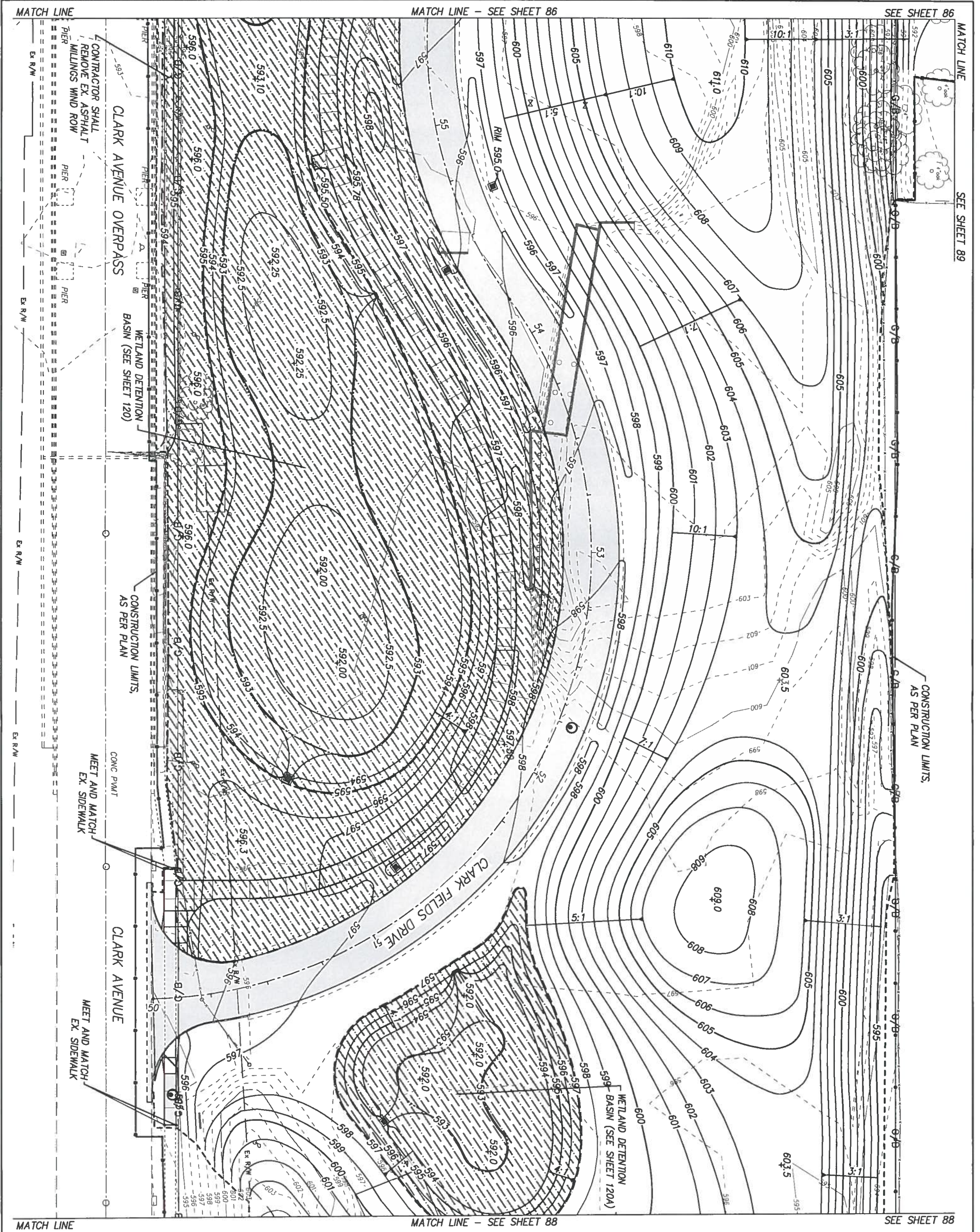




NOTES:

1. SEE PLAN & PROFILE SHEETS FOR STORM SEWERS, STRUCTURES, CLARK FIELD DRIVE ALIGNMENT AND TRAIL ALIGNMENT.
2. ALL SPOT ELEVATIONS SHOWN ARE BOTTOM OF CURB PAYMENT ELEVATION. SEE SHEET 260 FOR MORE INFORMATION ABOUT CROSSWALK RAMPS.
3. SEE SHEETS 233-242 FOR MORE INFORMATION ABOUT LAYOUT AND AMENITIES.
4. LIMITS OF PROPOSED GEOSYNTHETIC CLAY LINER. SEE DRAINAGE DETAILS AND EARTHWORK NOTES. PAID AS SPECIAL. GEOTEXTILE FABRIC.

	CALCULATED TR,CR	<p>10 HORIZONTAL SCALE IN FEET</p>
	CHECKED KL,GN	



- NOTES:**
1. SEE PLAN & PROFILE SHEETS FOR STORM SEWERS, STRUCTURES, CLARK FIELD DRIVE ALIGNMENT AND TRAIL ALIGNMENT.
 2. SEE SHEET 260 FOR MORE INFORMATION ABOUT CROSSWALK RAMPS.
 3. SEE SHEETS 233-242 FOR MORE INFORMATION ABOUT LAYOUT AND AMENITIES.
- LIMITS OF PROPOSED GEOSYNTHETIC CLAY LINER. SEE DRAINAGE DETAILS AND EARTHWORK NOTES. PAID AS SPECIAL - GEOTEXTILE FABRIC.

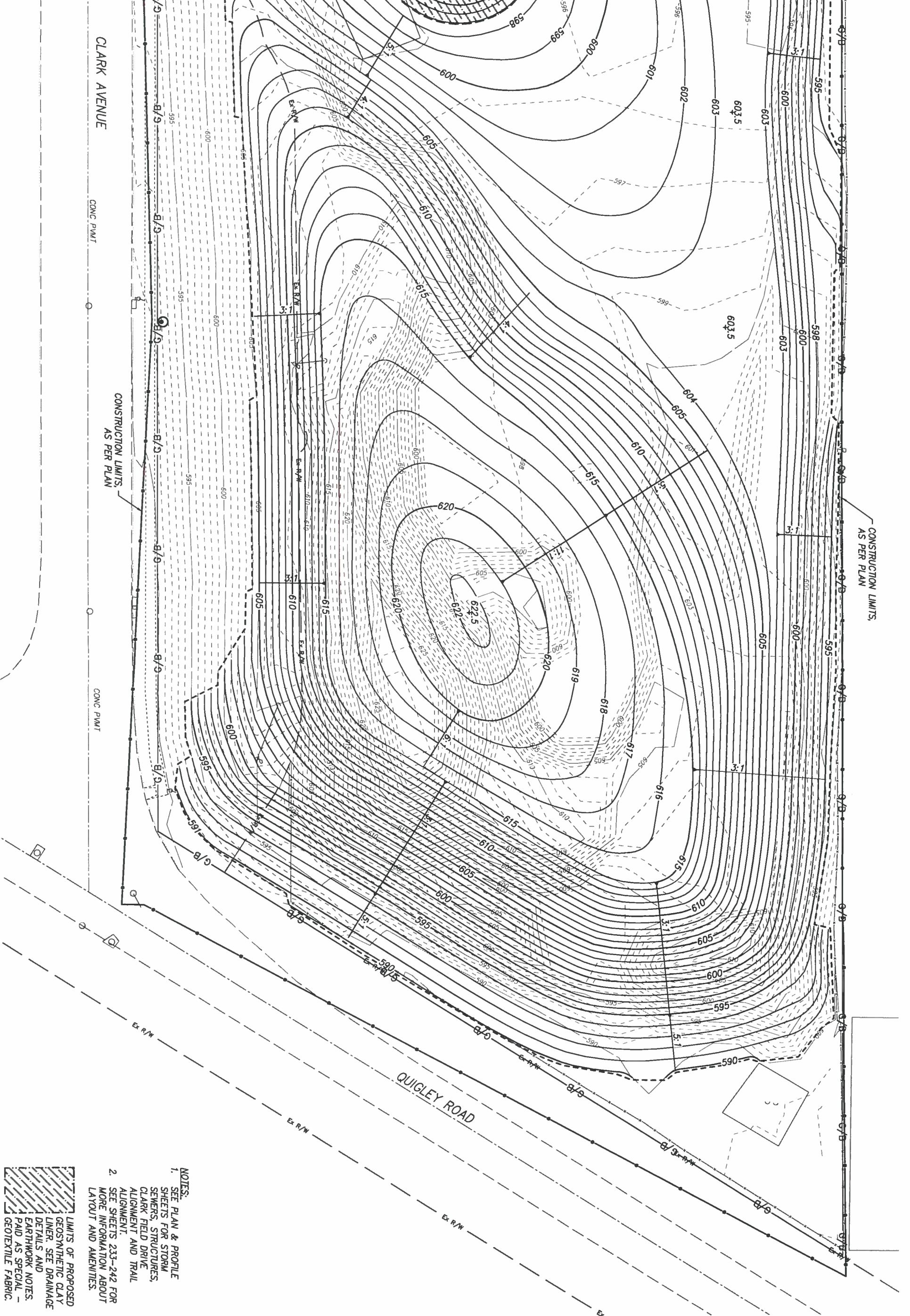
CUY-TOWPATH TRAIL, STAGE 3


**GRADING PLAN
CLARK AVE TRAILHEAD AT CLARK FIELDS DRIVE**

CALCULATED
TR,CR
CHECKED
KL,GN



MATCH LINE MATCH LINE - SEE SHEET 87 SEE SHEET 87



- NOTES:
1. SEE PLAN & PROFILE SHEETS FOR STORM SEWERS, STRUCTURES, CLARK FIELD DRIVE ALIGNMENT AND TRAIL ALIGNMENT.
 2. SEE SHEETS 233-242 FOR MORE INFORMATION ABOUT LAYOUT AND AMENITIES.
-  LIMITS OF PROPOSED GEOSYNTHETIC CLAY LINER. SEE DRAINAGE DETAILS AND EARTHWORK NOTES. PAID AS SPECIAL - GEOTEXTILE FABRIC.

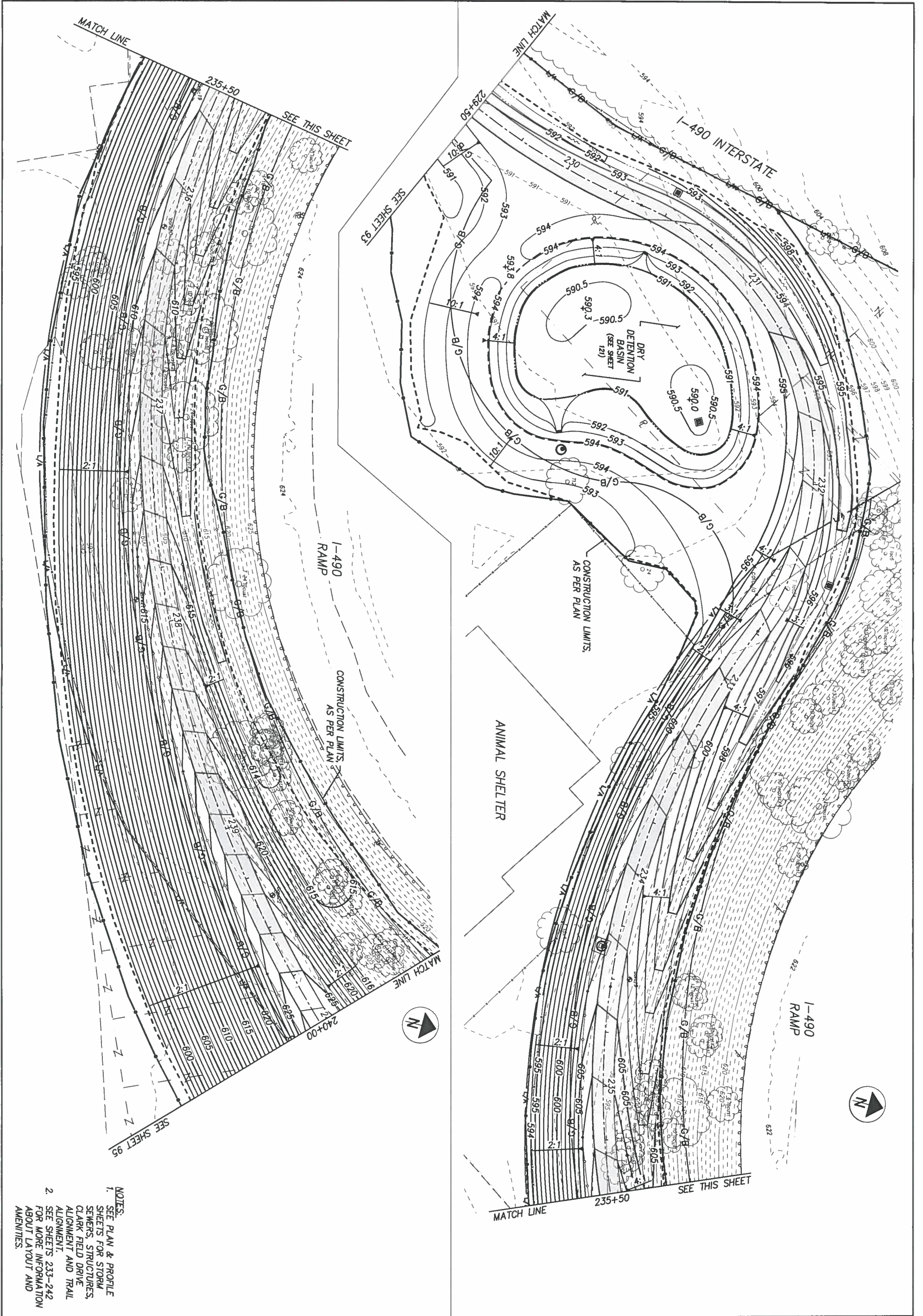
CUY-TOWPATH TRAIL, STAGE 3

**GRADING PLAN
CLARK AVE TRAILHEAD AT CLARK AVE & QUIGLEY RD**

CALCULATED TR,CR
 CHECKED KL,GN

 HORIZONTAL SCALE IN FEET





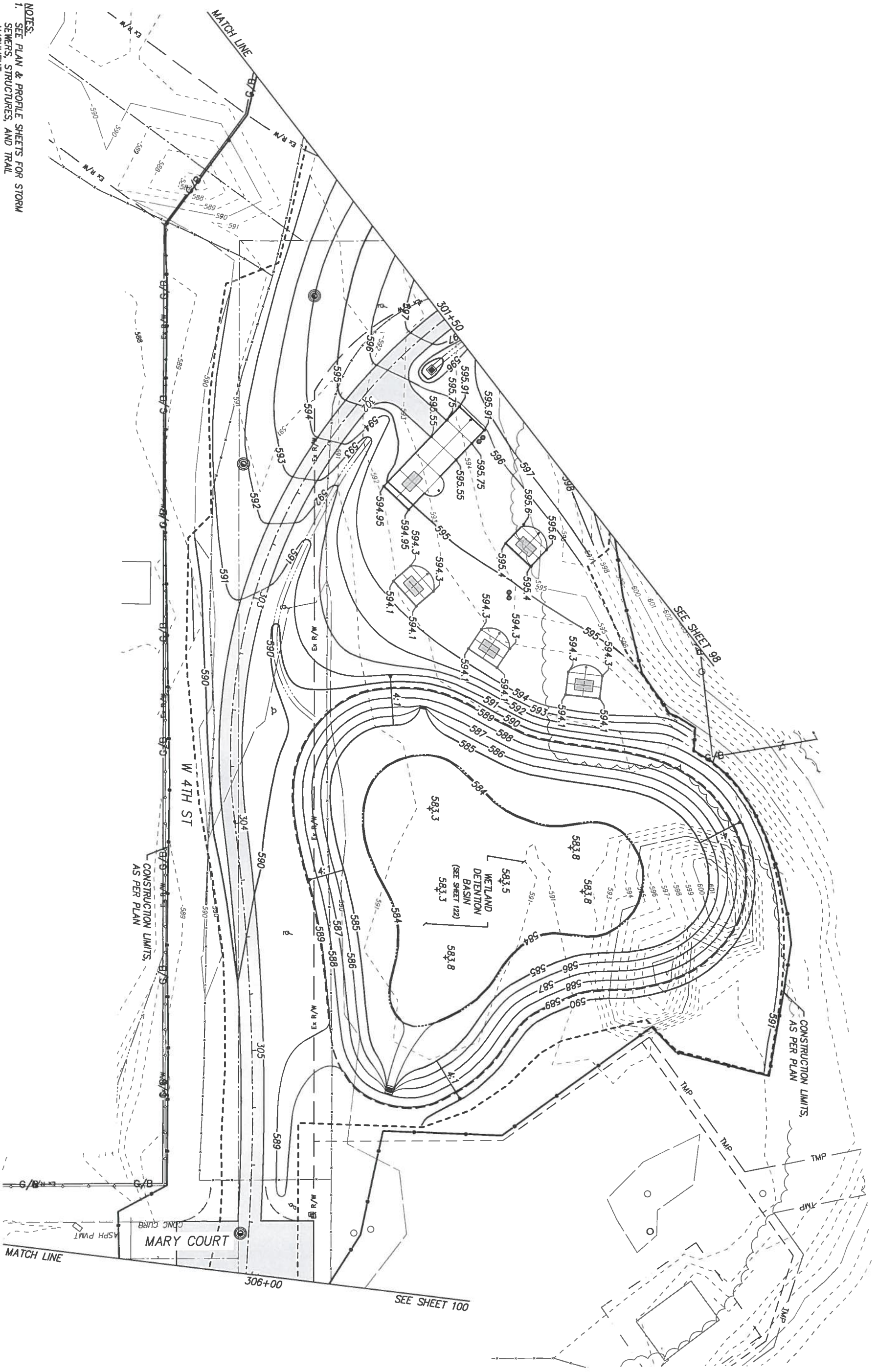
- NOTES:
1. SEE PLAN & PROFILE SHEETS FOR STORM SEWERS, STRUCTURES, CLARK FIELD DRIVE ALIGNMENT AND TRAIL ALIGNMENT.
 2. SEE SHEETS 233-242 FOR MORE INFORMATION ABOUT LAYOUT AND AMENITIES.

CUY-TOWPATH TRAIL, STAGE 3

GRADING PLAN
 STA 229+50 TO STA 240+00 - CLARK FIELDS

CALCULATED TR,CR	0 20 40
CHECKED KL,GN	10
HORIZONTAL SCALE IN FEET	

- NOTES:
1. SEE PLAN & PROFILE SHEETS FOR STORM SEWERS, STRUCTURES, AND TRAIL ALIGNMENT.
 2. SEE SHEETS 233-242 FOR MORE INFORMATION ABOUT LAYOUT AND AMENITIES.



	CALCULATED TR,CR	0 10 20 HORIZONTAL SCALE IN FEET
	CHECKED KL,GN	

CUY-TOWPATH TRAIL, STAGE 3

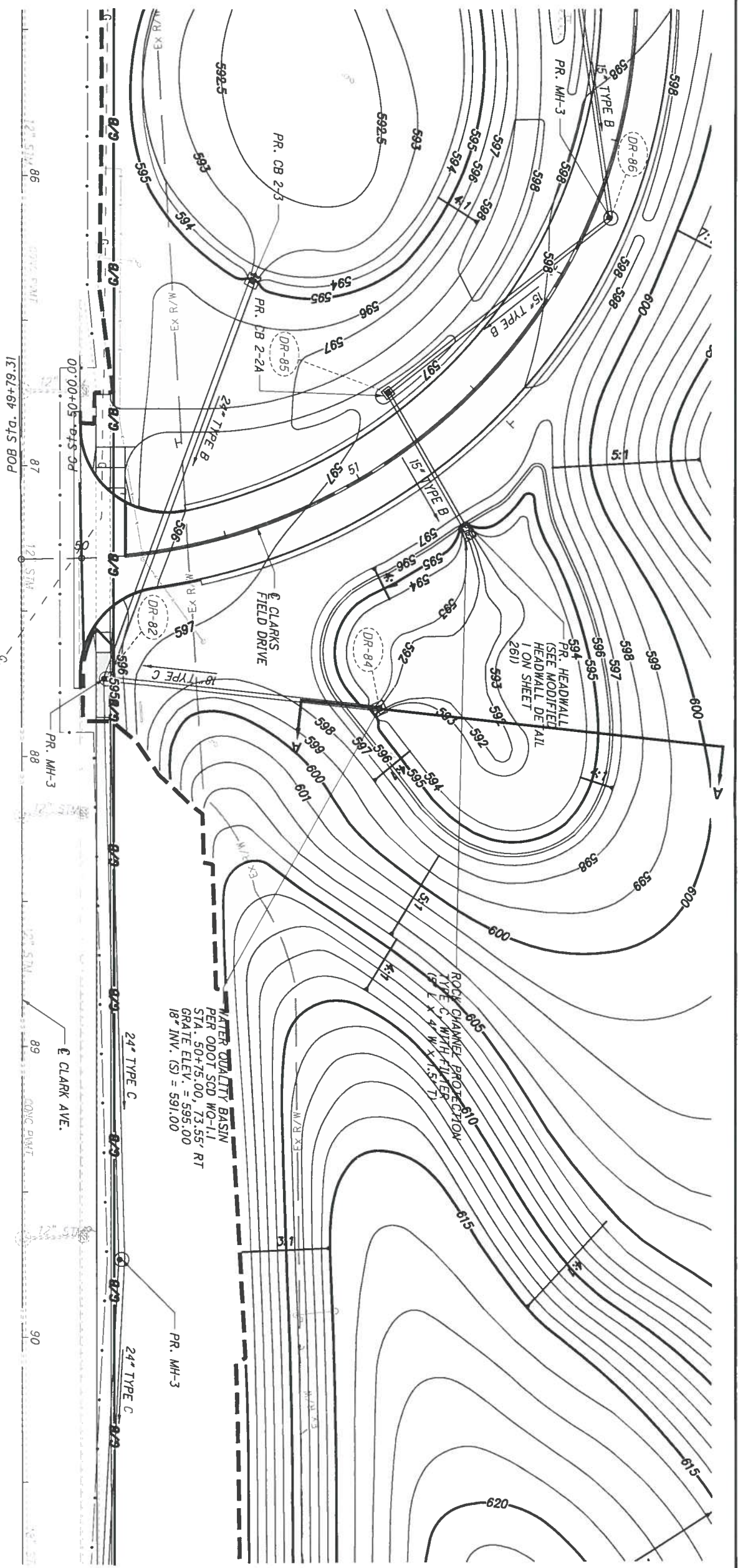
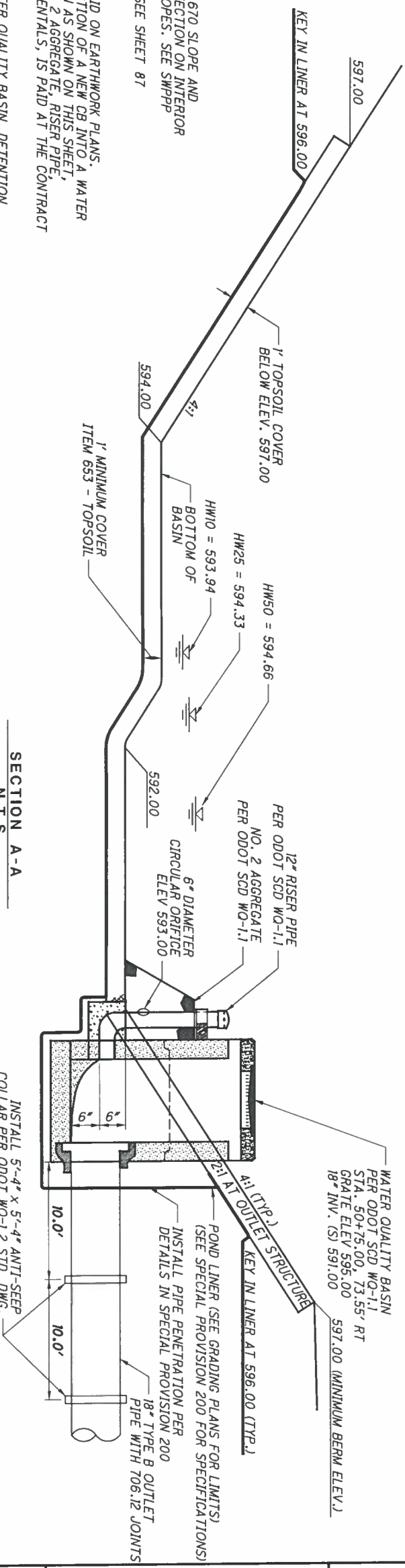
GRADING PLAN
STA 301+50 TO STA 306+00 - W 4TH ST & MARY CT

99
337

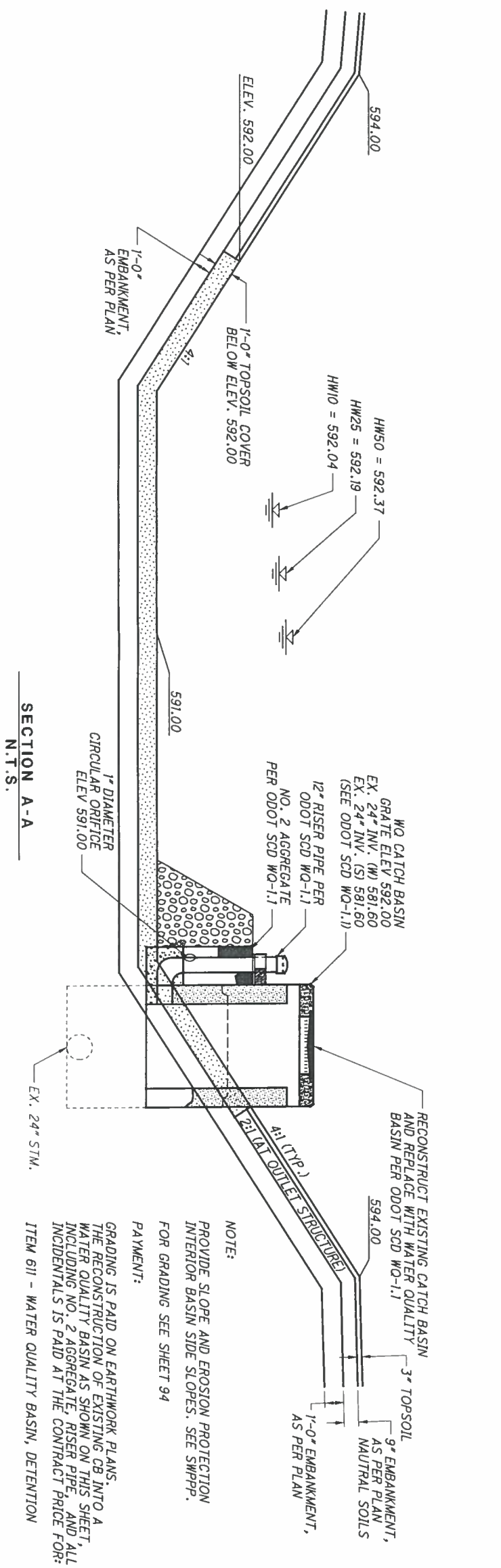
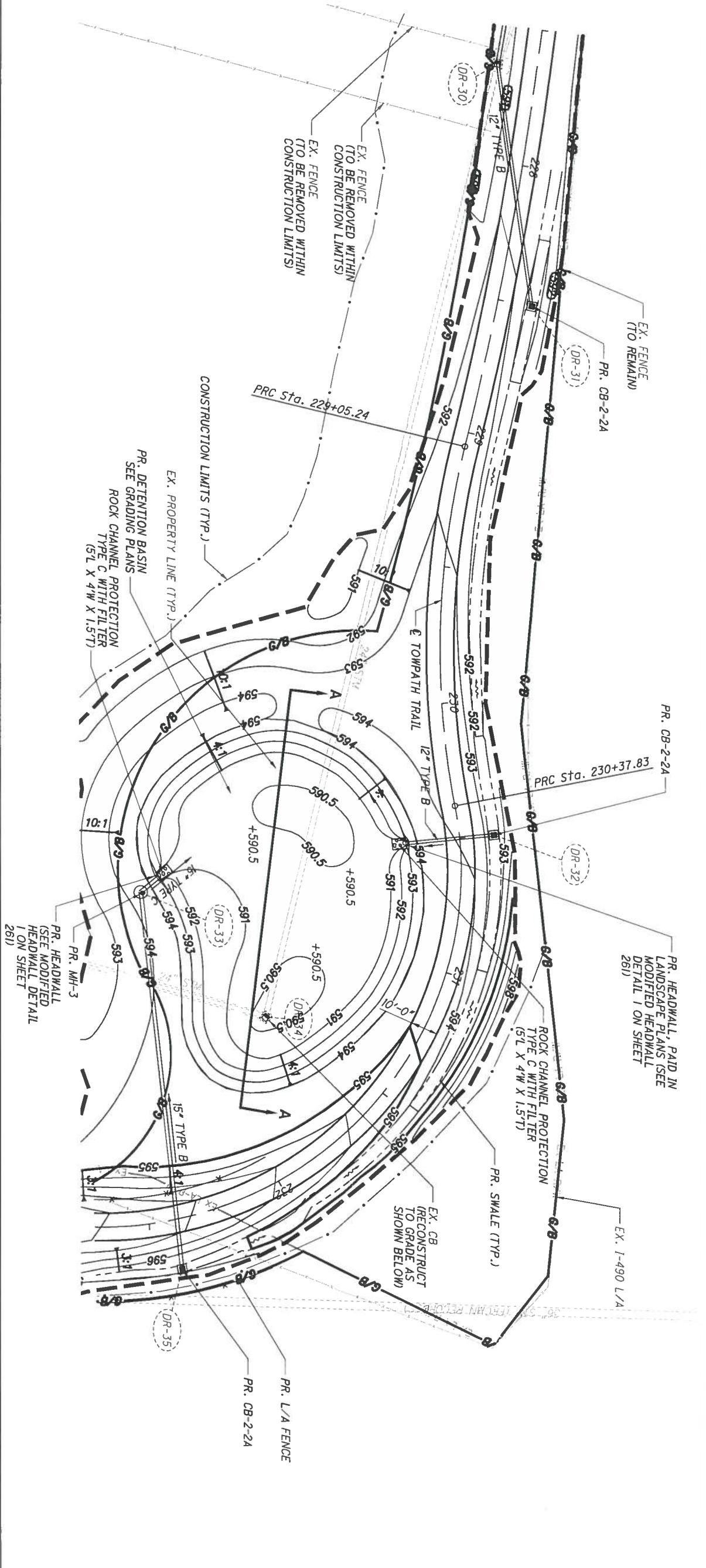
HYDRAULIC DESIGN TABLE	
DRAINAGE AREA	2.24 AC
HWS	593.65
HW10	593.94
HW25	594.33
HW50	594.66
QIN-5	4.01 CFS
QOUT-5	0.65 CFS
QIN-10	5.26 CFS
QOUT-10	0.86 CFS
QIN-25	7.14 CFS
QOUT-25	1.08 CFS
QIN-50	8.79 CFS
QOUT-50	1.23 CFS

NOTE:
 PROVIDE ITEM 670 SLOPE AND EROSION PROTECTION ON INTERIOR BASIN SIDE SLOPES. SEE SWPPP FOR GRADING SEE SHEET 87

PAYMENT:
 GRADING IS PAID ON EARTHWORK PLANS. THE CONSTRUCTION OF A NEW CB INTO A WATER QUALITY BASIN AS SHOWN ON THIS SHEET, INCLUDING NO. 2 AGGREGATE, RISER PIPE AND ALL INCIDENTALS, IS PAID AT THE CONTRACT PRICE FOR:
 ITEM 611 - WATER QUALITY BASIN, DETENTION

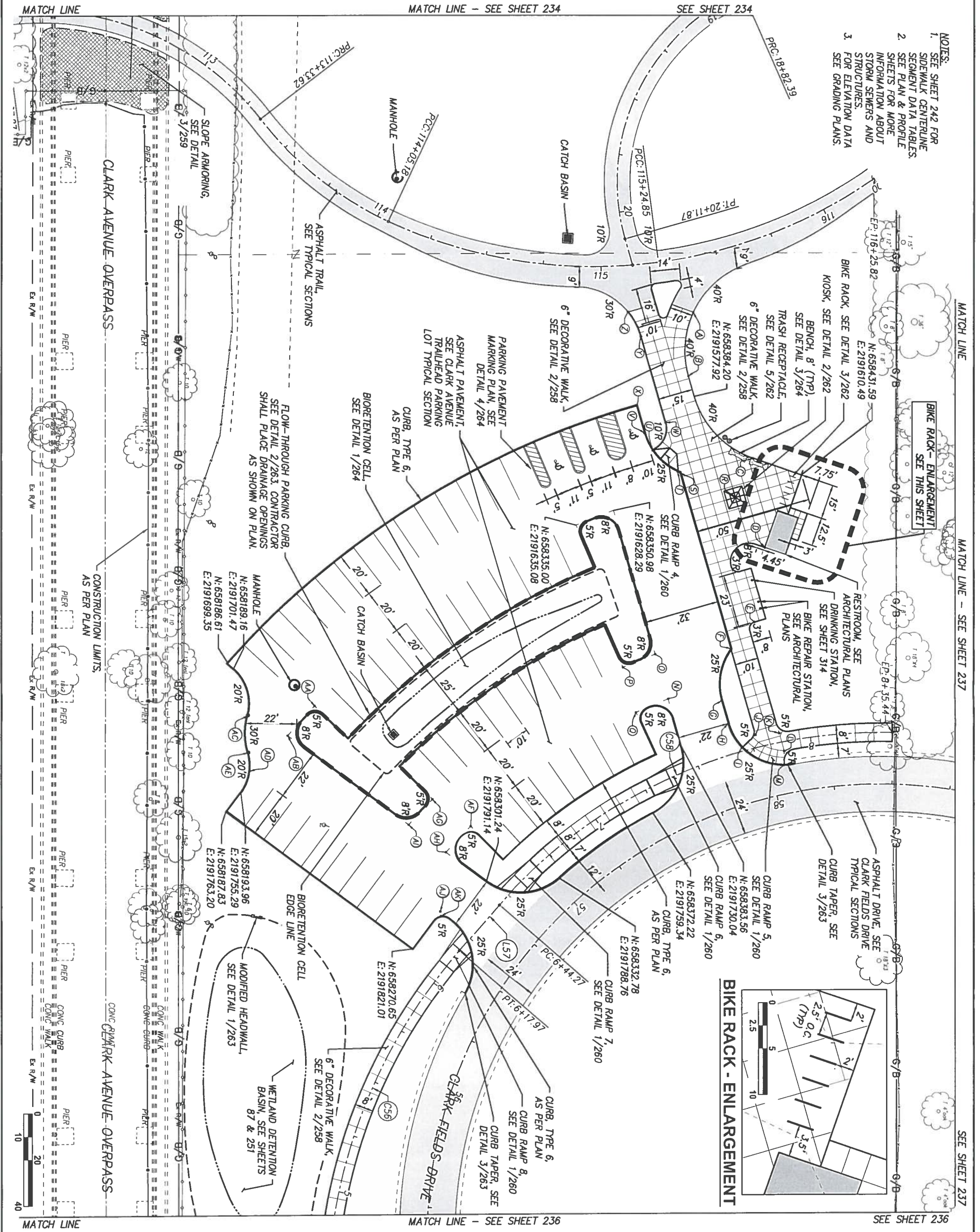


HYDRAULIC DESIGN TABLE	
DRAINAGE AREA	2.87 AC
HWMOV	591.28
HMS	592.01
HM10	592.04
HM25	592.19
HM50	592.37
QIN-5	4.87 CFS
QOUT-5	0.14 CFS
QIN-10	6.44 CFS
QOUT-10	0.46 CFS
QIN-25	8.79 CFS
QOUT-25	1.92 CFS
QIN-50	10.88 CFS
QOUT-50	4.55 CFS

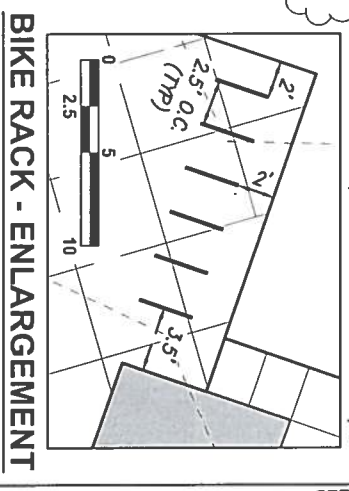


NOTE:
 PROVIDE SLOPE AND EROSION PROTECTION
 INTERIOR BASIN SIDE SLOPES. SEE SWPPP.
 FOR GRADING SEE SHEET 94

PAYMENT:
 GRADING IS PAID ON EARTHWORK PLANS.
 THE RECONSTRUCTION OF EXISTING CB INTO A
 WATER QUALITY BASIN AS SHOWN ON THIS SHEET,
 INCLUDING NO. 2 AGGREGATE, RISER PIPE, AND ALL
 INCIDENTALS IS PAID AT THE CONTRACT PRICE FOR
 ITEM 611 - WATER QUALITY BASIN, DETENTION



- NOTES:
1. SEE SHEET 242 FOR SIDEWALK CENTERLINE SEGMENT DATA TABLES. SEE PLAN & PROFILE SHEETS FOR MORE INFORMATION ABOUT STORM SEWERS AND STRUCTURES.
 2. SEE ELEVATION DATA FOR GRADING PLANS.
 3. SEE SHEET 242 FOR SIDEWALK CENTERLINE SEGMENT DATA TABLES. SEE PLAN & PROFILE SHEETS FOR MORE INFORMATION ABOUT STORM SEWERS AND STRUCTURES.

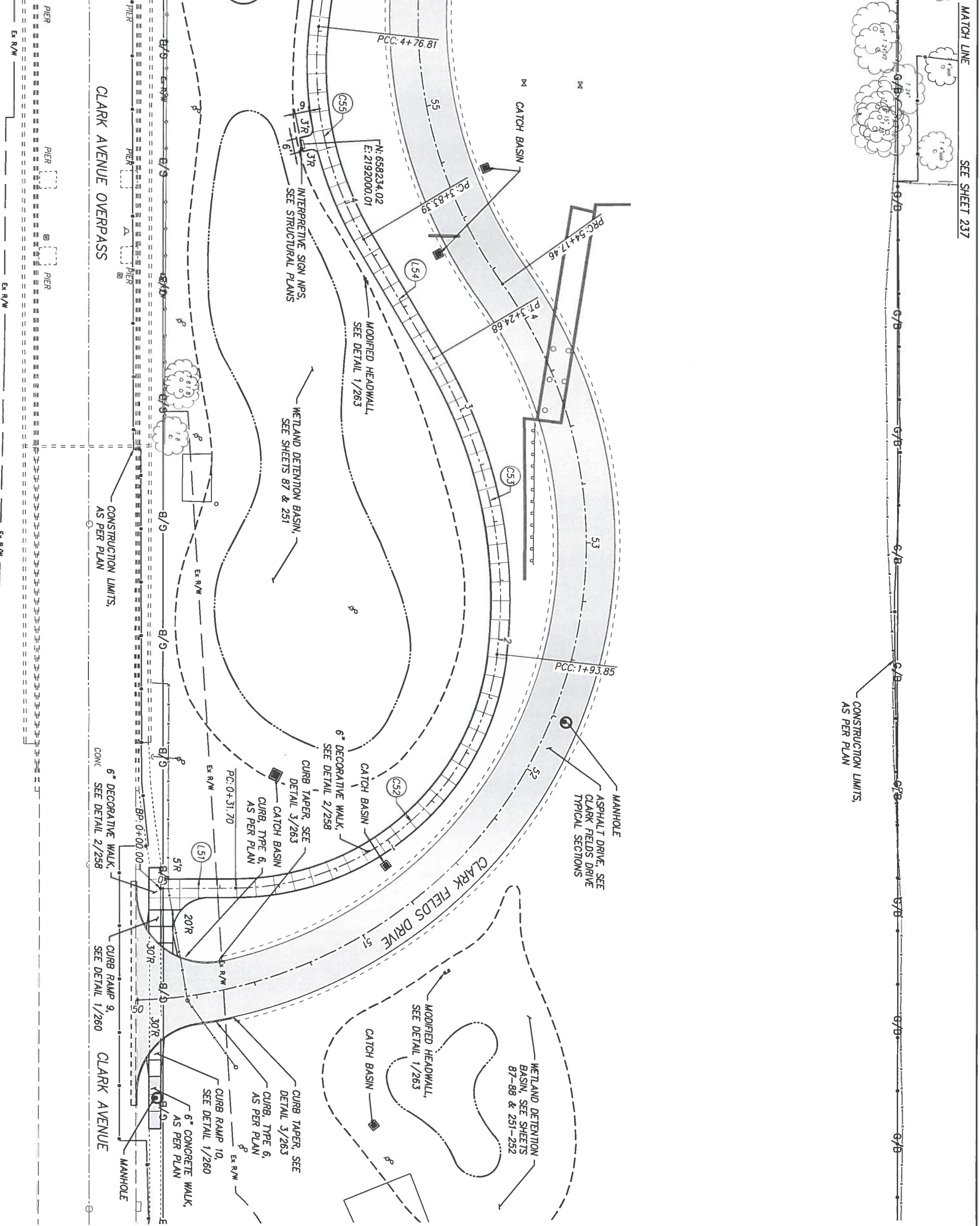


POINT MARK	NORTHING EASTING
A	N: 658382.68 E: 2191541.51
B	N: 658381.43 E: 2191569.27
C	N: 658410.44 E: 2191603.93
D	N: 658416.68 E: 2191642.53
E	N: 658413.24 E: 2191675.17
F	N: 658403.39 E: 2191687.03
G	N: 658400.11 E: 2191709.59
H	N: 658403.28 E: 2191719.47
I	N: 658409.66 E: 2191729.78
J	N: 658415.24 E: 2191724.04
K	N: 658425.40 E: 2191722.98
L	N: 658427.77 E: 2191730.65
M	N: 658427.99 E: 2191736.83
N	N: 658377.04 E: 2191709.45
O	N: 658370.85 E: 2191690.36
P	N: 658357.16 E: 2191696.47
Q	N: 658363.34 E: 2191715.71
R	N: 658403.29 E: 2191621.13
S	N: 658379.05 E: 2191611.01
T	N: 658378.02 E: 2191610.61
U	N: 658366.97 E: 2191601.85
V	N: 658363.27 E: 2191594.54
W	N: 658372.18 E: 2191589.58
X	N: 658359.51 E: 2191582.79
Y	N: 658360.37 E: 2191552.69
Z	N: 658354.52 E: 2191542.24
AA	N: 658224.51 E: 2191716.63
AB	N: 658213.37 E: 2191729.81
AC	N: 658195.84 E: 2191721.39
AD	N: 658197.49 E: 2191745.55
AE	N: 658196.56 E: 2191737.59
AF	N: 658293.62 E: 2191767.04
AG	N: 658276.75 E: 2191755.79
AH	N: 658283.28 E: 2191778.61
AI	N: 658266.82 E: 2191767.12
AJ	N: 658281.64 E: 2191804.29
AK	N: 658282.02 E: 2191806.37

MATCH LINE

MATCH LINE - SEE SHEET 235

SEE SHEET 235

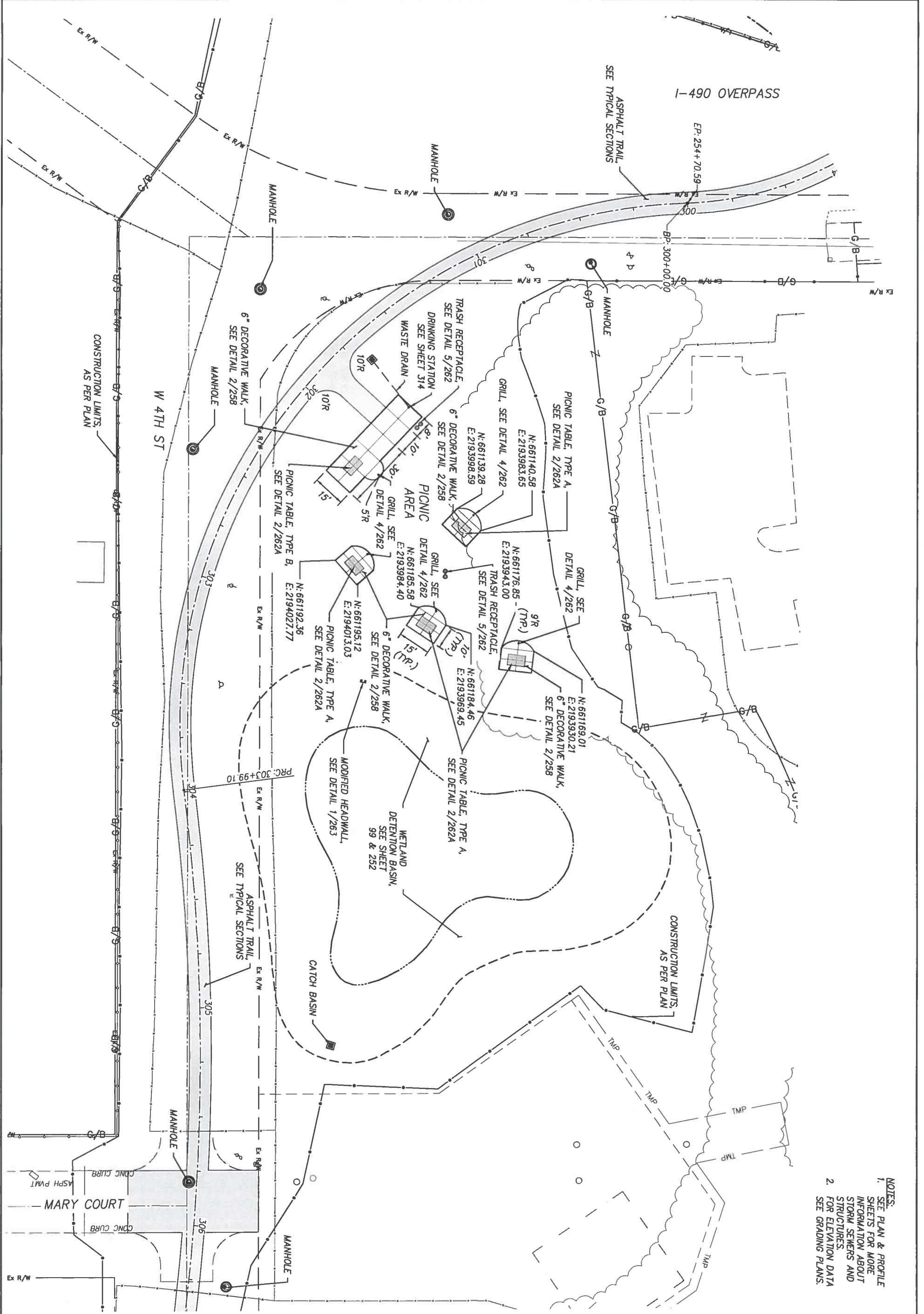


CLARK AVENUE OVERPASS

CLARK FIELDS DRIVE

CLARK AVENUE

- NOTES:
1. SEE SHEET 242 FOR SIDEWALK CENTERLINE SEGMENT DATA TABLES.
 2. SEE PLAN & PROFILE SHEETS FOR MORE INFORMATION ABOUT STORM SEWERS AND STRUCTURES.
 3. SEE ELEVATION DATA FOR GRADING PLANS.



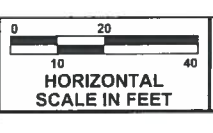
- NOTES:
1. SEE PLAN & PROFILE SHEETS FOR MORE INFORMATION ABOUT STORM SEWERS AND STRUCTURES.
 2. FOR ELEVATION DATA SEE GRADING PLANS.

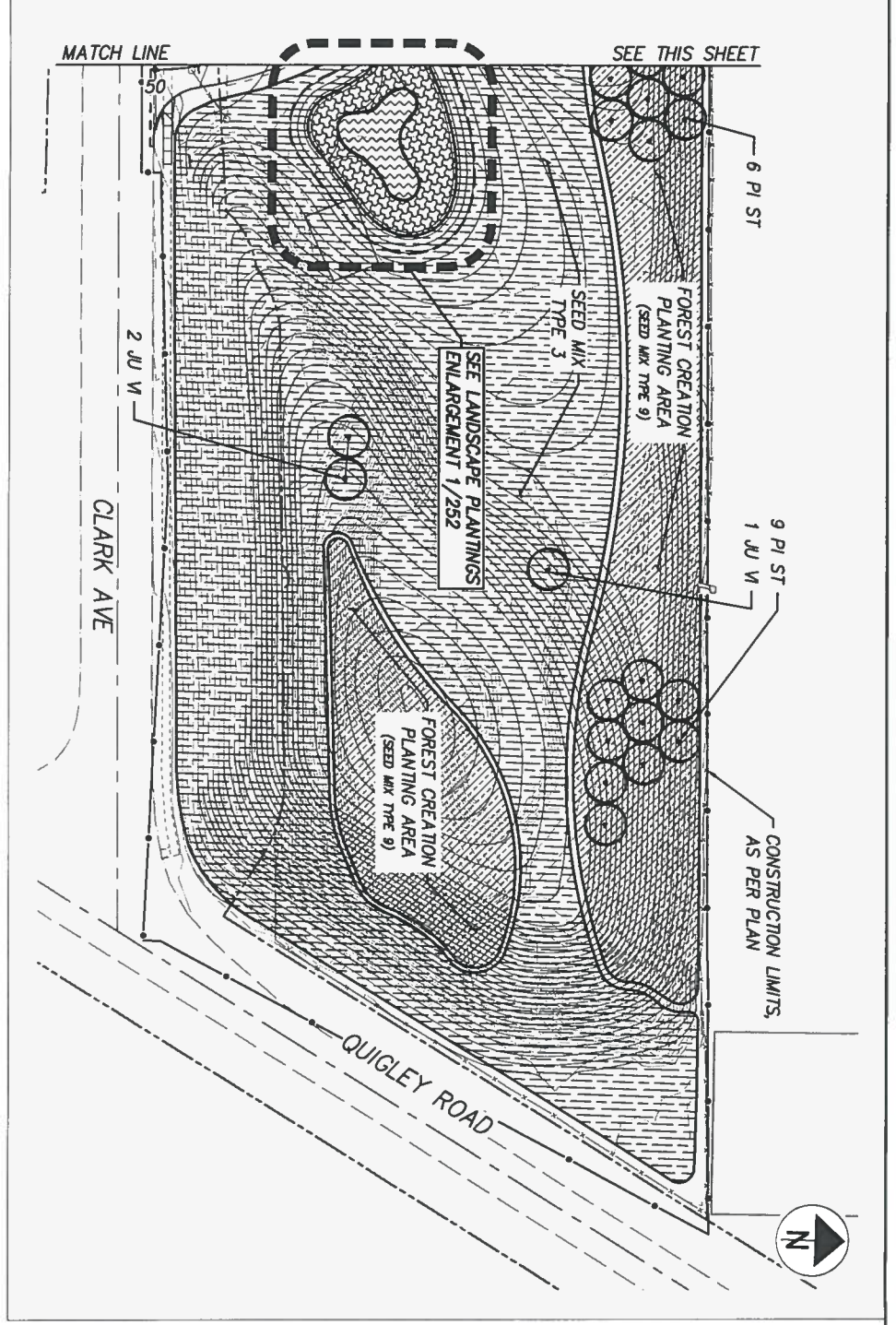
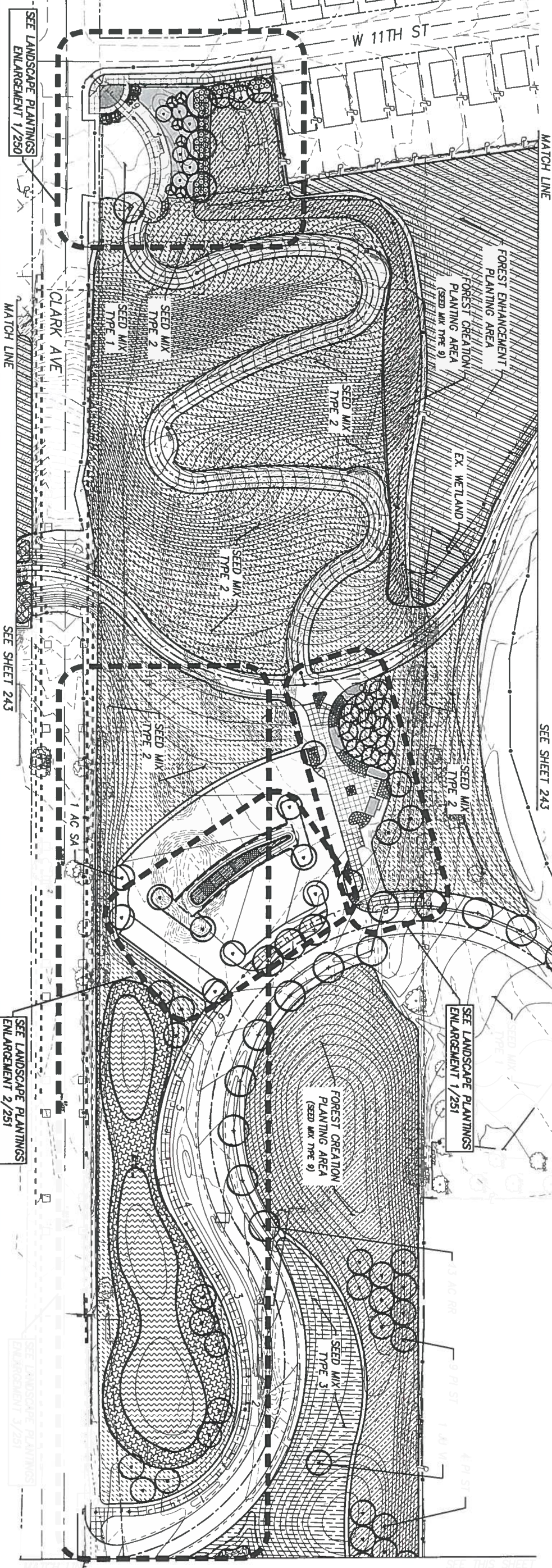
240
337

CUY-TOWPATH TRAIL, STAGE 3

**LANDSCAPE PLAN - SITE IMPROVEMENTS
MARY COURT WETLAND DETENTION BASIN**

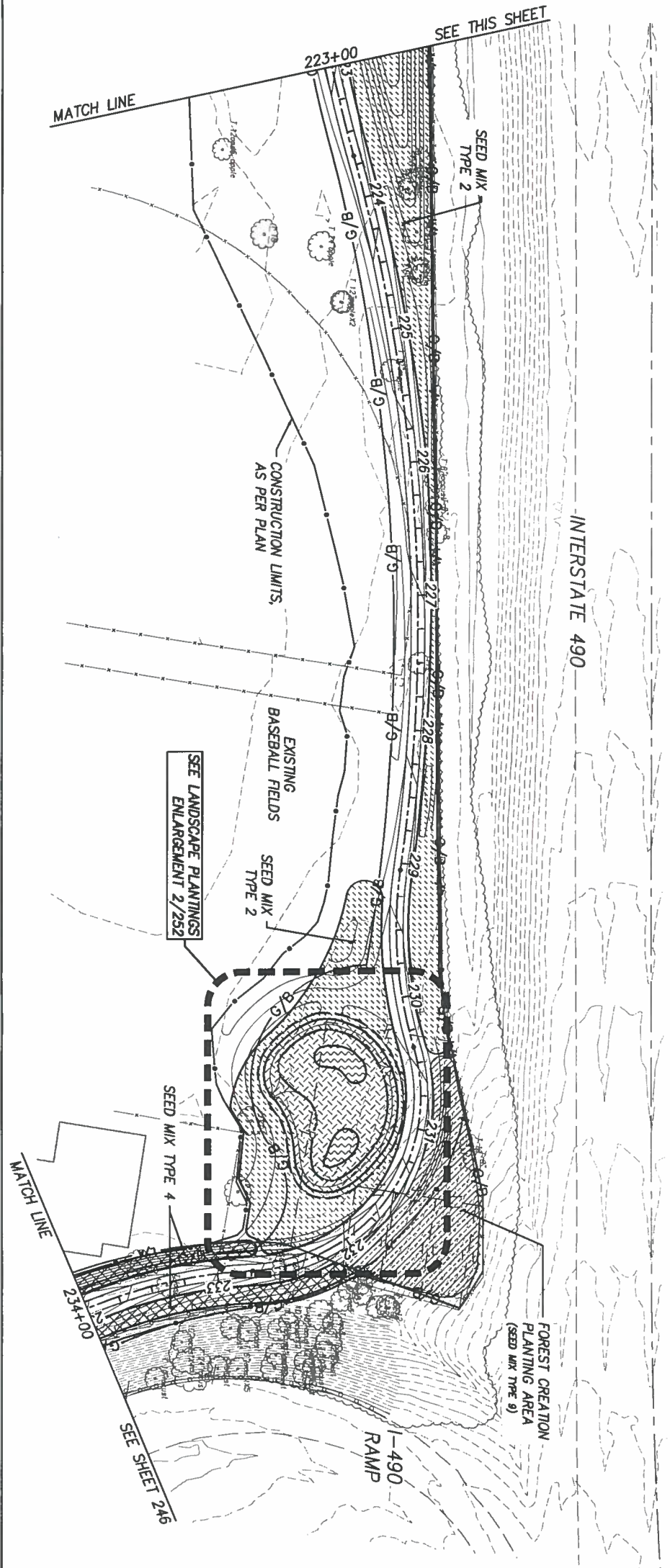
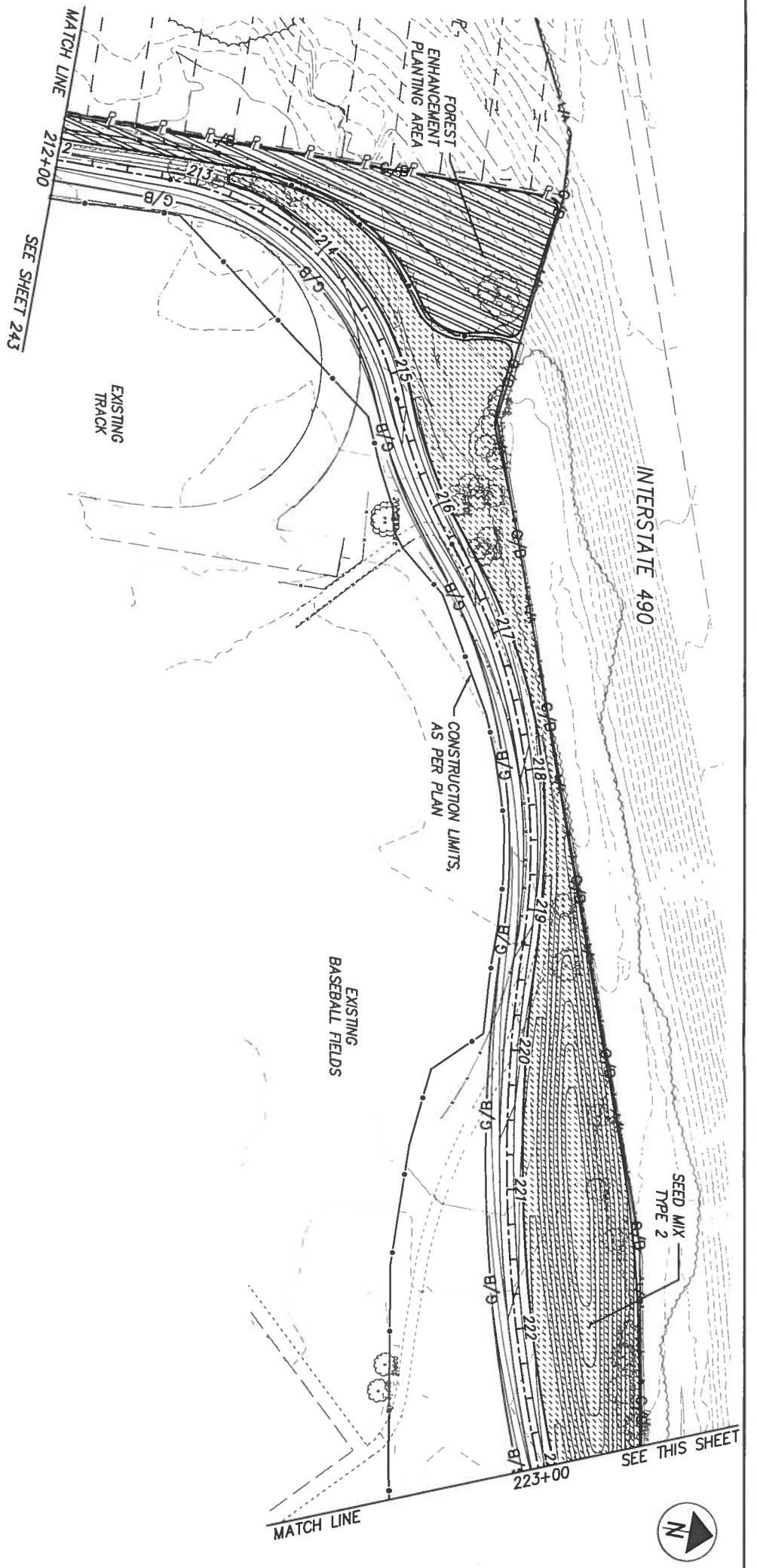
CALCULATED TR,CR
CHECKED KL,GN





<p>244 337</p>	<p>CUY-TOWPATH TRAIL, STAGE 3</p>	<p>LANDSCAPE PLAN - PLANTINGS W 11TH ST & CLARK AVE - NEIGHBORHOOD CONNECTOR & TRAIL HEAD</p>	<p>CALCULATED TR,CR</p> <p>CHECKED KL,GN</p>	<p>0 50 100 25 HORIZONTAL SCALE IN FEET</p>
--------------------	--	---	--	---

- NOTES:
1. SEE SHEETS 243, 244, & 245 FOR DIMENSIONS.
 2. LANDSCAPE LEGEND AND QUANTITIES.
 3. SEE SHEET 243 FOR SEEDING QUANTITIES.
 4. SEE SHEET 244 AND 245 FOR SEED TYPE AREAS.
 5. SEE SHEET 244 FOR MORE INFORMATION ABOUT FOREST ENHANCEMENT AND CREATION PLANTING AREAS.
 6. FOR DEPARTMENT, SEE SHEETS 243 - 245.
 7. FOR DRAWING, SEE SHEETS 243 - 245.
 8. FOR LANDSCAPING, SEE SHEETS 243 - 245.



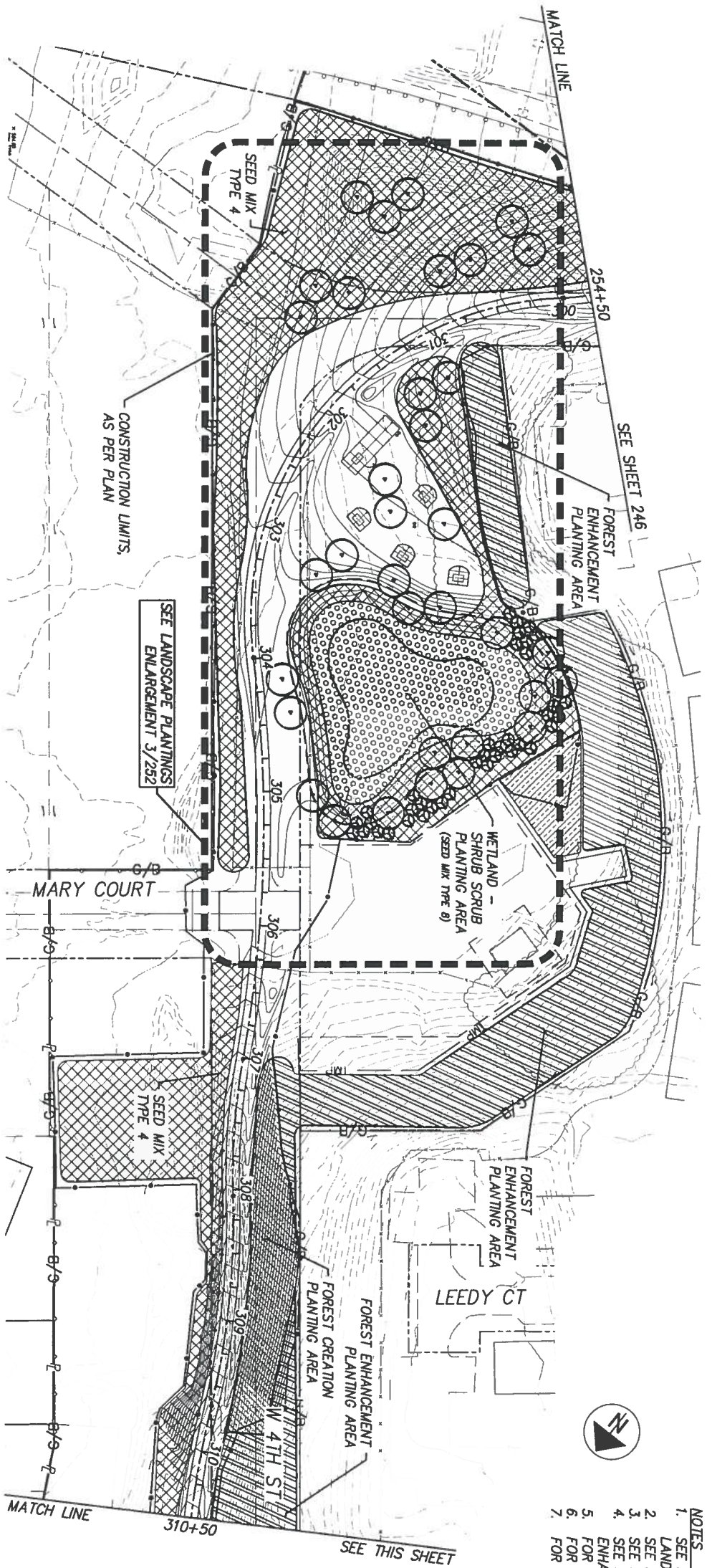
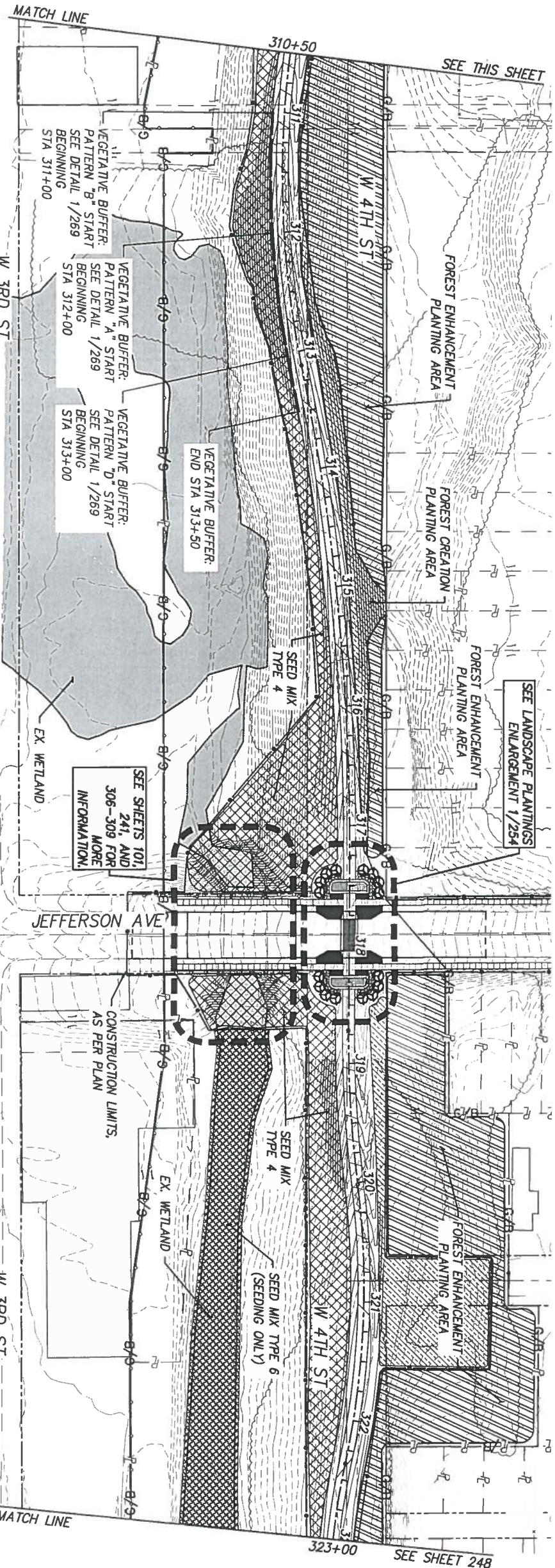
- NOTES:
1. SEE SHEETS 255, 256, & 257 FOR SUBSUMMARIES, LANDSCAPE LEGEND AND QUANTITIES
 2. SEE SHEET 197 FOR SEEDING QUANTITIES
 3. SEE SHEETS 227-230 FOR SEED TYPE MIXES
 4. SEE SHEET 262A FOR MORE INFORMATION ABOUT FOREST ENHANCEMENT AND CREATION PLANTING AREAS
 5. FOR DEMOLITION, SEE SHEETS 200 - 222
 6. FOR GRADING, SEE SHEETS 83 - 103
 7. FOR LANDSCAPING, SEE SHEETS 223 - 267

CUY-TOWPATH TRAIL, STAGE 3

LANDSCAPE PLAN - PLANTINGS
 STA 212+00 TO STA 234+00 - CLARK FIELDS AREA

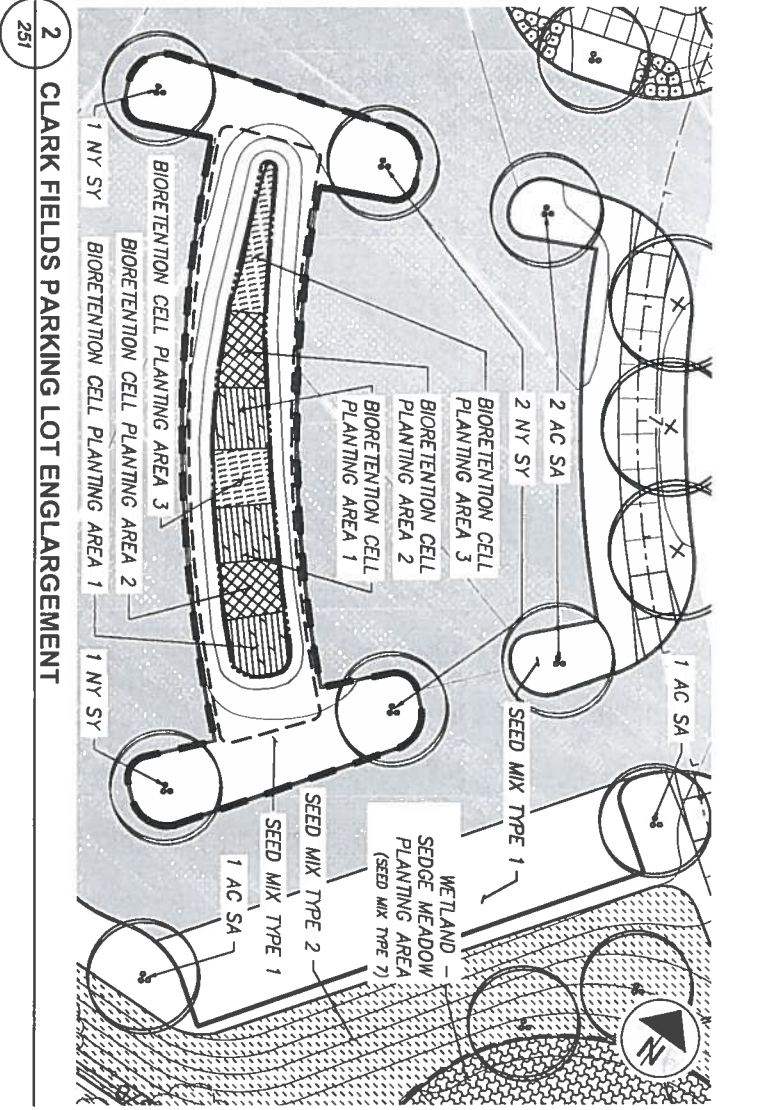
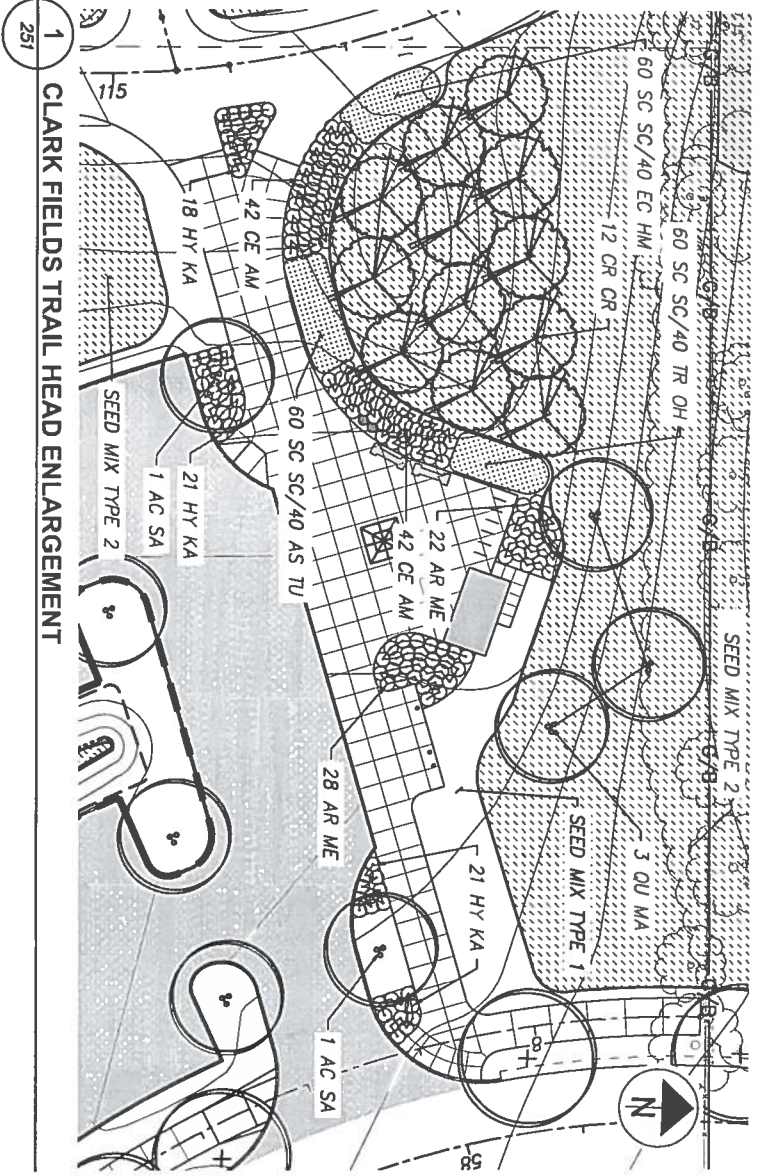
CALCULATED TR,CR	0 50 100
CHECKED KL,GN	25 HORIZONTAL SCALE IN FEET

245
337

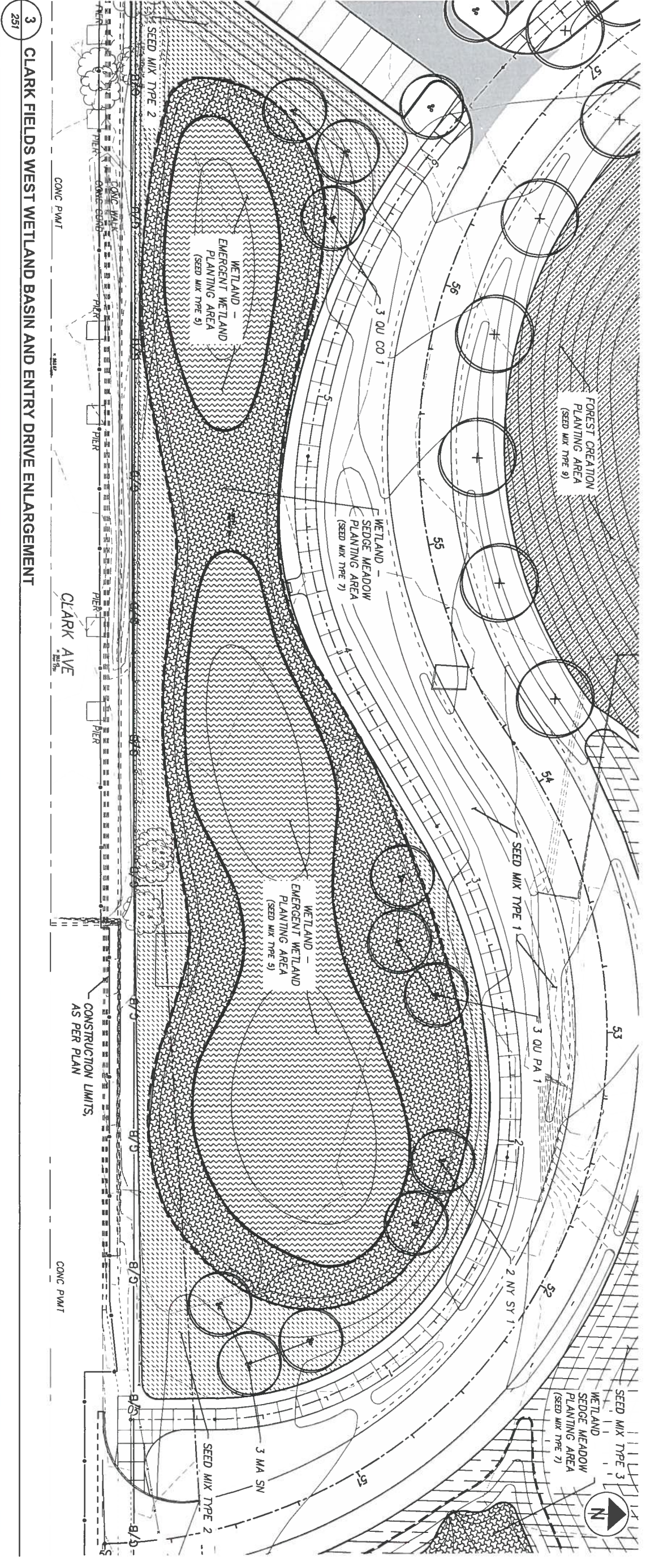


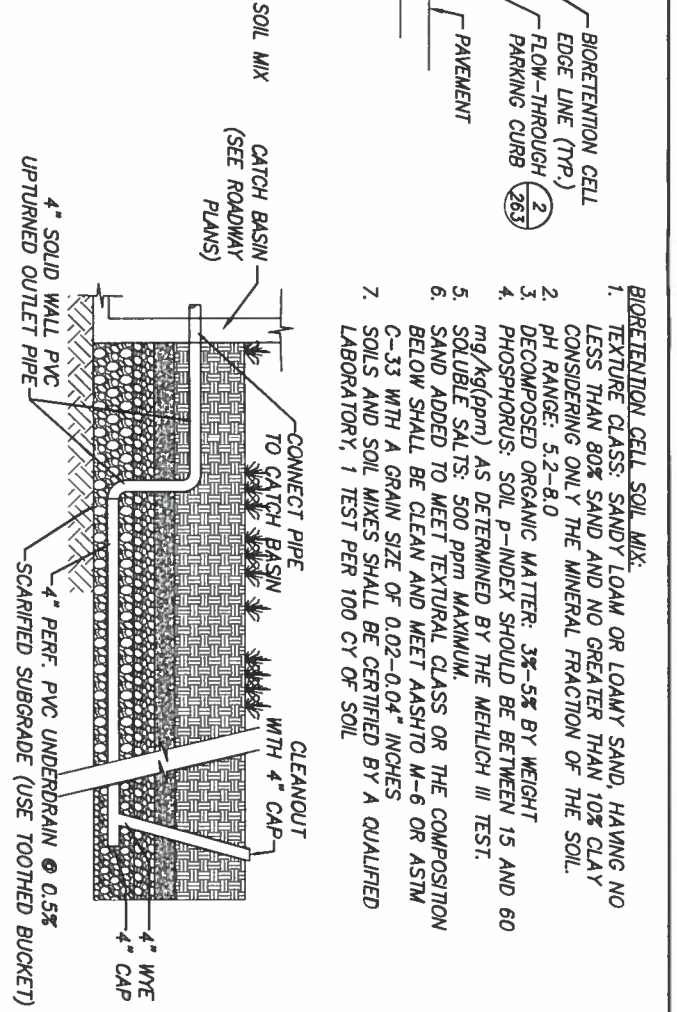
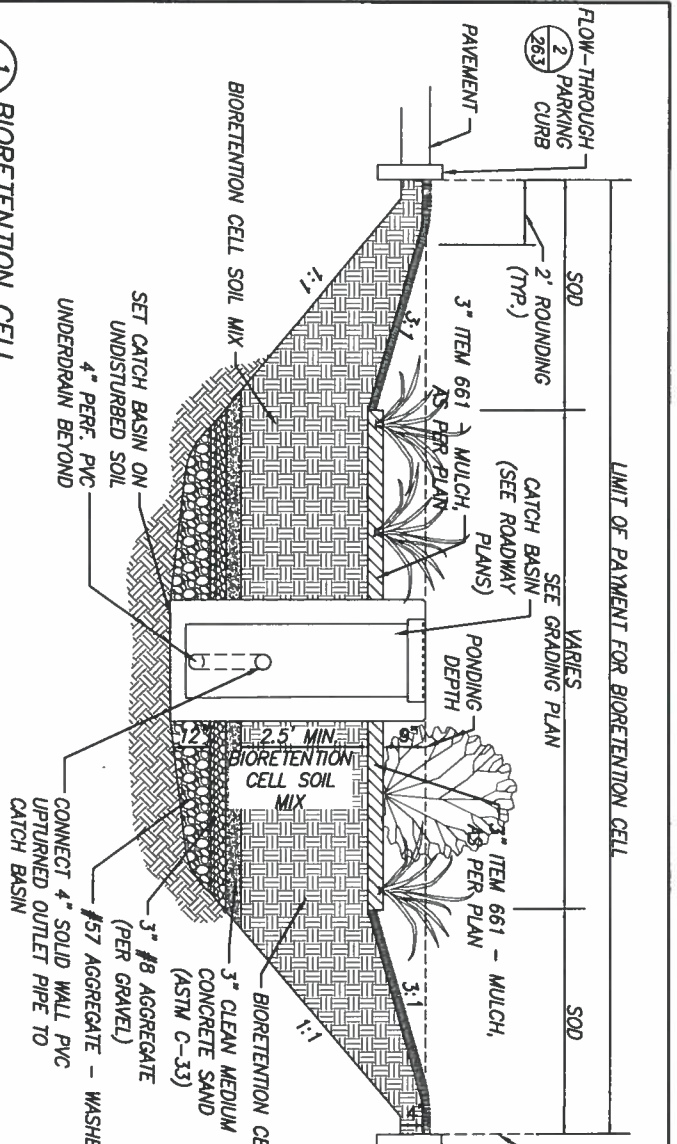
- NOTES
1. SEE SHEETS 255, 256, & 257 FOR SUBSUMMARIES.
 2. LANDSCAPE LEGEND AND QUANTITIES.
 3. SEE SHEET 197 FOR SEEDING QUANTITIES.
 4. SEE SHEETS 227-230 FOR SEED TYPE MIXES.
 5. SEE SHEET 262A FOR MORE INFORMATION ABOUT FOREST ENHANCEMENT AND CREATION PLANTING AREAS.
 6. FOR DEMOLITION, SEE SHEETS 200 - 222.
 7. FOR GRADING, SEE SHEETS 83 - 103.
 8. FOR LANDSCAPING, SEE SHEETS 223 - 267.





- NOTES**
1. SEE SHEETS 255, 256, & 257 FOR SUBSUMMARIES, LANDSCAPE LEGEND AND QUANTITIES
 2. SEE SHEET 197 FOR SEEDING QUANTITIES
 3. SEE SHEETS 227-230 FOR SEED TYPE MIXES
 4. SEE SHEET 262A FOR MORE INFORMATION ABOUT FOREST ENHANCEMENT AND CREATION PLANTING AREAS
 5. FOR DEMOLITION, SEE SHEETS 200 - 222
 6. FOR GRADING, SEE SHEETS 83 - 103
 7. FOR LANDSCAPING, SEE SHEETS 223 - 267
 8. CONTRACTOR SHALL NOT DIG DEEPER THAN 18" IN CLARK FIELDS WEST WETLAND BASIN AND ENTRY DRIVE ENLARGEMENT. THIS AREA HAS GEOSYNTHETIC CLAY LINER. SEE GRADING PLAN SHEET 86-88 AND EARTHWORK SHEETS 78-80 FOR MORE INFORMATION.



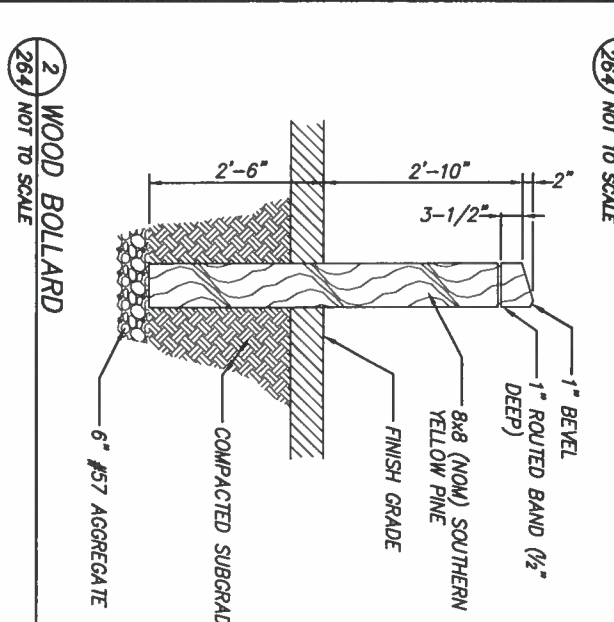


BIORETENTION CELL SOIL MIX:

1. TEXTURE CLASS: SANDY LOAM OR LOAMY SAND, HAVING NO LESS THAN 80% SAND AND NO GREATER THAN 10% CLAY CONSIDERING ONLY THE MINERAL FRACTION OF THE SOIL.
2. PH RANGE: 5.2-8.0
3. DECOMPOSED ORGANIC MATTER: 3%-5% BY WEIGHT
4. PHOSPHORUS: SOIL P-INDEX SHOULD BE BETWEEN 15 AND 60 mg/kg(ppm) AS DETERMINED BY THE MEHLICH III TEST.
5. SOLUBLE SALTS: 500 ppm MAXIMUM.
6. SAND ADDED TO MEET TEXTURAL CLASS OR THE COMPOSITION BELOW SHALL BE CLEAN AND MEET ASTM M-6 OR ASTM C-33 WITH A GRAIN SIZE OF 0.02-0.04" INCHES
7. SOILS AND SOIL MIXES SHALL BE CERTIFIED BY A QUALIFIED LABORATORY, 1 TEST PER 100 CY OF SOIL

NOTES:

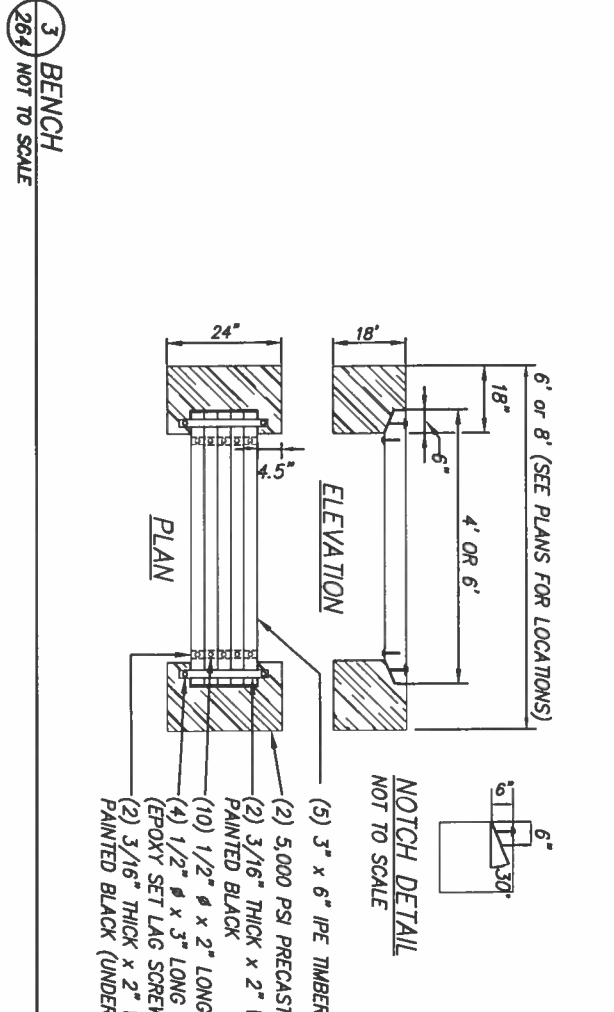
1. ALL WORK ON THIS DETAIL, INCLUDING BIORETENTION CELL SOIL MIX LAYER, SOD, AGGREGATE LAYERS, AND BIORETENTION UNDERDRAINS, SHALL BE PAID UNDER ITEM 203 - SPECIAL - BIORETENTION CELL, UNLESS OTHERWISE NOTED.
2. SEE SHEETS 251 & 255 FOR BIORETENTION CELL PLANTS.
3. FOR GRADING PLANS, SEE SHEETS 83-103.
4. FOR UTILITY INFORMATION, SEE SHEETS 68-69.
5. PIPES FOR UPRTURNED UNDERDRAIN TO BE SOLID WALL PIPE. ENSURE INVERT IS 18" BELOW BIORETENTION CELL SURFACE. CONTRACTOR SHALL USE TOOTHED BUCKET INSTEAD OF SMOOTH BUCKET TO EXCAVATE THE BOTTOM OF BIORETENTION CELL (SCARIFICATION).
6. FLOW-THROUGH PARKING CURB SHALL BE PAID UNDER ITEM 609 - CURB, MISC.: FLOW-THROUGH PARKING CURB. RECYCLED CONCRETE AGGREGATE OR SLAG ARE NOT ACCEPTABLE.
7. FURNISH AND PLACE SOD PER ITEM 660, EXCEPT DO NOT PLACE TOPSOIL OR ANY MATERIAL OTHER THAN BIORETENTION CELL SOIL MIX TO EVEN OR LEVEL SUBSURFACE PRIOR TO SOD PLACEMENT. WHEN TAMPING SOD, DO NOT TO COMPACT BIORETENTION CELL SOIL MIX. PAYMENT FOR SOD SHALL BE PAID UNDER ITEM SPECIAL - BIORETENTION CELL.



WOOD BOLLARD

NOTES:

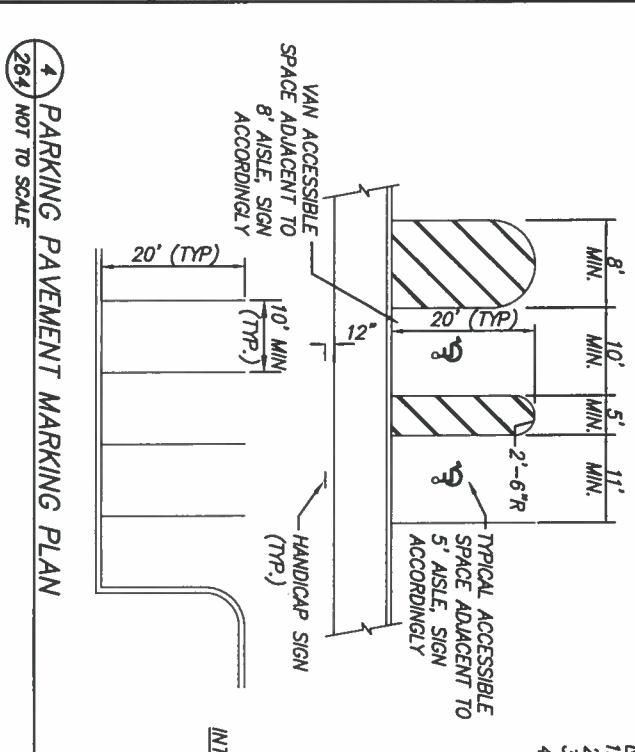
1. ALL TIMBERS SHALL BE AS SPECIFIED IN ODOT 711.26. TIMBERS SHALL BE TREATED #1 SOUTHERN YELLOW PINE TREATED WITH 0.15#/CF OF CA IN ACCORDANCE WITH THE AMERICAN WOOD PRESERVERS ASSOCIATION, AND DRESSED S4S IN ACCORDANCE WITH THE SOUTHERN FOREST PRODUCTS ASSOCIATION OR WESTERN WOOD PRODUCTS ASSOCIATION. CONTRACTOR SHALL APPLY TWO (2) COATS OF SOLID EXTERIOR WOOD STAIN FOLLOWING THE MANUFACTURER'S REQUIREMENTS FOR APPLICATION TO ALL TIMBER SURFACES. ENGINEER WILL SELECT THE COLOR FROM SAMPLES PROVIDED BY THE CONTRACTOR. ACCEPTABLE MANUFACTURERS: BENJAMIN MOORE, ICI DULUX PAINTS, SHERWIN WILLIAMS, OR APPROVED EQUAL.
2. CONTRACTOR SHALL APPLY TWO (2) COATS OF SOLID EXTERIOR WOOD STAIN FOLLOWING THE MANUFACTURER'S REQUIREMENTS FOR APPLICATION TO ALL TIMBER SURFACES. ENGINEER WILL SELECT THE COLOR FROM SAMPLES PROVIDED BY THE CONTRACTOR. ACCEPTABLE MANUFACTURERS: BENJAMIN MOORE, ICI DULUX PAINTS, SHERWIN WILLIAMS, OR APPROVED EQUAL.



BENCH

NOTES:

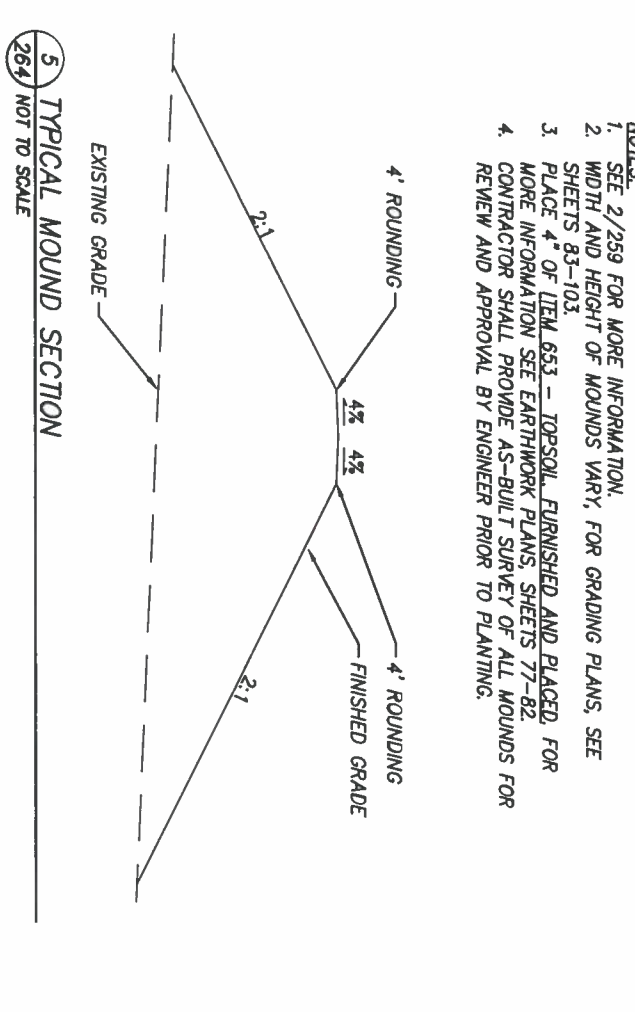
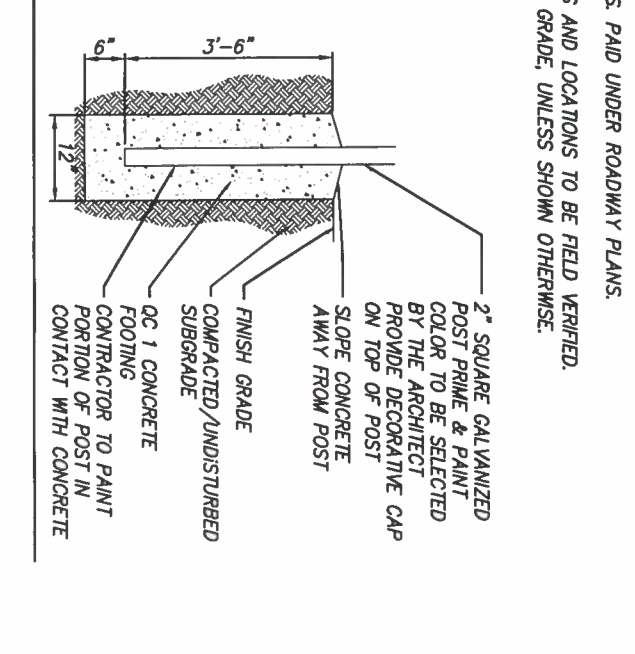
1. ALL WORK ON THIS DETAIL, INCLUDING ASSEMBLY, IPE TIMBERS, PAINT, STEEL STRAPS, EPOXY, PRECAST CONCRETE BLOCKS, AND HARDWARE, SHALL BE PAID UNDER ITEM SPECIAL - MISC.: BENCH, 6' OR BENCH 8', UNLESS OTHERWISE NOTED.
2. CONTRACTOR SHALL PROVIDE AS-BUILT SURVEY OF ALL MOUNDS FOR REVIEW AND APPROVAL BY ENGINEER PRIOR TO PLANTING.



PARKING PAVEMENT MARKING PLAN

NOTES:

1. SEE ROADWAY PLANS FOR SIGN LOCATIONS. PAID UNDER ROADWAY PLANS.
2. SIGN SHALL BE SINGLE POST DESIGN.
3. ALL SIGNS TO BE LOCATED AS PER PLANS AND LOCATIONS TO BE FIELD VERIFIED.
4. TOP OF SIGN SHALL BE 84" ABOVE FINISH GRADE, UNLESS SHOWN OTHERWISE.



TYPICAL MOUND SECTION

NOTES:

1. SEE 2/259 FOR MORE INFORMATION.
2. WIDTH AND HEIGHT OF MOUNDS VARY, FOR GRADING PLANS, SEE SHEETS 83-103.
3. PLACE 4" OF ITEM 653 - TOPSOIL, FURNISHED AND PLACED, FOR MORE INFORMATION SEE EARTHWORK PLANS SHEETS 77-82.
4. CONTRACTOR SHALL PROVIDE AS-BUILT SURVEY OF ALL MOUNDS FOR REVIEW AND APPROVAL BY ENGINEER PRIOR TO PLANTING.