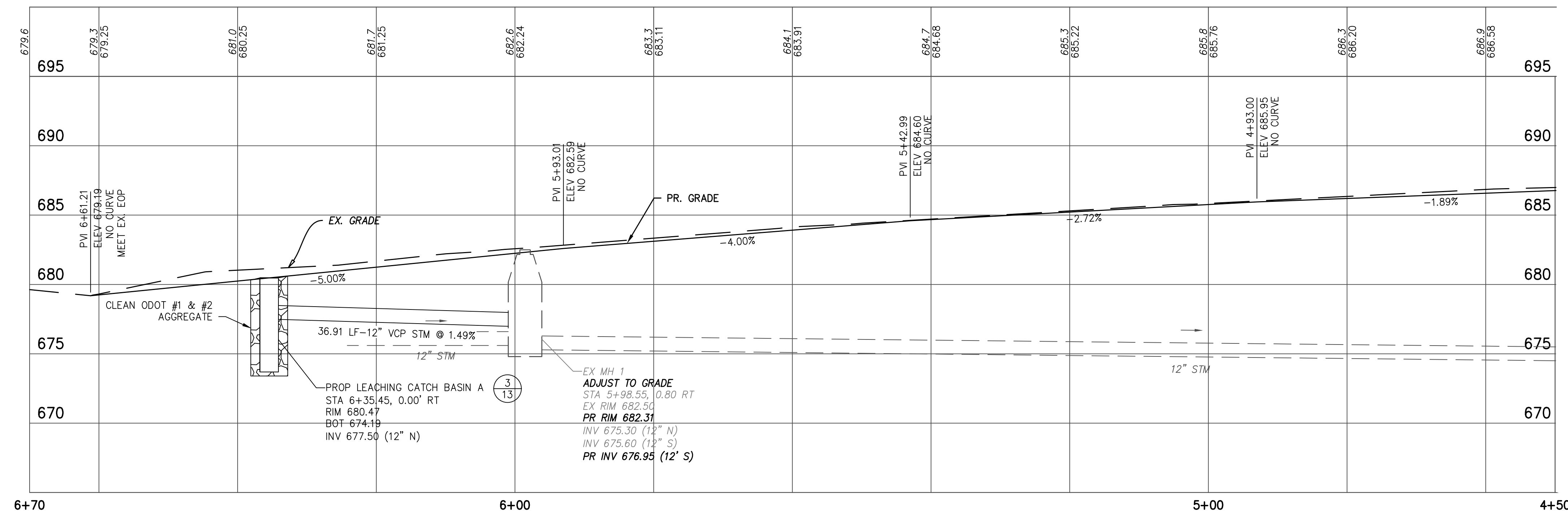
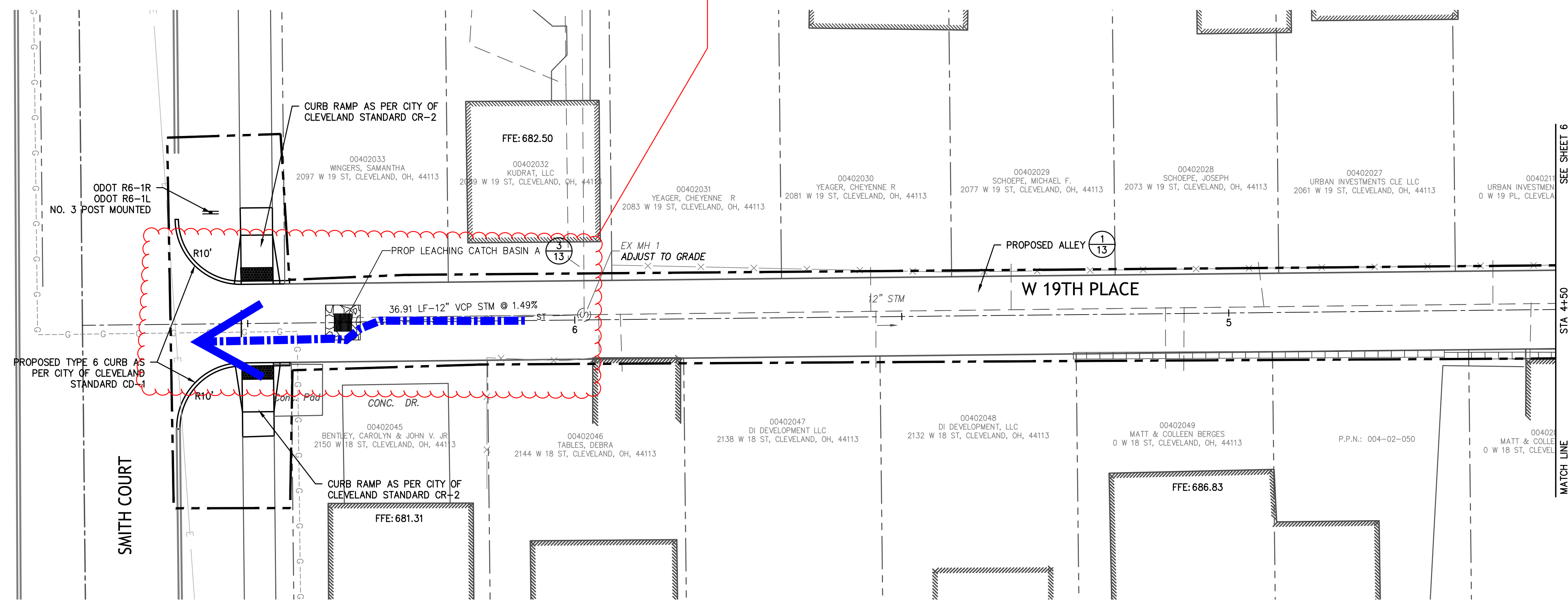




LEGEND

--- CONSTRUCTION LIMITS

Vast majority of surface flow along center of alley bypasses the inlet as it reaches the inlet.



NOT FOR CONSTRUCTION

WEST 19TH PLACE
TREMONT WEST DEVELOPMENT CORPORATION

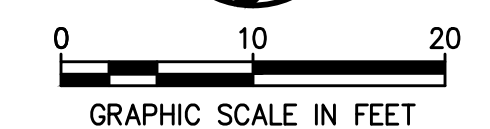
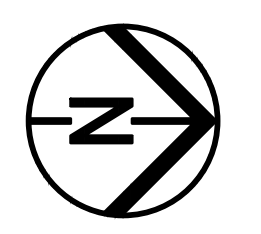


PERMIT REVIEW

DATE: _____

REVISIONS		
NO.	DATE	DESCRIPTION

PROJECT NO.: 14-00325-010
 DRAWN BY: GCB / RS / KEH
 CHECKED BY: KGH
 DATE ISSUED: 2016/08/01



PLAN AND PROFILE

TREMONT WEST DEVELOPMENT CORPORATION 14-00325-010 W. 19TH PL GREEN ALLEY DESIGN SERVICES CAD/25/08/14 00325-010 - 7/5/2017 3:23:13 PM

WEST 19TH PLACE
TREMONT WEST DEVELOPMENT CORPORATION



PERMIT REVIEW

DATE: _____

REVISIONS		
NO.	DATE	DESCRIPTION

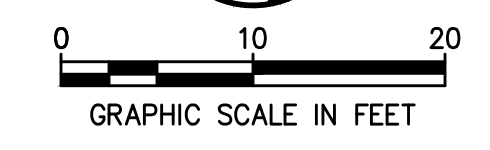
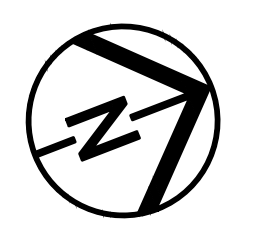
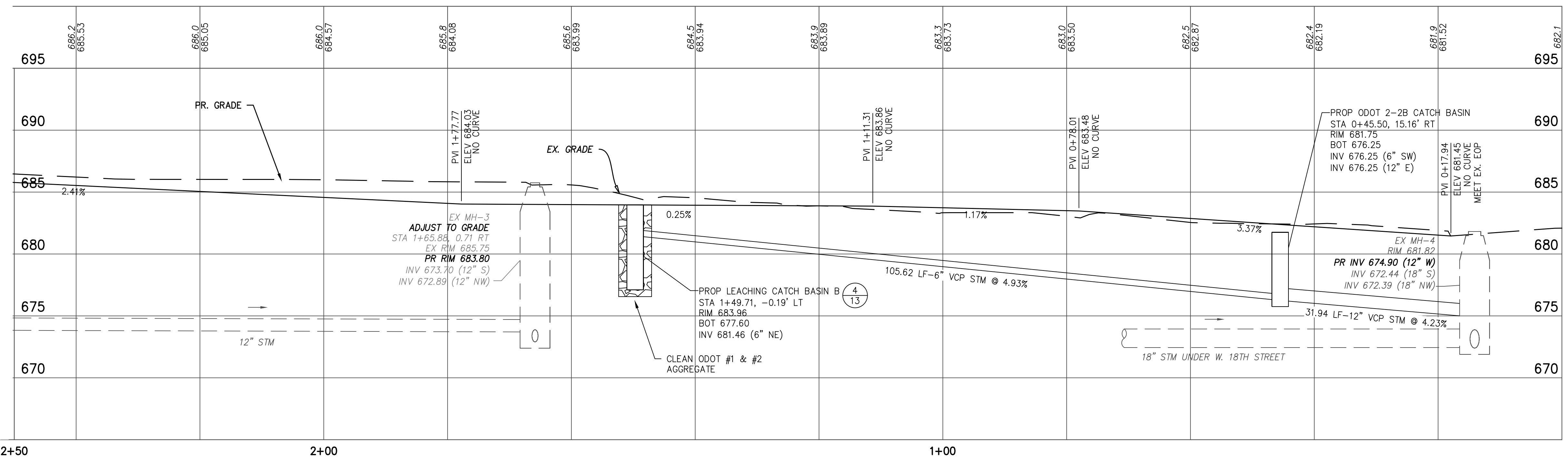
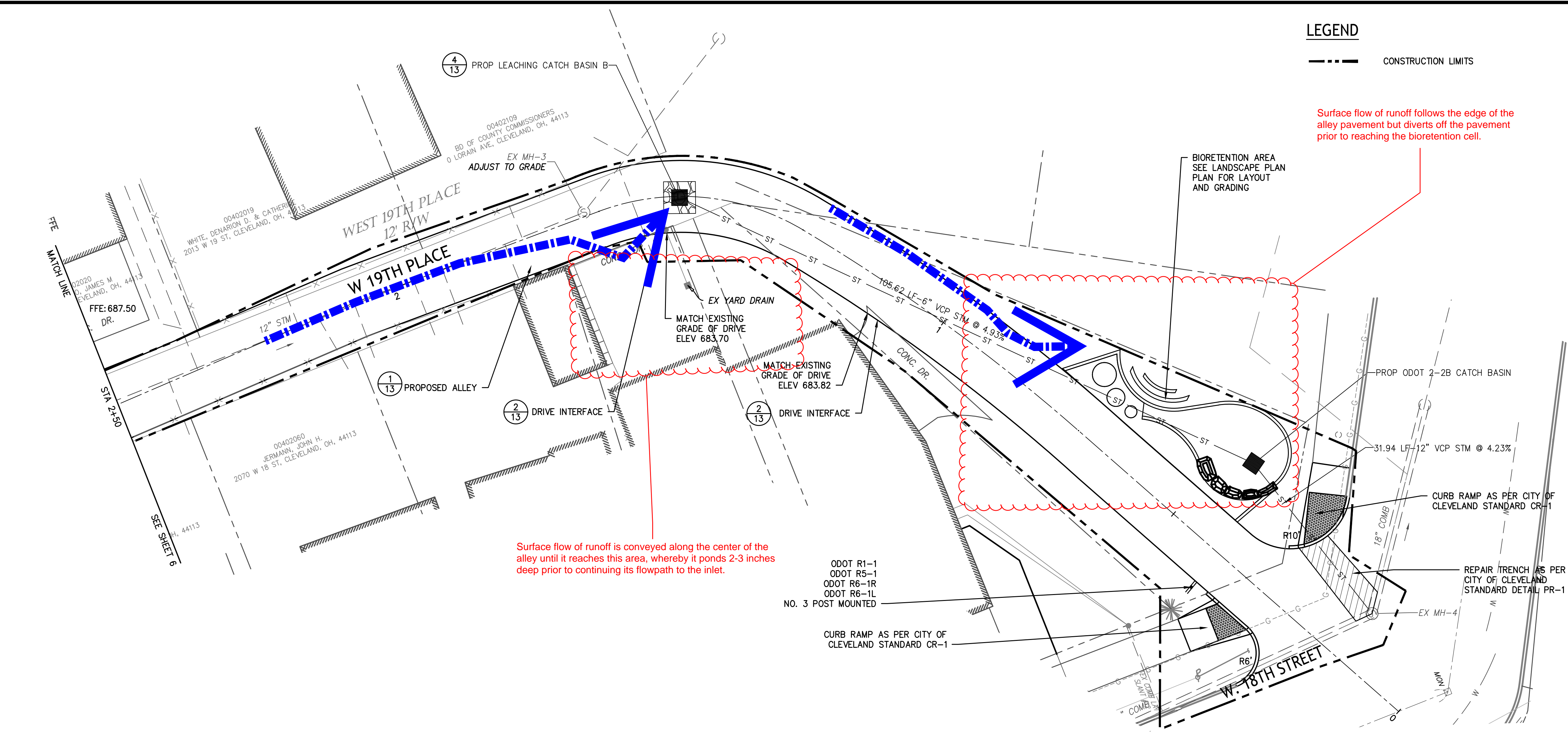
PROJECT NO.: 14-00325-010
 DRAWN BY: GCB / RS / KEH
 CHECKED BY: KGH
 DATE ISSUED: 2016/08/01

PLAN AND PROFILE

LEGEND
 - - - - - CONSTRUCTION LIMITS

Surface flow of runoff follows the edge of the alley pavement but diverts off the pavement prior to reaching the bioretention cell.

Surface flow of runoff is conveyed along the center of the alley until it reaches this area, whereby it ponds 2-3 inches deep prior to continuing its flowpath to the inlet.



NOT FOR CONSTRUCTION

TREMONT WEST DEVELOPMENT CORPORATION 14-00325-010 W. 19TH PL GREEN ALLEY DESIGN SERVICES CAD/25/REV 14-00325-010 7/5/2017 3:23:32 PM