

DOAN BROOK SOWINSKI PARK FLOODPLAIN CONNECTION

Cleveland, OH

LAKE ERIE DIRECT TRIBUTARIES · DOAN BROOK

Summary

The District partnered with the Doan Brook Watershed Partnership by providing matching funds and in-kind services for this Ohio EPA Section 319 grant-funded project. This project involved the restoration of 600 linear feet of stream channel and floodplain area. Existing failing sandstone walls along the stream banks were removed, an expanded floodplain was created, and the stream banks were restored through the use of bio-engineered bank stabilization techniques. The expansion of the floodplain allowed for better channel alignment. Several riffle zones and pools were created along the stream channel for enhanced fish/invertebrate passage and habitat. Finally, native riparian vegetation was planted to improve riparian/floodplain habitat.

Project Details

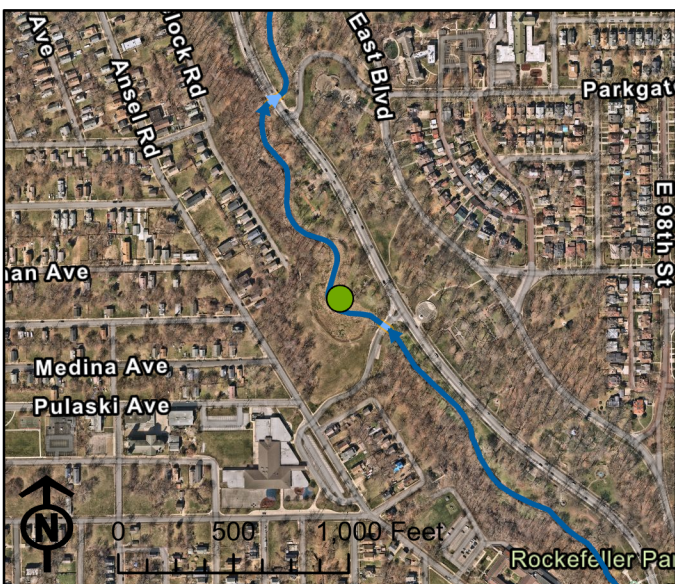
Asset ID(s): DB00013

Contract Type: Partner Project

Construction Cost: \$810,000.00

Completed Date: May 28, 2023

Watershed Team Leader: Donna Friedman (friedmand@neorsd.org)



**REGIONAL
STORMWATER
MANAGEMENT**