

BALDWIN CREEK RENEWAL OF CULVERTED STREAM BD00296

North Royalton, OH

ROCKY RIVER · BALDWIN CREEK

Summary

A 5' H x 7' W Corrugated Metal Pipe (CMP) about 840 LF in length and conveying Baldwin Creek through a residential neighborhood has advanced deterioration and is at risk of failure. NEORS D inspections have revealed that deterioration continues to advance, resulting in large areas of section loss and backfill washouts. CMP was initially an affordable solution for culverts in the 1970's but they only have a 20–40-year life span. This culvert was installed in the late 1970's by the property developer to reroute the stream and allow for construction of homes, and as such is approaching 50 years old. This project will repair a critical stormwater conveyance asset whose useful life has expired and is in need of significant repair.

Project Details

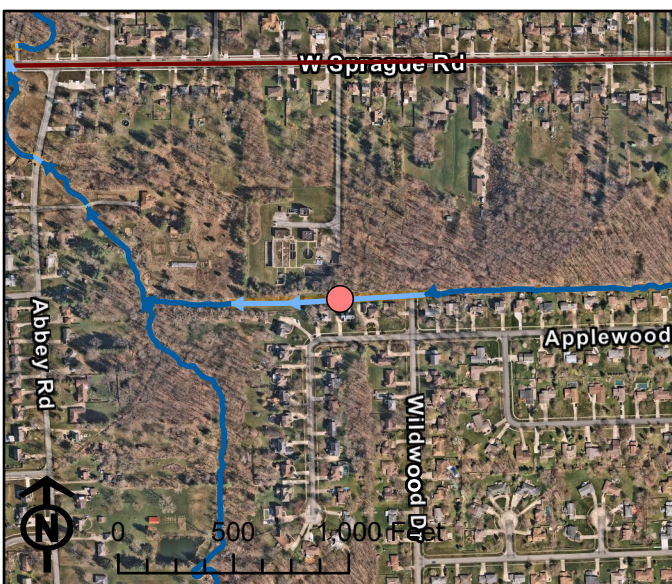
Asset ID(s): BD00296

Contract Type: Design/Bid/Build

Construction Cost: \$682,370.00

Anticipated Construction NTP: 4th QTR 2025

Watershed Team Leader: Nicole Velez (velezn@neorsd.org)



**REGIONAL
STORMWATER
MANAGEMENT**